

Bell Housings



Petrol Engines

Petrol Engine Bell Housings

Stock Code	Pump Type	HP	Engine Spigot	Bolt Circle
G10102444	F17 4 Bolt	3 - 6.5	Male 41.3 mm	92 mm
G11108469	SAE A 2 Bolt	3 - 6.5	Male 41.3 mm	92 mm
GM33238	Group 1 4B	3 - 6.5	Male 41.3 mm	92 mm
GM33240	Group 1.5	3 - 6.5	Male 41.3 mm	92 mm
GM33242	Group 2	3 - 6.5	Male 41.3 mm	92 mm
GM33246	Group 2 Bosch	3 - 6.5	Male 41.3 mm	92 mm

ENGINE MOUNT SELECTION CHART "G" SERIES

Frame Number	Pump Flange	Engine Data		
		Bolt Circle 3-5/8" Pilot Diameter (none) 1.780 Clearance Diameter	Bolt Circle 3-5/8" Pilot Diameter 1.625	Bolt Circle 6-1/2" Pilot Diameter 5.750
<p>Mount Basic Data Access Cover AC10 (1 Required) Maximum Coupling Diameter 2-1/2" Approximate Weight 1 lb. 3 oz.</p>				
10	4F17	-101	-102	
<p>Mount Basic Data Access Cover AC11 (1 Required) Maximum Coupling Diameter 2-1/2" Approximate Weight 1 lb. 6 oz. Standard Lengths 4.44 SAE AA 2 Bolt 4.69 SAE A 2 Bolt</p>				
11	SAE AA 2 Bolt	-105	-106	
	SAE A 2 Bolt	-107	-108	

DASH NUMBER FOR: ENGINE MOUNTS FOR METRIC PUMPS "GM" SERIES

Frame 33		Pump Flange Dimensions				
Mount Basic Data Access Cover A33 (1 Required) Maximum Coupling Diameter 2-3/4" Approximate Weight 1 lb. 5 oz.						
1	-237	-238				
2	-239	-240				
3	-241	-242				
4	-243	-244				
5	-245	-246				
6	-247	-248				
Order Code	A	B	C	D	E	
1	26.5 1.04"	72 2.83"	52.4 2.08"	25.4 1.0"	M6	
2	24.5 0.96"	73 2.87"	56 2.20"	30 1.18"	M6	
3	32.2 1.27"	96.2 3.78"	71.5 2.81"	36.5 1.43"	M8	
4	14.3 0.56"	60.4 2.38"	60 2.36"	50 1.97"	M8	
5	34.5 1.36"	100 3.94"	72 2.83"	80 3.15"	M8	
6	32.2 1.27"	46.2 3.78"	71.5 2.81"	36.5 1.43"	M8	

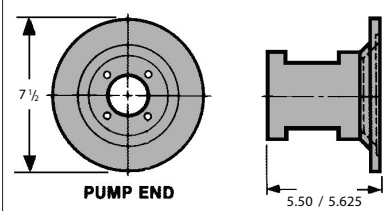
Bell Housings



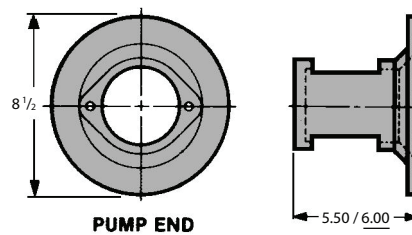
Petrol Engines

Petrol Engine Bell Housings

Stock Code	Pump Type	HP	Engine Spigot	Bolt Circle
G15118562	SAE AA 2	9 - 18	Female 146 mm	165.1 mm
G16135600	SAE A 2	9 - 18	Female 177.8 mm	196.8 mm
G16136600	SAE A 2	9 - 18	Female 177.8 mm	196.8 mm
G16137600	SAE A 2	9 - 18	Female 177.8 mm	196.8 mm
G16138600	SAE A 2	9 - 18	Female 163.5 mm	196.8 mm
G16139600	SAE A 2	9 - 18	Female 163.5 mm	196.8 mm
G16140600	SAE A 2	9 - 18	Female 163.5 mm	196.8 mm



Mount Basic Data
Access Cover AC15
(2 Required)
Maximum Coupling
Diameter 3"
Approximate Weight
3 lb. 1 oz.



Mount Basic Data
Access Cover AC16
(2 Required)
Maximum Coupling
Diameter 3-1/4"
Approximate Weight
4 lb. 5 oz.
Available with no
cover openings

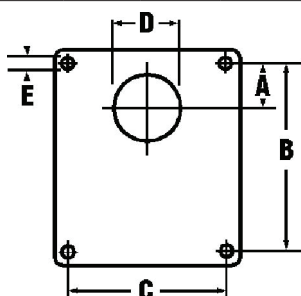
15	4F17*	-117
	SAE AA 2 Bolt	-118

16	4F17*	-122	-123	-124	-125	-126
	SAE AA 2 Bolt	-129	-130	-131	-132	-133
	SAE A 2 Bolt	-136	-137	-138	-139	-140

Petrol Engine Bell Housings

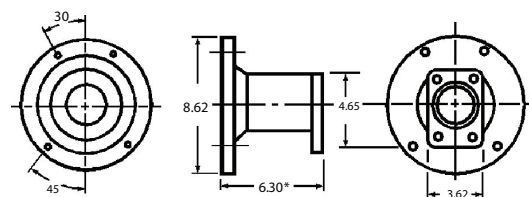
Stock Code	Pump Type	HP	Engine Spigot	Bolt Circle
GM35279	Group 1	9 - 25	Female 146 mm	165.1 mm
GM35289	Group 2	9 - 25	Female 146 mm	165.1 mm
GM35293	Group 2	9 - 25	Female 177.8 mm	196.8 mm

Pump Flange Dimensions					
Order Code	A	B	C	D	E
1	26.5 1.04"	72 2.83"	52.4 2.08"	25.4 1.0"	M6
2	24.5 0.96"	73 2.87"	56 2.20"	30 1.18"	M6
3	32.2 1.27"	96.2 3.78"	71.5 2.81"	36.5 1.43"	M8
4	14.3 0.56"	60.4 2.38"	60 2.36"	50 1.97"	M8
5	34.5 1.36"	100 3.94"	72 2.83"	80 3.15"	M8
6	32.2 1.27"	46.2 3.78"	71.5 2.81"	36.5 1.43"	M8



Frame 35

Mount Basic Data
Access Cover AC35
(2 Required)
Maximum Coupling
Diameter 3-1/8"
Approximate Weight
3 lb. 10 oz.
*Available in 5.43
Length



1	-279	-280	-281	-282	-283
2	-284	-285	-286	-287	-288
3	-289	-290	-291	-292	-293
4	-294	-295	-296	-297	-298
5	-299	-300	-301	-302	-303
6	-304	-305	-306	-307	-308

Metric Pump Mount Part Number Order Code:
(Example: GM 34 - 250)

— Dash Number
— Frame Number
— Gas Engine / Metric Pump Flange

Length code at end of part number is deleted
since length is not an option for frame number 33-35.

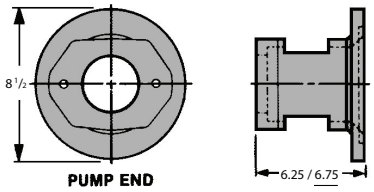
Bell Housings



Petrol Engines

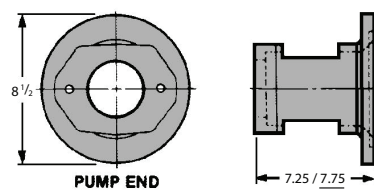
Petrol Engine Bell Housings

Stock Code	Pump Type	HP	Engine Spigot	Bolt Circle
G18149675	SAE A 2	9 - 18	Female 177.8 mm	196.8 mm
G18156675	SAE B 2	9 - 18	Female 177.8 mm	196.8 mm
G19170725	SAE A 2	9 - 25	Female 177.8 mm	196.8 mm
G22211675	SAE A 2	9 - 25	Female 200 mm	219.07 mm
G22212675	SAE B 2	9 - 25	Female 200 mm	219.07 mm
G24218925	SAE A 2	9 - 25	Female 219.07 mm	234.95 mm
G24219925	SAE A 2	9 - 25	Female 209.55 mm	234.95 mm
G24221925	SAE B 2	9 - 25	Female 200.92 mm	234.95 mm
G24222925	SAE B 2	9 - 25	Female 209.55 mm	234.95 mm



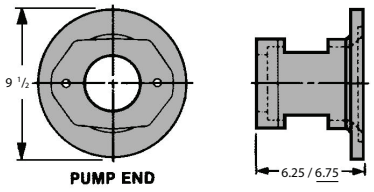
Mount Basic Data
 Access Cover AC18 (2 Required)
 Maximum Coupling Diameter 3-7/8"
 Approximate Weight 7 lb. 8 oz.
 SAE A 4 Bolt Available

18	SAE A 2 Bolt	-148	-149	-150	-151	-152	-153	-154
	SAE B 2 Bolt	-155	-156	-157	-158	-159	-160	-161
	SAE B 4 Bolt	-162	-163	-164	-165	-166	-167	-168



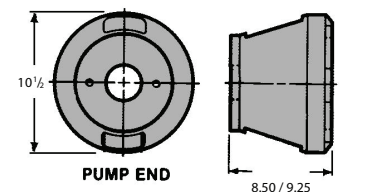
Mount Basic Data
 Access Cover AC19 (2 Required)
 Maximum Coupling Diameter 3-7/8"
 Approximate Weight 8 lb.
 SAE A 4 Bolt Available

19	SAE A 2 Bolt	-169	-170	-171	-172	-173	-174	-175
----	--------------	------	------	------	------	------	------	------



Mount Basic Data
 Access Cover AC22 (2 Required)
 Maximum Coupling Diameter 3-7/8"
 Approximate Weight 8 lb. 3 oz.
 SAE A 4 Bolt Available

22	SAE A 2 Bolt	-211
	SAE B 2 Bolt	-212



Mount Basic Data
 Access Cover AC24 (2 Required)
 Maximum Coupling Diameter 7"
 Approximate Weight 16 lb. 7 oz.
 SAE A 4 Bolt Available

24	SAE A 2 Bolt	-217	-218	-219
	SAE B 2 Bolt	-220	-221	-222
	SAE B 4 Bolt	-223	-224	-225