

Bell Housings



Standard European Group Pumps 1 : 8 Taper

Features



- L & LSE series bell housings are made of cast aluminium alloy. They are supplied fully machined to accept the pumps of major producers providing automatic alignment between the pump and the electric motor.

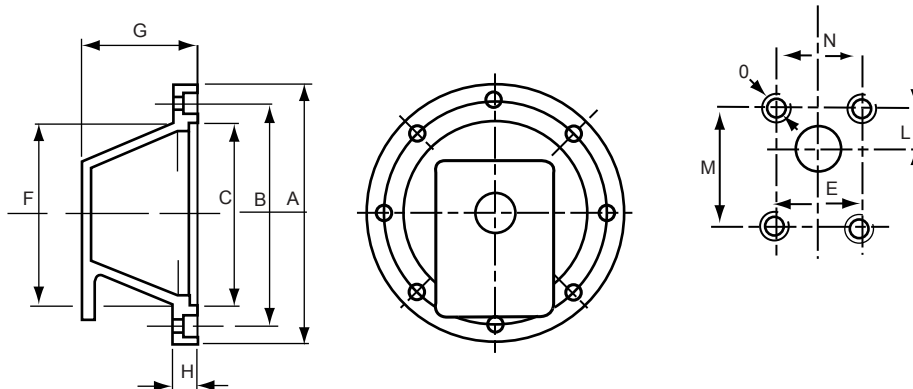
- Suitable for electric motors, metric frame D63 - D180.

- Suitable for pumps European Group 1, Group 2 and Group 3, 4 bolt standard European mount.

- Note: LSE series bell housings are supplied dual machined and adapted to accept two adjacent group size pumps i.e. Group 1 & 2 or Group 2 & 3.

Dimensional Details

Motor Frame	European Pump Mount	A	B	C	F	G	H	E	L	M	N	P	Bell Housing Stock Code
D63	Group 0.5	140	115	95	100	60	11	22	25.5	66	-	M6	L1401
D63	Group 1	140	115	95	100	60	11	25.4	26.2	72	52	M6	L1402
D71	Group 0.5	160	130	110	110	70	14	22	25.5	66	-	M6	L1601
D71	Group 1	160	130	110	110	70	14	25.4	26.2	72	52	M6	L1602
D80	Group 0.5	200	165	130	135	95	15	22	25.5	66	-	M6	L2101
D80/90	Group 1	200	165	130	135	95	15	25.4	26.5	72	52	M6	LSE20BDF1
	Group 1 & 2 Group 2							36.5	32.5	96	71.5	M8	
D100/112	Group 1	250	215	180	185	105	21	25.4	26.5	72	52	M6	LSE25ADF1
	Group 1 & 2 Group 2							36.5	32.5	96	71.5	M8	
D100/112	Group 2 & 3 Group 3	250	215	180	185	105	21	50.8	42	128	98.5	M10	LSE25BDF1
D132	Group 2	300	265	230	235	143	21	36.5	32.5	96	71.5	M8	LSE30ADF4
	Group 2 & 3 Group 3							50.8	42	128	98.5	M10	
D160/180	Group 2 Group 2 & 3 Group 3	350	300	250	253	178	25	36.5	32.5	96	71.5	M8	LS35CDF4
								50.8	42	128	98.5	M10	

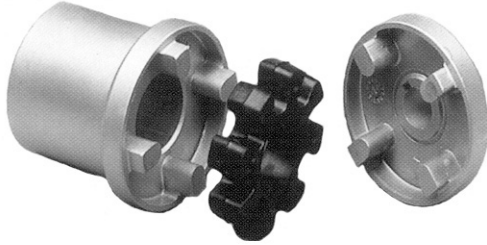


Drive Couplings

Standard European Group Pumps 1 : 8 Taper



Features

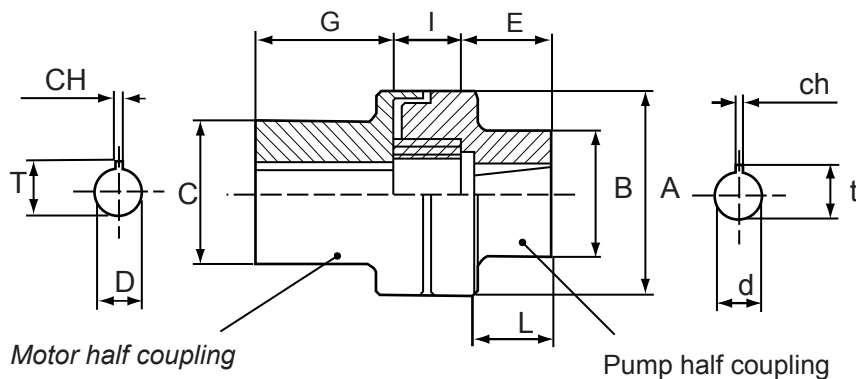


- ND & NS flexible couplings are manufactured from aluminium alloy with an oil proof rubber element providing silent operation and a long life.

- Permissible torque transmission should be calculated from the table shown on the Bell Housings/Couplings General Information page.

Dimensional Details

Motor Coupling Half					Pump Coupling Half								
Stock Code	A	C	G	D	Stock Code	A	B	E	I	d	ch1	ch2	Notes
ND48A	48	30	19	11	ND48P05GT	48	30	19	8	7	2	-	Parallel
ND48B	48	30	29	14	ND48PU1P	48	30	17	10.5	9.7	2.4	-	1:8 Taper
ND48C	48	38	54	19									
ND48D	48	38	54	24									
ND65A	65	42	47.5	19	ND65P2	65	34	21.5	18.5	17.2	4	3.2	1:8 Taper
ND65B	65	48	47.5	24									
ND65C	65	53	57.5	28									
ND65D	65	42	47.5	24									
ND86A	86	55	60	28	ND86P2	86	48	27	18.5	17.2	4	3.2	1:8 Taper
ND86B	86	73	88	38	ND86P3U	86	48	27	23.6	22.2	4	-	1:8 Taper
NS86BD51	86	72	88	42									
ND108B	108	84	110	42	ND108P2	108	64	34	18.5	17.2	4	3.2	1:8 Taper
ND108C	108	100	110	48	ND108P3U	108	64	34	23.6	22.2	4	-	1:8 Taper



Recommended Assemblies



Standard European Group Pumps 1 : 8 Taper

Motor Frame Size	Pump Group Size	Bell Housing	Motor Coupling Half	Rubber Spider	Pump Coupling Half
D63	GROUP 0.5	L1402	ND48A	R42	ND48P05GT
D63	GROUP 1	L1402	ND48A	R42	ND48PU1P
D71	GROUP 0.5	L1601	ND48B	R42	ND48P05GT
D71	GROUP 1	L1602	ND48B	R42	ND48PU1P
D80	GROUP 0.5	L2001	ND48C	R42	ND48P05GT
D80	GROUP 1	LSE20BDF1	ND48C	R42	ND48PU1P
D80	GROUP 2	LSE20BDF1	ND65A	R62	ND65P2
D90	GROUP 1	LSE20BDF1	ND65B	R62	ND65PU1P
D90	GROUP 2	LSE20BDF1	ND65D	R62	ND65P2
D100/112	GROUP 1	LSE25ADF1	ND65C	R62	ND65PU1P
D100/112	GROUP 2	LSE25ADF1	ND65C	R62	ND65P2
D100/112	GROUP 3	LSE25ADF1	ND86A	R82	ND86P3U
D132	GROUP 2	LSE30ADF4	ND86B	R82	ND86P2
D132	GROUP 3	LSE30ADF4	ND86B	R82	ND86P3U
D160	GROUP 2	L35CDF1	ND108B	R103	ND108P2
D160	GROUP 3	L35CDF1	ND108B	R103	ND108PU
D180	GROUP 2	L35CDF1	ND108C	R103	ND108P2
D180	GROUP 3	L35CDF1	ND108C	R103	ND108PU