

RCF Series

Hydraulic Remote Controls



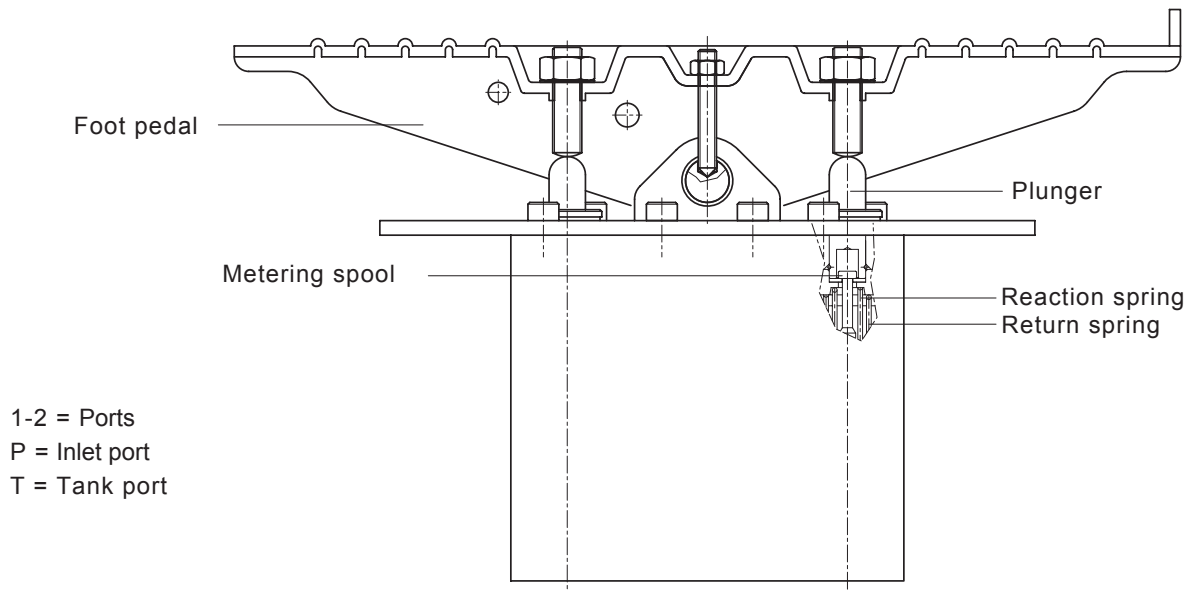
Foot pedal 2 service ports with low rear parts

The hydraulic remote control RCF is capable of working with a maximum input pressure of 100 bar at a maximum oil input capacity of 16 l/min.

Operating principle

The hydraulic remote control RCF works according to the principle of direct-acting pressure reducing valves. In rest position, the foot pedal is held in neutral by the return spring; inlet port P is closed and ports are connected to tank port T. By selecting foot pedal, plunger compresses return spring and reaction spring; consequently it shifts the spool and opens the connection holes between inlet port P and service ports.

This causes a pressure increase on service ports that is proportional to the foot pedal stroke and the reaction spring.



Standard Working Conditions	
Maximum input pressure	1450 psi
Maximum back pressure on tank line	44 psi
Oil input capacity	4.2 gpm
Hysteresis	7.25 psi
Hydraulic fluid	Mineral oil
Fluid temperature range	-20°C - +80°C
Fluid viscosity range	10÷300 Cst
Recommended filtration	25 µ Absolute
Recommended operating pipes	8mm rigid, 1/4" BSP flexible
Leakage	3 cc/min (50 bar)
Technical Specifications	
Body	Cast iron
Surface coating	Zinc plated
Plunger	Stainless steel
Plunger guide	Brass

RCF Series

Hydraulic Remote Controls



How to Order

HC-RCF:

Product type

01S

A

A01

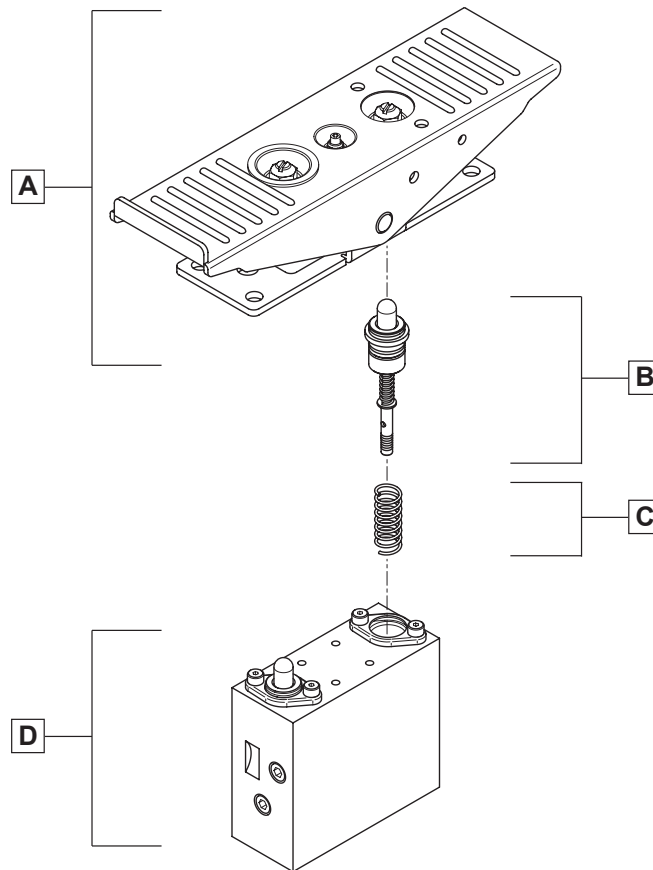
B

MA

C

RA G02

D



A CONTROL

01S = control type

C RETURN SPRING

MA = return spring type

B METERING CURVE

A01 = curve type

D BODY ARRANGEMENT

RA = body specification

G02 = threads

NOTE: ordering row B and C, must be repeated for each port

RCF Series

Hydraulic Remote Controls



Controls

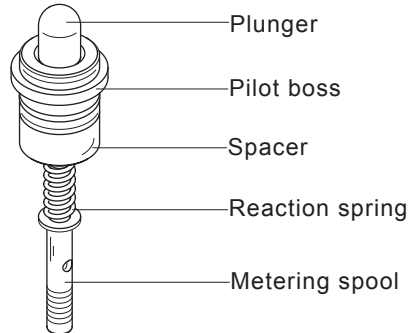
CODE	DIAGRAM	OVERALL DIMENSIONS	DESCRIPTION
01S			Foot pedal with return spring in neutral position (standard)
02S			Foot pedal with prearranged handle and return spring in neutral position
03S			Foot pedal with adjustable angle and prearranged handle with return spring in neutral position
04S			Foot pedal with adjustable angle and return spring in neutral position (standard)

RCF Series

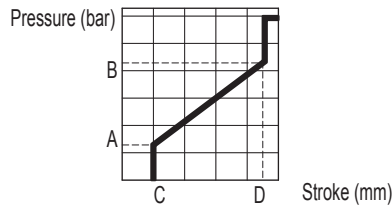
Hydraulic Remote Controls



Metering curve



DIAGRAM



DESCRIPTION

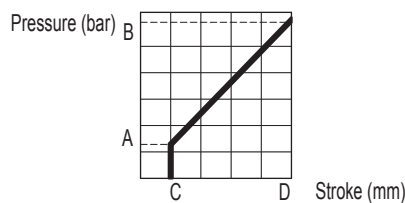
Linear metering curve with step

**CURVE
A**

CODE	A01	A02	A03	A04	A05	A06	A07	A08	A09	A10	A11	A12	A13	A14	A15	A16	A17	A18	A19	A20	
PRESSURE	A	5,8	5	2	6	0	4	5	2	5	2	4	11,5	10	7	7,5	6	0	4	6	8
	B	19,5	25	13	40	4	17	15	18	20	8	10	32	20	17	29	22	20	16	20,6	28
STROKE	C	1,5	1,5	1,5	1,5	1,5	1,5	1,5	1,5	1,5	1,5	1,5	1,5	1,5	1,5	1,5	1,5	1	1,5	1,5	1,5
	D	7,5	7,5	7,5	7,5	7,5	7,5	7,5	7,5	6	7,5	7,5	7,5	7,5	7,5	7,5	7,5	7,5	7	7	7,5

CODE	A21	A22	A23	A24	A25	A26	A27	A28	A29	A30	A31	A32	A33	A34	A35	A36					
PRESSURE	A	5	5,8	6,8	5,8	4,5	2,8	8	3	8	5,8	5,7	7	10,8	0	5,8	7,4				
	B	20,5	18,3	23,5	19,2	14,5	20,8	34	16,2	27,6	15,5	25,7	15,5	27,5	28	24	21				
STROKE	C	1,5	1,5	1	1,5	1	1,5	1,5	1,5	1,5	1,5	1,5	1,2	1	1,5	1,5	1,5				
	D	8	8	7,5	9,5	5	10	7,5	7,5	10	7,5	7,5	7,5	7,5	7,5	9,5	7,5				

DIAGRAM



DESCRIPTION

Linear metering curve without step

**CURVE
B**

CODE	B01	B02	B03	B04	B05	B06	B07	B08	B09	B10	B11	B12	B13	B14	B15	B16					
PRESSURE	A	5	5	5	2	7,5	5	4	3	6	2	7,2	8,3	8	6	10,4	6,5				
	B	22	19	16	16,5	32,5	20	10,5	14,5	24,3	19,3	21,3	22,4	22,8	23	25,5	12				
STROKE	C	1,5	1,5	1,5	1,5	1	1	1,5	1,5	1	1,5	1	1	1	1,5	1	1				
	D	8	8	8	8	8	8	8	8	8	8	7,5	7,5	7,5	8	7,5	8				

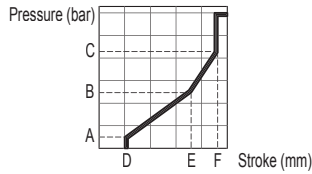
RCF Series

Hydraulic Remote Controls



Metering curve

DIAGRAM



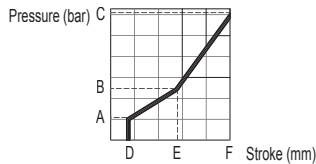
CODE		C01	C02	C03	C04
PRESSURE	A	2	3	7	7
	B	6	7	18	18
	C	15	16	27	27
STROKE	D	1,5	1,5	0,5	0,5
	E	5	5	4,8	6,3
	F	7,5	7,5	6,5	8

DESCRIPTION

Broke line metering curve with step

**CURVE
C**

DIAGRAM



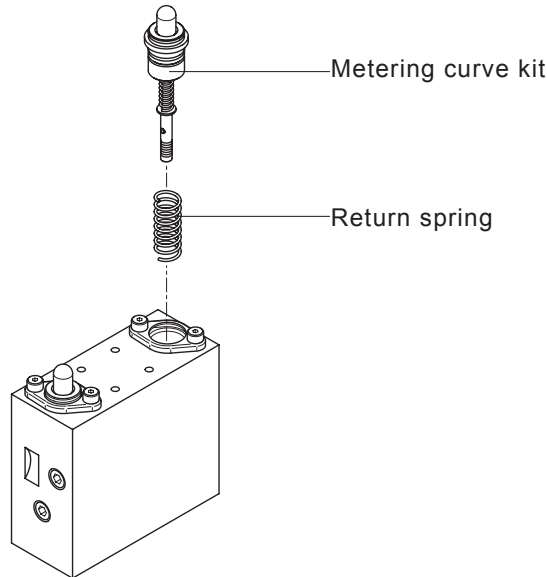
CODE		D01			
PRESSURE	A	2			
	B	6			
	C	15			
STROKE	D	1,5			
	E	5			
	F	8			

DESCRIPTION

Broke line metering curve without step

**CURVE
D**

Return spring



CODE	MA	MB	MC	MD
Preload	29,5 N	14,6 N	73,5 N	98 N
	3 kgf	1,4 kgf	7,5 kgf	10 kgf
End stroke load	44 N	29,4 N	135,5 N	186 N
	4,5 kgf	2,8 kgf	13,8 kgf	19 kgf

RCF Series

Hydraulic Remote Controls

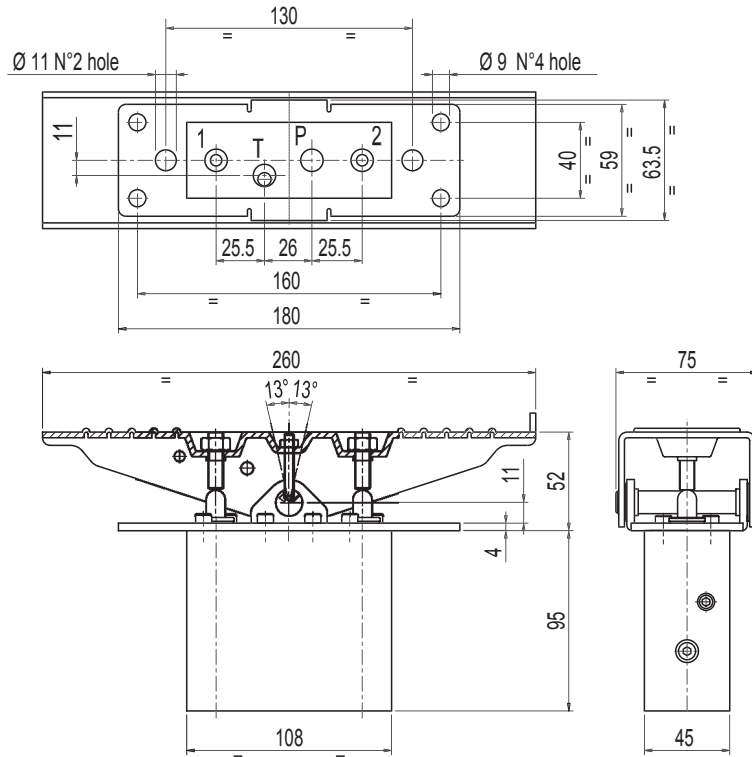


Body Arrangement and Dimensions

HYDRAULIC DIAGRAM

CODE	DESCRIPTION	SERVICE	CODE
RA	Standard body	1/4" BSP	G02
		9/16".18 UNF	U02

Dimensional drawing:



Weight	4,1 Kg
---------------	---------------