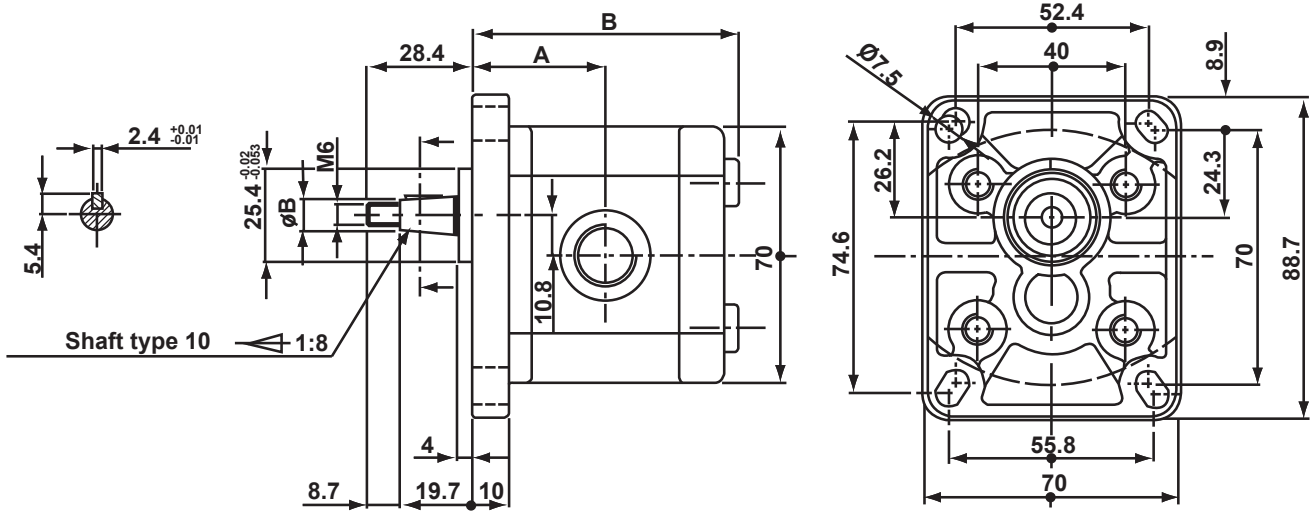


1SMA Series

Reversible Gear Motors



DIMENSIONAL DETAILS



Stock No.	Displacement cc/rev	Port Size		Dimension mm		Max. Speed RPM	Max. Pressure Bar		Weight Kg
		Inlet	Outlet	A	B		P1	P2	
1SMA25RK10GG	2.5	3/8" BSPP	3/8" BSPP	38	80	4000	180	200	2
1SMA32RK10GG	3.2			39	80	4000	180	200	2
1SMA37RK10GG	3.7			40	84	4000	170	190	2
1SMA42RK10GG	4.2			41	85	3500	170	190	2

Reversible motors have a 1/4" BSPP case drain port. This allows 2 or more motors to be connected in series. It is not possible to plug case drain even if you use the motor in one direction. Maximum back pressure on case drain is 30 bar.

Avoid axial and radial loads on the shafts.

P1 = Continuous Operating Pressure
P2 = Intermittent Operating Pressure