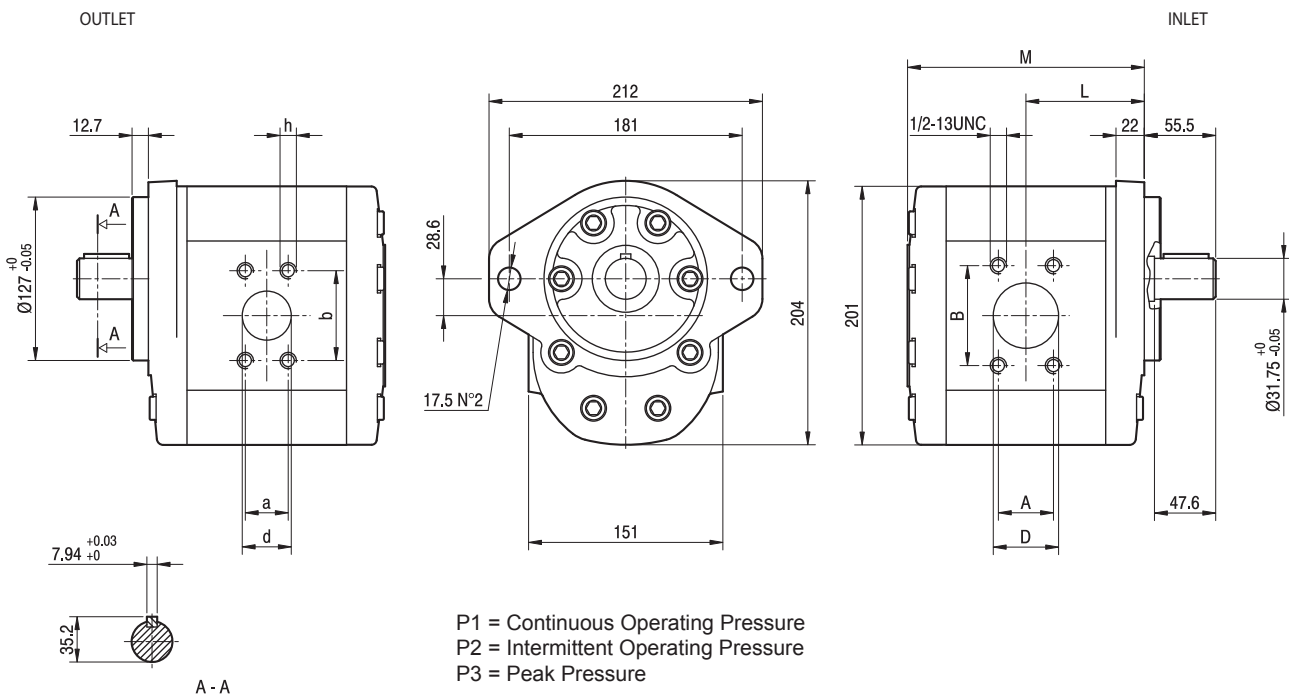


DIMENSIONAL DETAILS

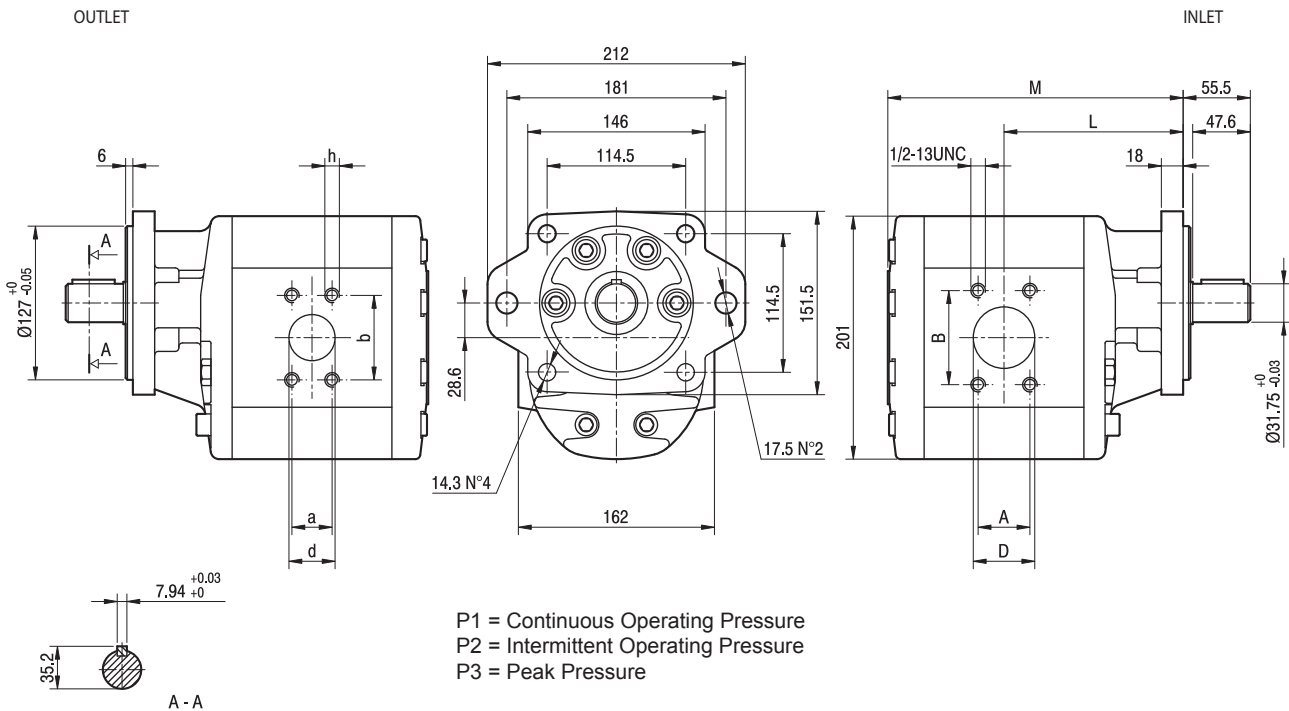
TYPE	DISPLACEMENT CM ³ /REV	FLOW AT 1500 REV/MIN	MAX. WORKING PRESSURE			MAX. SPEED RPM
			P1	P2	P3	
ALP4ED130	87	124	240	260	280	2800
ALP4ED160	106	151	200	220	240	2300
ALP4ED190	128	182	180	200	220	2500
ALP4ED220	147	209	170	190	210	2200
ALP4ED250	166	237	160	170	190	2000
ALP4ED270	181	258	140	150	170	2400
ALP4ED300	200	285	130	140	150	2400



TYPE	DIMENSIONS mm								
	L	M	A	B	D	a	b	d	h UNC
ALP4ED130	92	184	35.7	69.8	38	30.2	58.7	31.5	7/16
ALP4ED160	96	192	42.8	77.7	51	35.7	69.8	38	1/2
ALP4ED190	100.5	201	42.8	77.7	51	35.7	69.8	38	1/2
ALP4ED220	104.5	209	42.8	77.7	51	35.7	69.8	38	1/2
ALP4ED250	108.5	217	42.8	77.7	51	35.7	69.8	38	1/2
ALP4ED270	111.5	223	42.8	77.7	51	35.7	69.8	38	1/2
ALP4ED300	115.5	231	42.8	77.7	51	35.7	69.8	38	1/2

DIMENSIONAL DETAILS

TYPE	DISPLACEMENT CM ³ /REV	FLOW AT 1500 REV/MIN	MAX. WORKING PRESSURE			MAX. SPEED RPM
			P1	P2	P3	
ALP4AD130	87	124	240	260	280	2800
ALP4AD160	106	151	200	220	240	2300
ALP4AD190	128	182	180	200	220	2500
ALP4AD220	147	209	170	190	210	2200
ALP4AD250	166	237	160	170	190	2000
ALP4AD270	181	258	140	150	170	2400
ALP4AD300	200	285	130	140	150	2400

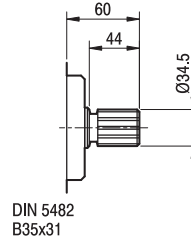
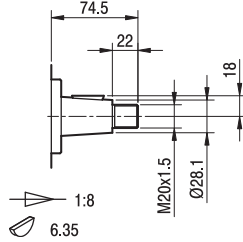
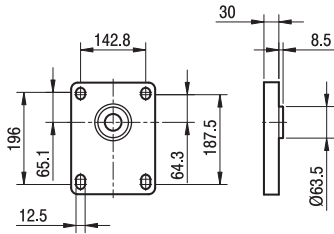


TYPE	DIMENSIONS mm								
	L	M	A	B	D	a	b	d	h UNC
ALP4AD130	144	236	35.7	69.8	38	30.2	58.7	31.5	7/16
ALP4AD160	148	244	42.8	77.7	51	35.7	69.8	38	1/2
ALP4AD190	152.5	253	42.8	77.7	51	35.7	69.8	38	1/2
ALP4AD220	156.5	261	42.8	77.7	51	35.7	69.8	38	1/2
ALP4AD250	160.5	269	42.8	77.7	51	35.7	69.8	38	1/2
ALP4AD270	163.5	275	42.8	77.7	51	35.7	69.8	38	1/2
ALP4AD300	167.5	283	42.8	77.7	51	35.7	69.8	38	1/2

FLANGE & SHAFT DETAILS

FLANGES

SHAFTS

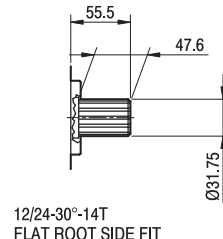
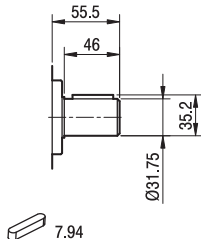
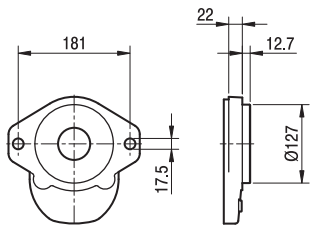


T0

S0

Max Torque 550 Nm

Max Torque 1500 Nm



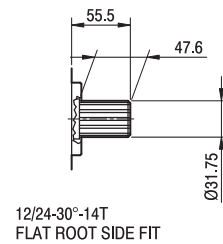
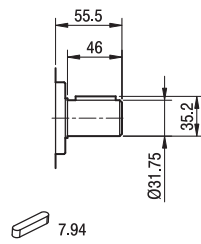
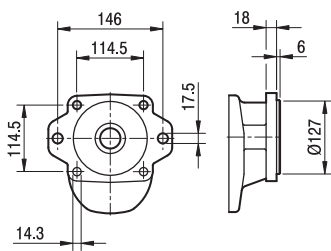
E

C0

S1

Max Torque 450 Nm

Max Torque 900 Nm



A

C0

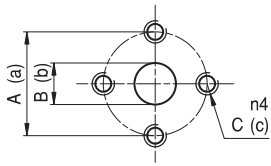
S1

Max Torque 450 Nm

Max Torque 900 Nm

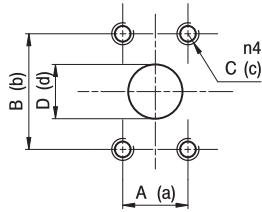
PORT DETAILS

PORTS



TYPE	INLET			OUTLET		
	A	B	C	a	b	c
ALP4 ... 130 ÷ ALP4 ... 160	62	36	M10	56	30	M10
ALP4 ... 190 ÷ ALP4 ... 250	72,5	45	M12	62	36	M10
ALP4 ... 270 ÷ ALP4 ... 300	92	56	M12	72,5	45	M12

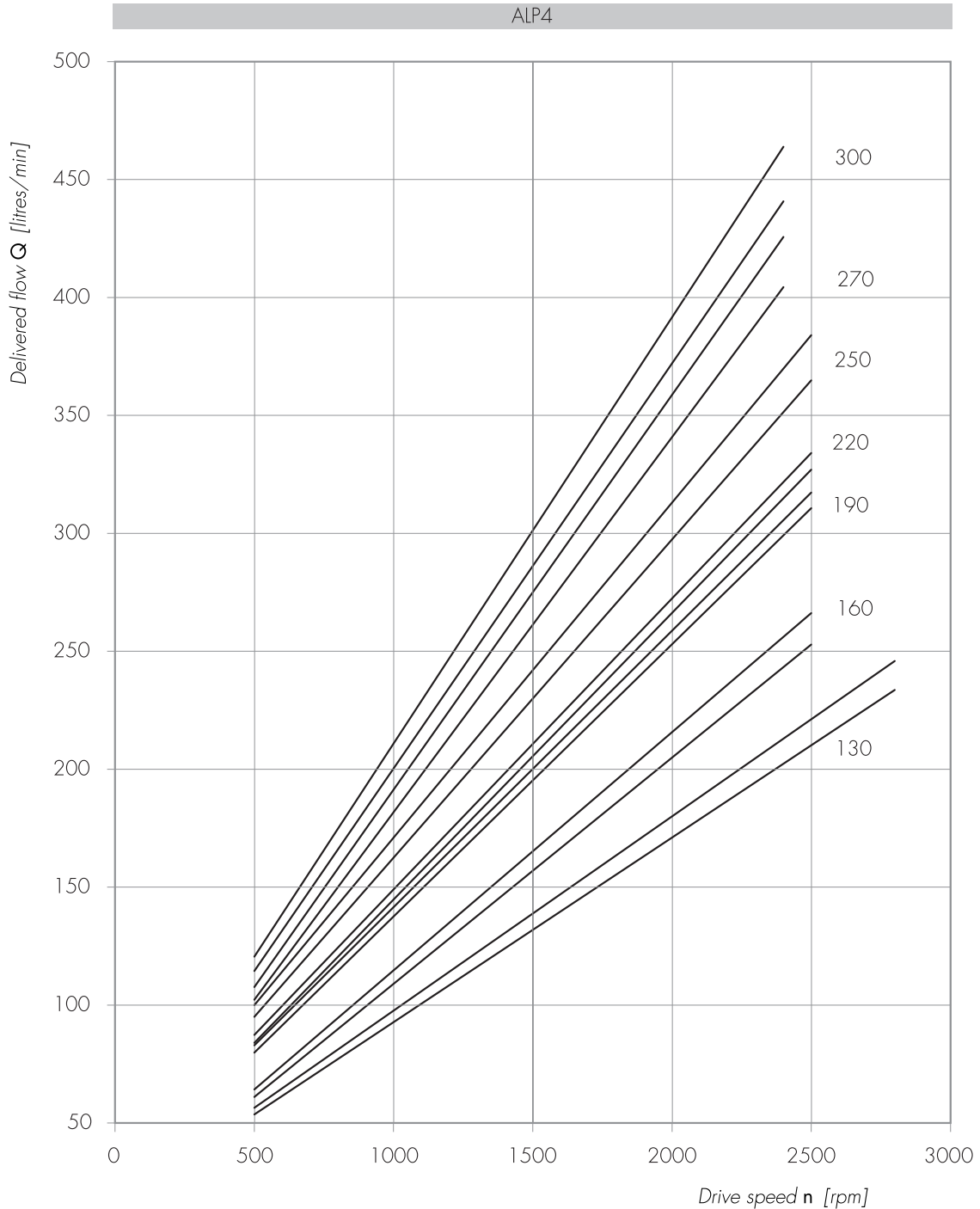
Tightening torques of the fittings screws are specified on page 57 (accessories section).



TYPE	INLET				OUTLET			
	A	B	C	D	a	b	c	d
ALP4 ... 130	35,7	69,8	1/2-13 UNC	38	30,2	58,7	7/16-14 UNC	31,5
ALP4 ... 160 ÷ ALP4 ... 300	42,8	77,7	1/2-13 UNC	51	5,7	69,8	1/2-13 UNC	38

Tightening torques of the fittings screws are specified on page 57 (accessories section).

ALP4 PERFORMANCE CURVES



Each curve has been obtained at 50°C, using oil with viscosity 30 cSt at these pressure.

130 | 50-240 bar

190 | 50-180 bar
220

270 | 50-150 bar

160 | 50-220 bar

250 | 50-170 bar

300 | 50-130 bar

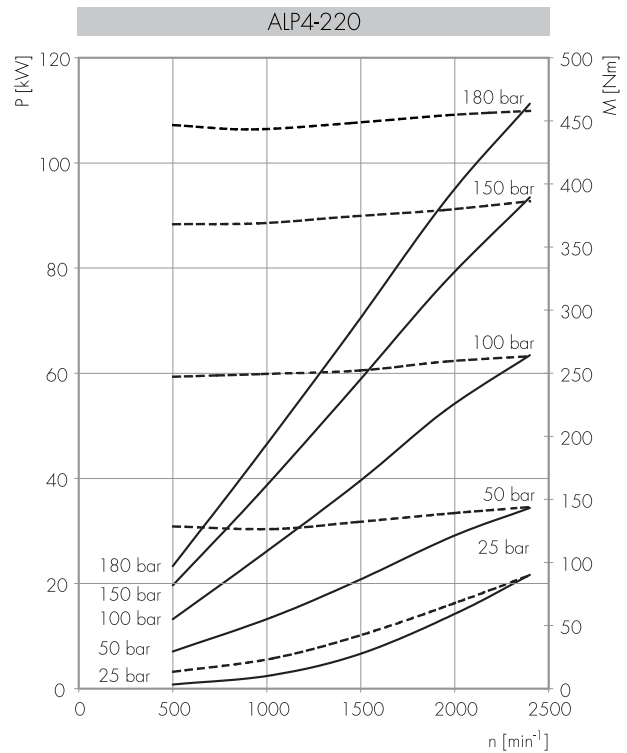
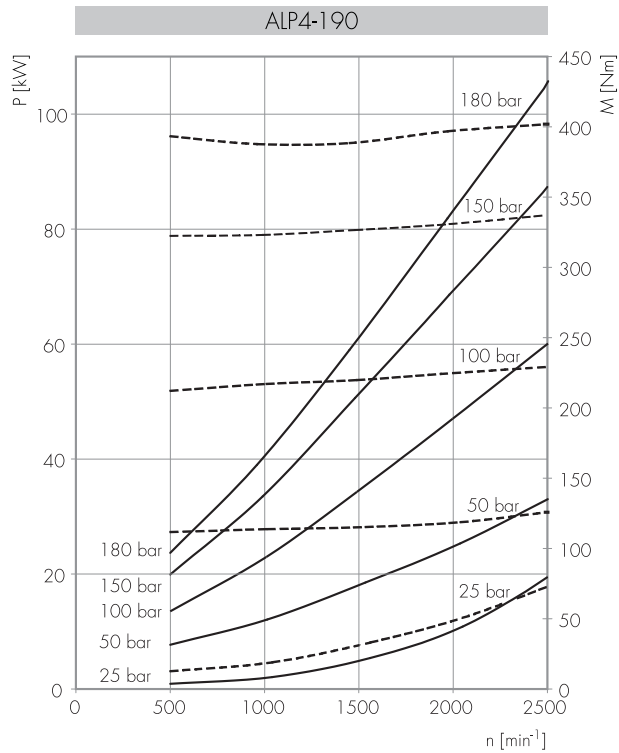
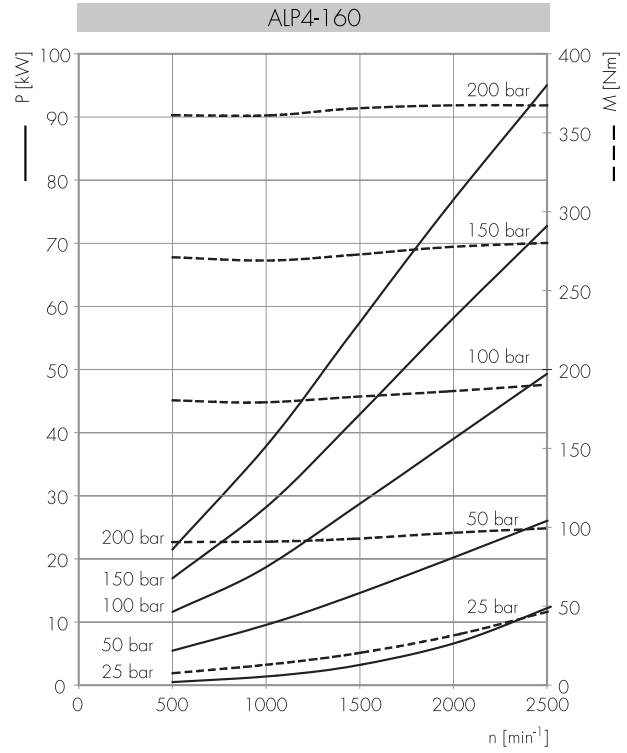
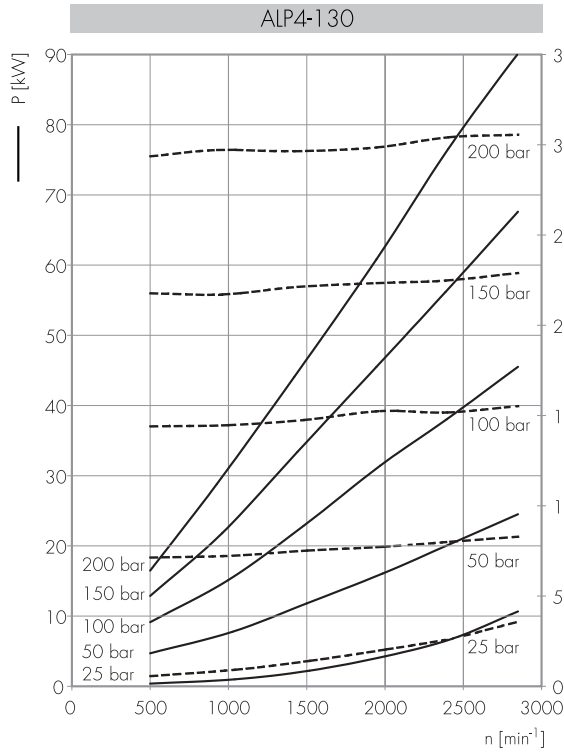
ALP4 Series



Gear Pumps

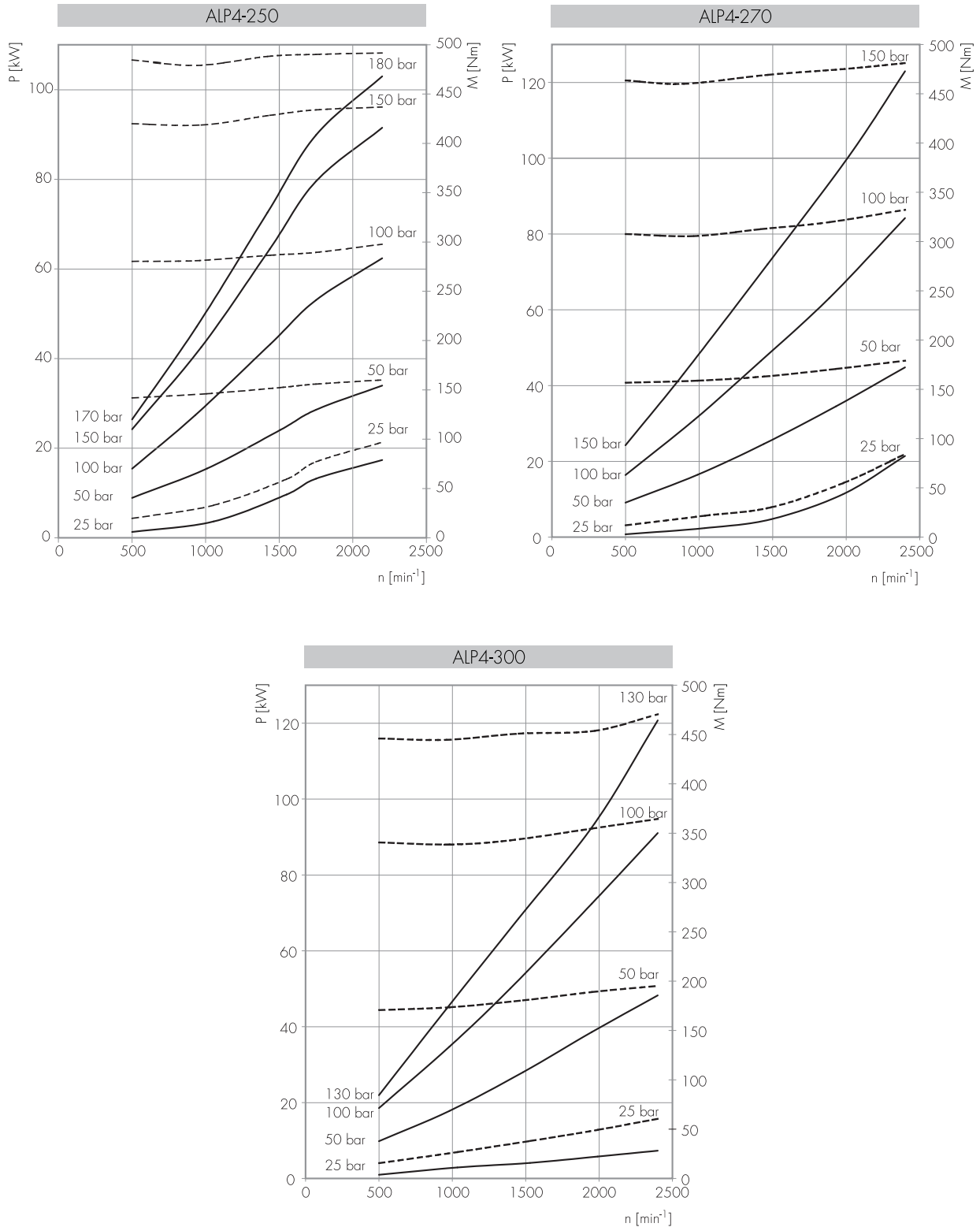
TYPICAL PERFORMANCE DATA

Delivered power P [kW]
 Delivered torque M [Nm]
 Drive speed n [rpm]



TYPICAL PERFORMANCE DATA

Delivered power P [kW]
 Delivered torque M [Nm]
 Drive speed n [rpm]

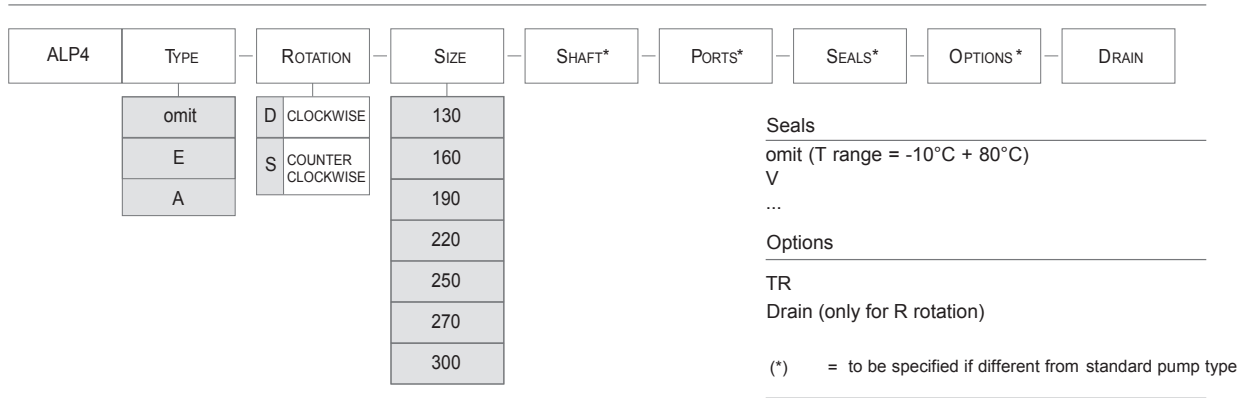


ALP4 Series

Gear Pumps



HOW TO ORDER



Pump StandardTypes

omit	=	European flange + shaft T0 + ports E + standard seal
E	=	flange E + shaft C0 + ports A + standard seal
A	=	flange A + shaft C0 + ports A + standard seal