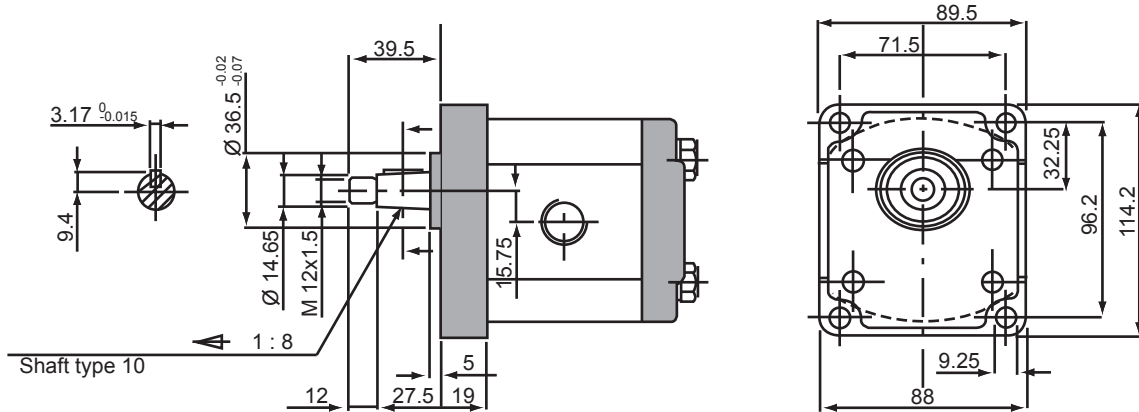


# HC 2P Series

Gear Pumps

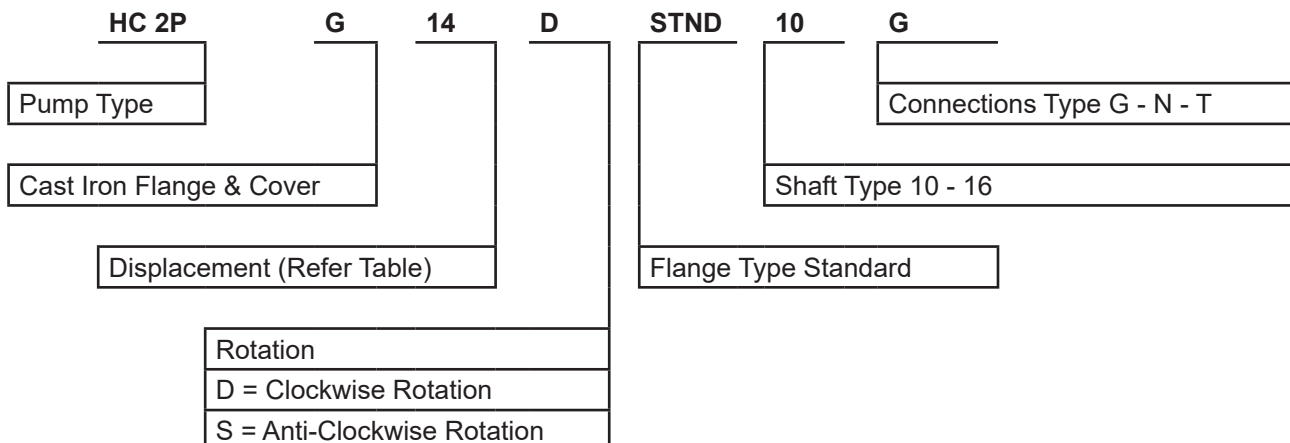


## DIMENSIONAL DETAILS



TYPE	DISPLACEMENT CM <sup>3</sup> /REV	MAX. WORKING PRESSURE BAR			MAX. SPEED RPM	DIMENSIONS		WEIGHT KG
		P1	P2	P3		A	B	
HC 2P G4	4	280	300	320	4000	44.4	93	3.40
HC 2P G6	6	280	300	320	4000	46	96.3	3.55
HC 2P G8	8.5	280	300	320	3500	48.1	100.5	3.70
HC 2P G11	11	280	300	320	3500	50.2	104.6	3.80
HC 2P G14	14	270	280	290	3500	52.7	109.6	3.90
HC 2P G16	16.5	230	240	250	3500	54.8	113.8	4.05
HC 2P G19	19.5	210	220	230	3300	57.3	118.8	4.20
HC 2P G22	22.5	190	200	210	2800	59.8	123.8	4.35
HC 2P G26	26	170	180	190	2500	62.7	129.6	4.50

## HOW TO ORDER

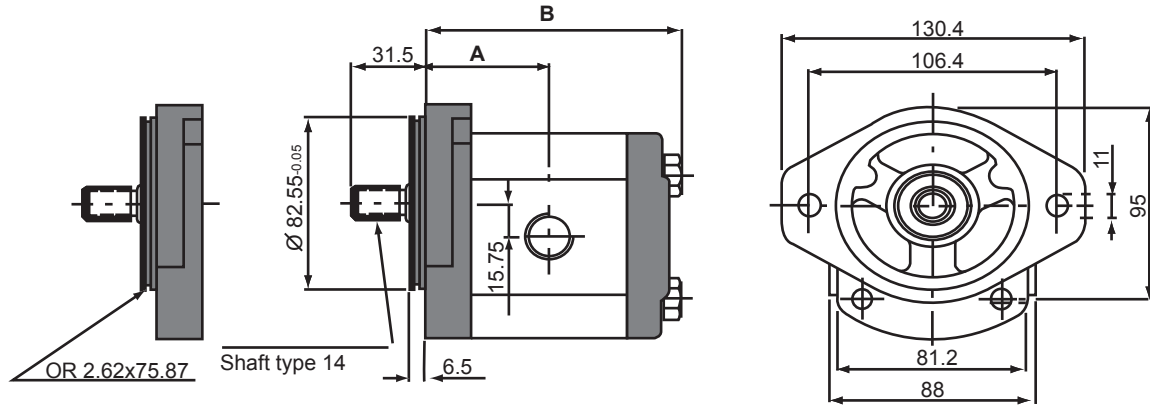


# HC 2P Series

Gear Pumps

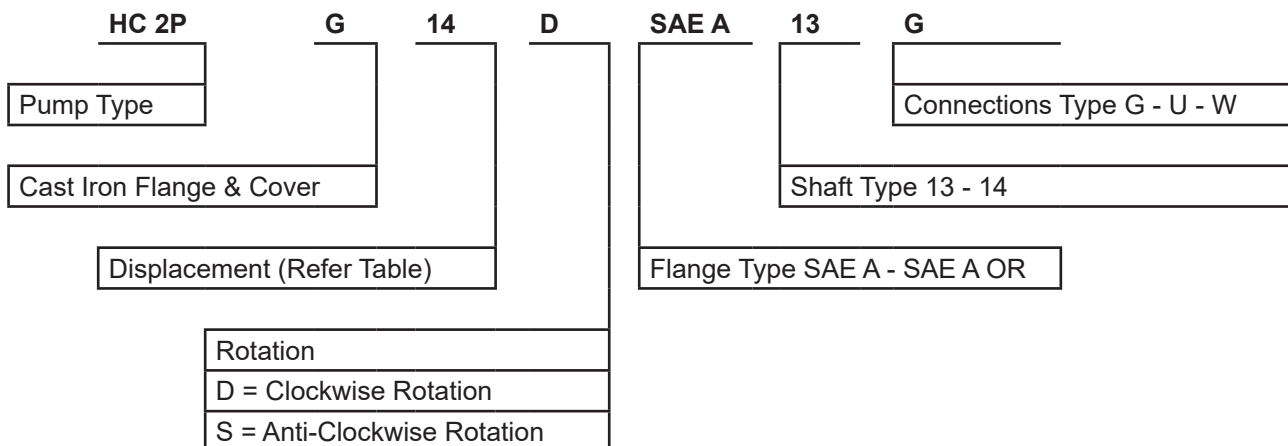


## DIMENSIONAL DETAILS



TYPE	DISPLACEMENT CM <sup>3</sup> /REV	MAX. WORKING PRESSURE BAR			MAX. SPEED RPM	DIMENSIONS		WEIGHT KG
		P1	P2	P3		A	B	
HC 2P G4	4	280	300	320	4000	44.4	93	3.40
HC 2P G6	6	280	300	320	4000	46	96.3	3.55
HC 2P G8	8.5	280	300	320	3500	48.1	100.5	3.70
HC 2P G11	11	280	300	320	3500	50.2	104.6	3.80
HC 2P G14	14	270	280	290	3500	52.7	109.6	3.90
HC 2P G16	16.5	230	240	250	3500	54.8	113.8	4.05
HC 2P G19	19.5	210	220	230	3300	57.3	118.8	4.20
HC 2P G22	22.5	190	200	210	2800	59.8	123.8	4.35
HC 2P G26	26	170	180	190	2500	62.7	129.6	4.50

## HOW TO ORDER



# HC 2P Series

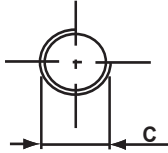
Gear Pumps



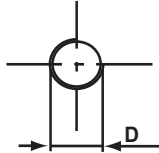
## PORTING OPTIONS

### TYPE G

SUCTION



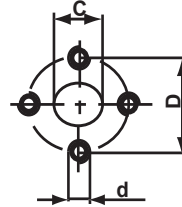
DELIVERY



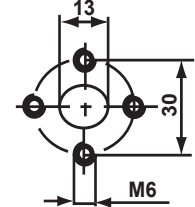
TYPE	C	D
4 - 8	G 1/2"	G 1/2"
11 - 26	G 3/4"	G 3/4"

### TYPE N

SUCTION



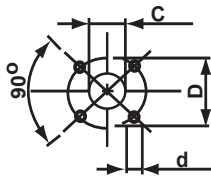
DELIVERY



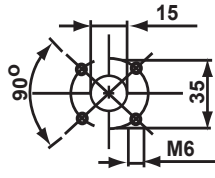
TYPE	C	D	d
4 - 8	13	30	M6
11 - 26	19	40	M8

### TYPE T

SUCTION



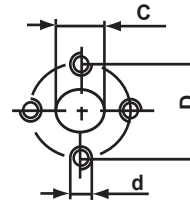
DELIVERY



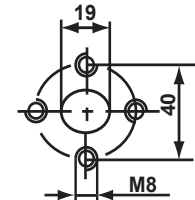
TYPE	C	D	d
4 - 8	15	40	M6
11 - 26	20	40	M6

### TYPE M

SUCTION



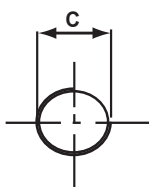
DELIVERY



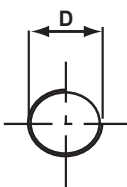
TYPE	C	D	d
11 - 26	19	40	M8

### TYPE U

SUCTION



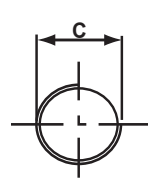
DELIVERY



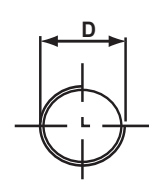
TYPE	C	D
4 - 8	7/8"-14 UNF	7/8"-14 UNF
11 - 26	1-1/16"-12 UN	7/8"-14 UNF

### TYPE W

SUCTION



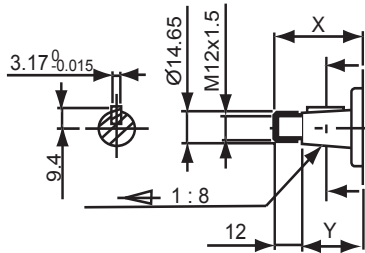
DELIVERY



TYPE	C	D
4 - 8	1-5/16"-12 UN	1-1/16"-12 UN
11 - 26	1-5/16"-12 UN	1-1/16"-12 UN

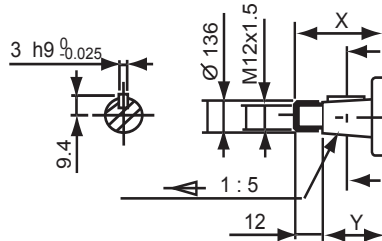
## SHAFT OPTIONS

### TYPE 10



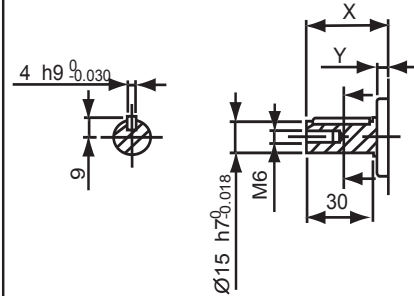
FLANGE TYPE	X	Y
STANDARD	39.5	27.5

### TYPE 11



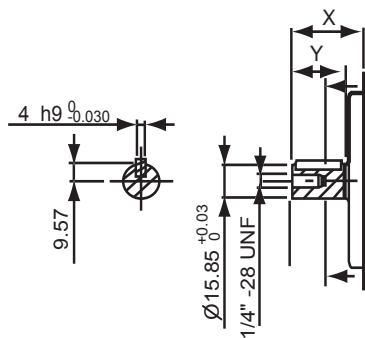
FLANGE TYPE	X	Y
B50C	39.5	27.5
B80C	37.5	25.5

### TYPE 12



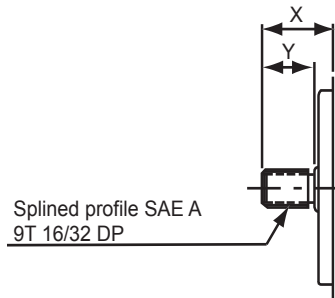
FLANGE TYPE	X	Y
B50C	36.5	7
B80C	34.5	7.2

### TYPE 13



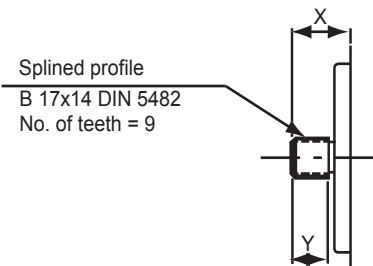
FLANGE TYPE	X	Y
SAE A	32	24

### TYPE 14



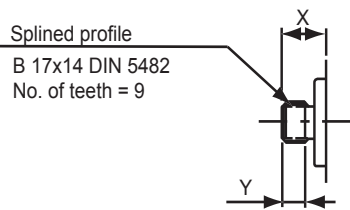
FLANGE TYPE	X	Y
SAE A	31.5	23

### TYPE 15



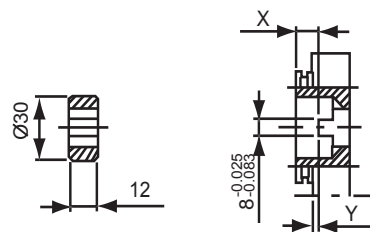
FLANGE TYPE	X	Y
B50C	25.5	16
B80C	23.5	16

### TYPE 16



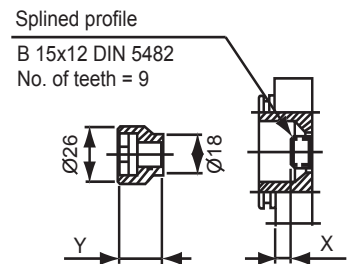
FLANGE TYPE	X	Y
STANDARD	19.5	10

### TYPE 17



FLANGE TYPE	X	Y
E52C	9.9	2.7

### TYPE 18



FLANGE TYPE	X	Y
E52C	6.8	19.3

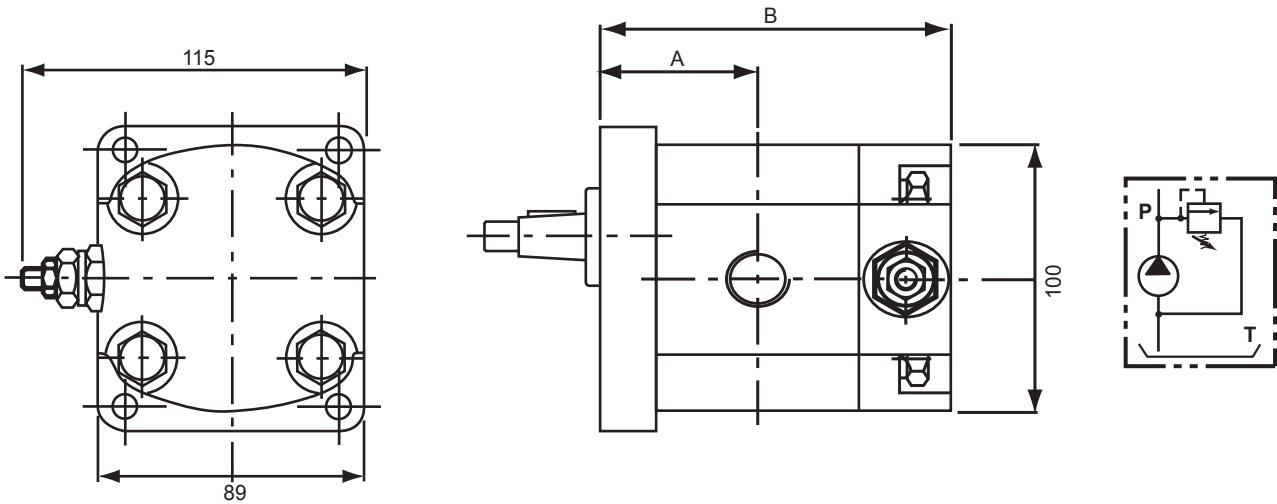
# HC 2P Series

Gear Pumps



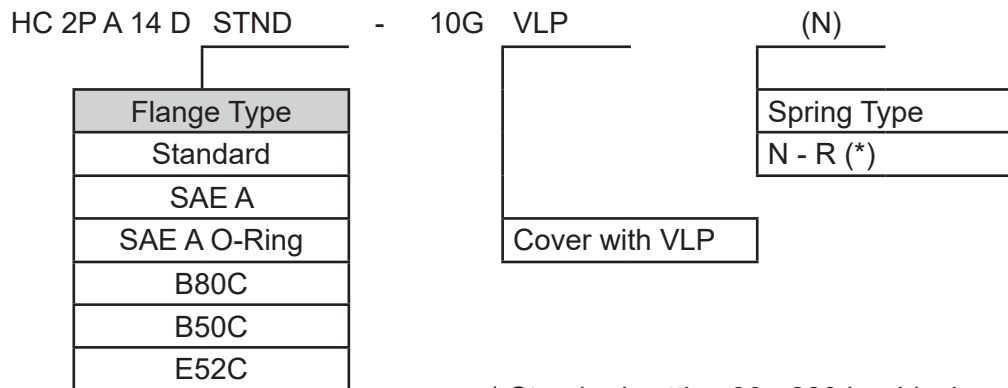
## HC 2P A PUMPS WITH A PRESSURE RELIEF VALVE

### DIMENSIONAL DETAILS



	HC 2P A4	HC 2P A6	HC 2P A8	HC 2P A11	HC 2P A14	HC 2P A16	HC 2P A19	HC 2P A22	HC 2P A26
A	44.4	46	48.1	50.2	52.7	54.8	57.3	59.8	62.7
B	100.8	104	108.2	112.4	117.4	121.6	126.6	131.6	137.4

### HOW TO ORDER



\* Standard setting 30 - 280 bar black spring (N)  
Setting range on demand 80 - 380 bar red spring (R)

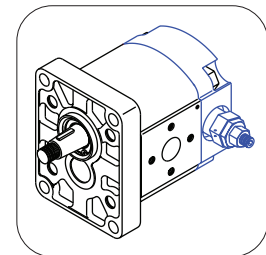
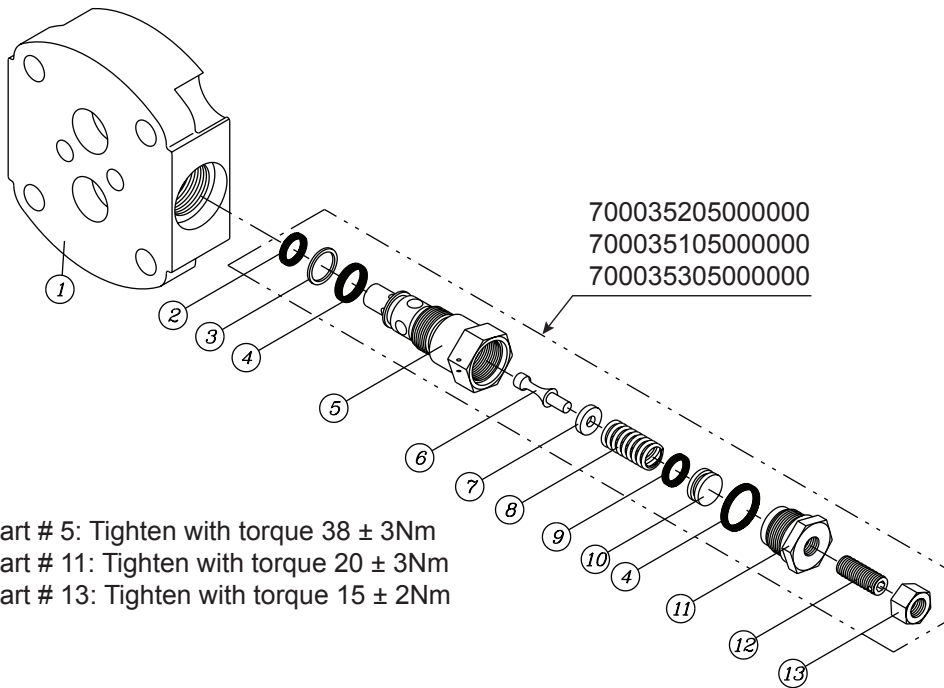
# HC 2P Series

DIN Group 2 Accessories



## COVER WITH PRESSURE RELIEF VALVE (internal exhaust)

Part Number	Pressure	Vent	Relief Valve Assy	Spring Colour	Spring Part Number
0029CVLPIB	10 - 100 bar	P to T	700032505000000	White	06.020.26081.99
0029CVLPIN	40 - 200 bar	P to T	700035105000000	Black	06.020.24411.99
0029CVLPIR	180 - 350 bar	P to T	700035305000000	Red	06.020.24412.99



PART NUMBER	DESCRIPTION	QTY
1	01.003.29475.99 Cover for VLP35S (internal exhaust) - 2SP	1
2	OR 70 806 O-Ring 70°Sh NBR 1.78 x 11.11	1
3	06.235.25921.99 Back-Up ring for VLP 35S	1
4	OR 70 016 O-Ring 70°Sh NBR 1.78 x 15.60	2
5	06.012.29150.99 Body valve VLP 35S	1
6	06.011.28061.99 Poppet for VLP 35S	1
7	06.055.26143.99 Washer for VLP 35S	1
8	06.020.2.... Spring for calibration field (see above)	1
9	OR 70 012 O-Ring 70°Sh NBR 1.78 x 9.25	1
10	06.055.26023.99 Washer for VLP 35S	1
11	06.049.28063.99 Plug for VLP 35S	1
12	06.098.25149.99 Adjusting screw for VLP 35S	1
13	205008 Nut UNI 5589 M8x1	1