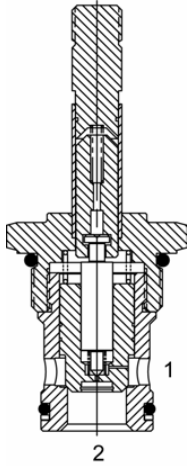


SJ-S2A Pilot Operated Poppet, 2 Way Normally Closed



DESCRIPTION

16 size, 1 5/16-12 thread, "Super" series, solenoid operated, 2 way normally closed, pilot operated poppet valve with reverse flow de-energized.

OPERATION

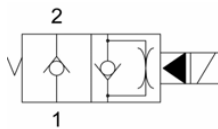
When de-energized the SJ-S2A blocks flow from (1) to (2) and allows reverse flow from (2) to (1). When energized the valve allows flow from (1) to (2) and restricted flow from (2) to (1).

OPERATION OF MANUAL OVERRIDE OPTION: To override, pull knob out. On the detented version, after pulling knob out twist 180 degrees and release. The valve will remain in that position.

FEATURES

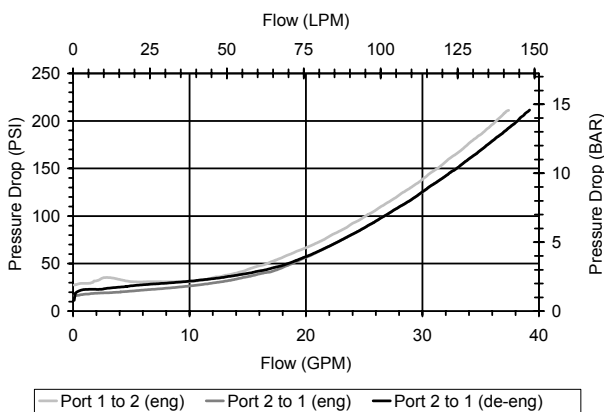
- Hardened parts for long life.
- Efficient wet-armature construction.
- Cartridges are voltage interchangeable.
- Manual override option.
- Industry common cavity.
- Unitized, molded coil design.
- Continuous duty rated solenoid.
- Optional coil voltages and terminations.
- Optional "I" Coil: Weatherproof, Thermal Shock, Immersion Safe.

HYDRAULIC SYMBOL



PERFORMANCE

Actual Test Data (Cartridge Only)



VALVE SPECIFICATIONS

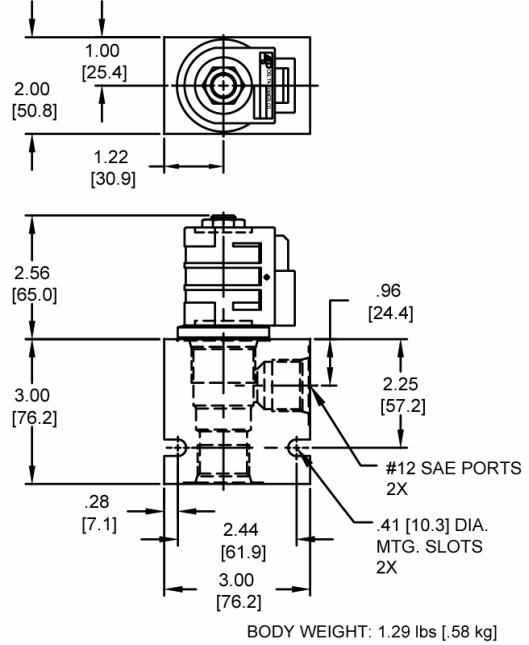
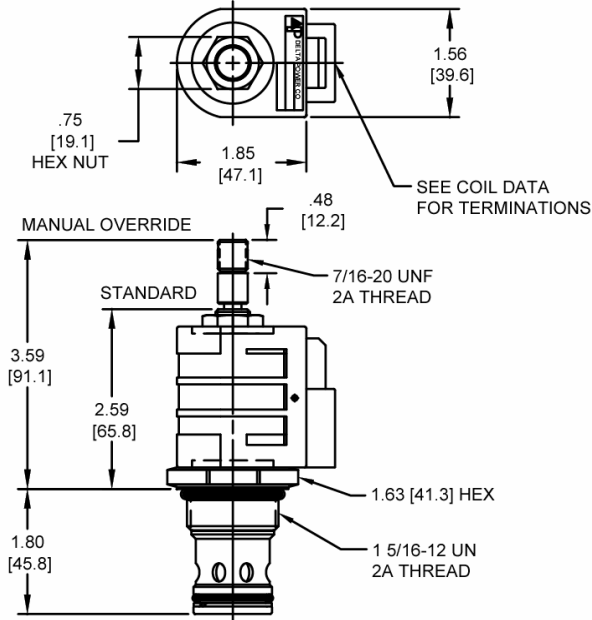
Nominal Flow	30 GPM (114 LPM)
Rated Operating Pressure	3500 PSI (241 bar)
Typical Internal Leakage (150 SSU)	0-10 drops/min
Viscosity Range	36 to 3000 SSU (3 to 647 cSt)
Filtration	ISO 18/16/13
Media Operating Temperature Range	-40° to 250° F (-40° to 120° C)
Weight	.72 lbs. (.32 kg)
Operating Fluid Media	General Purpose Hydraulic Fluid
Cartridge Torque Requirements	90 ft-lbs (122 Nm)
Coil Nut Torque Requirements	4-6 ft-lbs (5.4-8.1 Nm)
Cavity	SUPER 2W
Cavity Form Tool (Finishing)	40500017
Seal Kit	21191400

SJS2A00

Solenoid Operated Directional Controls



DIMENSIONS



ORDERING INFORMATION

SJ-S2A -		-		-		-		-	
OPTIONS		00				Blank		BODIES	
Buna Standard		V0				N		Without Body	
Viton Standard		0M				S		3/4 NPT Ports	
Buna, Override, Detent		VM						#12 SAE Ports	
Viton, Override, Detent		B1							
Buna, Override, Nondetent		V1							
Viton, Override, Nondetent									
"D" COIL TERMINATION								VOLTAGE	
(All DC Except as Noted)								06	6 VDC
DL	Double Lead	SS	Single Spade	IA		12	12 VDC	24	24 VDC
DT	Deutsch on Leads DT04-2P	DS	Double Spade	ID		36	36 VDC	48	48 VDC
ML	Metri-Pack on Leads	HC	DIN 43650 (Hirschman) - (AC & DC)	IJ		25	24 VAC	11	120 VAC
PL	Packard on Leads	CL	Conduit Lead - (AC Only)	IJ		22	220 VAC	22	220 VAC
WL	Weatherpack on Leads	DI	Deutsch - Integral DT04-2P	IM		44	440 VAC		
								IMMERSION PROOF "D" TYPE	
								"1" Coil AMP Superseal - Integral	
								"1" Coil Deutsch - Integral DT04-2P	
								"1" Coil AMP Jr. Timer - Integral	
								"1" Coil Metri-Pack - Integral	

Approximate Coil Weight: .74 lbs (.33 kg.)