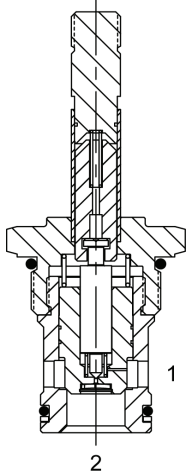


# SJS2B00

Solenoid Operated Directional Controls



## SJ-S2B Pilot Operated Poppet, 2 Way Normally Closed



### DESCRIPTION

16 size, 1 5/16-12 thread, "Super" series, solenoid operated, 2 way normally closed, pilot operated poppet valve with reverse flow energized and de-energized.

### OPERATION

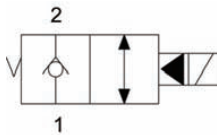
When de-energized the SJ-S2B blocks flow from (1) to (2) and allows reverse flow from (2) to (1). When energized the valve allows flow from (1) to (2) and from (2) to (1).

OPERATION OF MANUAL OVERRIDE OPTION: To override, pull knob out. On the detented version, after pulling knob out twist 180 degrees and release. The valve will remain in that position.

### FEATURES

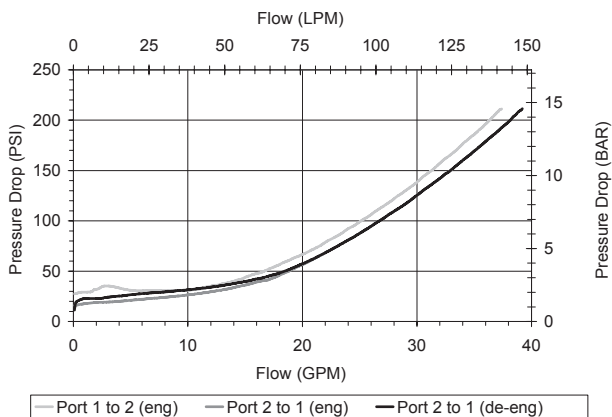
- Hardened parts for long life.
- Efficient wet-armature construction.
- Cartridges are voltage interchangeable.
- Manual override option.
- Industry common cavity.
- Unitized, molded coil design.
- Continuous duty rated solenoid.
- Optional coil voltages and terminations.
- Optional "I" Coil: Weatherproof, Thermal Shock, Immersion Safe.

### HYDRAULIC SYMBOL



### PERFORMANCE

Actual Test Data (Cartridge Only)



### VALVE SPECIFICATIONS

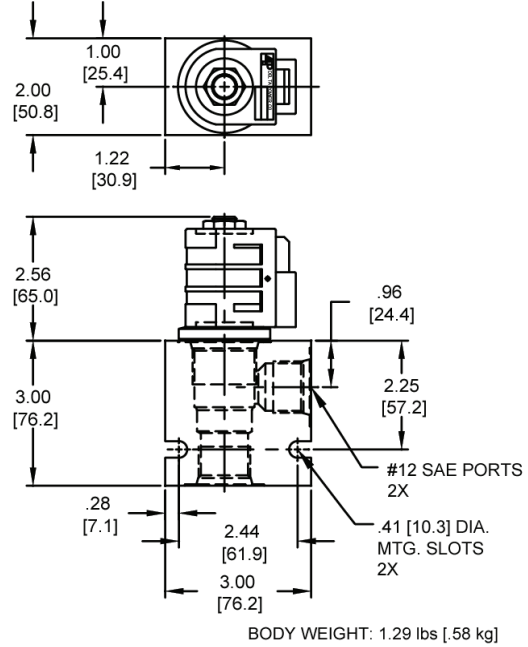
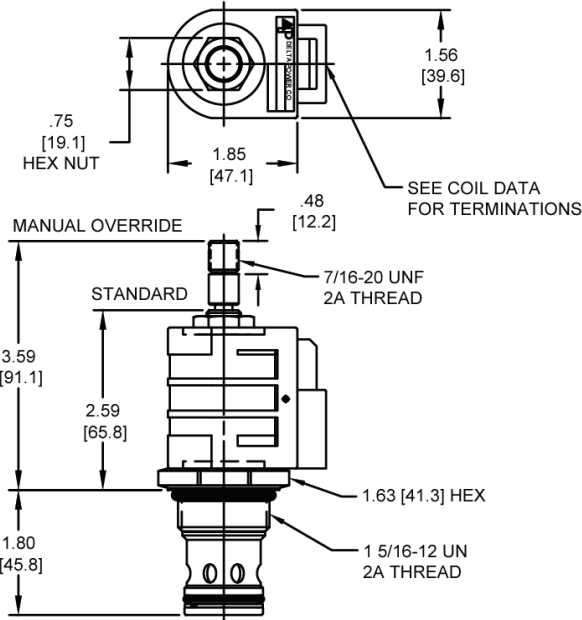
Nominal Flow	30 GPM (114 LPM)
Rated Operating Pressure	3500 PSI (241 bar)
Typical Internal Leakage (150 SSU)	0-10 drops/min
Viscosity Range	36 to 3000 SSU (3 to 647 cSt)
Filtration	ISO 18/16/13
Media Operating Temperature Range	-40° to 250° F (-40° to 120° C)
Weight	.72 lbs. (.32 kg)
Operating Fluid Media	General Purpose Hydraulic Fluid
Cartridge Torque Requirements	90 ft-lbs (122 Nm)
Coil Nut Torque Requirements	4-6 ft-lbs (5.4-8.1 Nm)
Cavity	<a href="#">SUPER 2W</a>
Cavity Form Tool (Finishing)	40500017
Seal Kit	21191401

# SJS2B00

Solenoid Operated Directional Controls



## DIMENSIONS



## ORDERING INFORMATION

SJ-S2B - - - -

### OPTIONS

- Buna Standard 00
- Viton Standard VO
- Buna, Screen A0
- Viton, Screen W0
- Buna, Override, Detent OM
- Viton, Override, Detent VM
- Buna, Override, Non-detent B1
- Viton, Override, Non-detent V1
- Buna, Screen, Override, Non-detent B3
- Viton, Screen, Override, Non-detent V3
- Buna, Screen, Override, Detent B4
- Viton, Screen, Override, Detent V4

Note: Use screen only if flow direction is from (1) to (2)

### "D" COIL TERMINATION

(All DC Except as Noted)

- DL Double Lead
- DT Deutsch on Leads DT04-2P
- ML Metri-Pack on Leads
- PL Packard on Leads
- WL Weatherpack on Leads

- SS Single Spade
- DS Double Spade
- HC DIN 43650 (Hirschman) - (AC & DC)
- CL Conduit Lead - (AC Only)
- DI Deutsch - Integral DT04-2P

### BODIES

- Blank
- N 3/4 NPT Ports
- S #12 SAE Ports

### VOLTAGE

- 06 6 VDC
- 12 12 VDC
- 24 24 VDC
- 36 36 VDC
- 48 48 VDC
- 25 24 VAC
- 11 120 VAC
- 22 220 VAC
- 44 440 VAC

### IMMERSION PROOF "D" TYPE

- IA "I" Coil AMP Superseal - Integral
- ID "I" Coil Deutsch - Integral DT04-2P
- IJ "I" Coil AMP Jr. Timer - Integral
- IM "I" Coil Metri-Pack - Integral

Approximate Coil Weight: .74 lbs (.33 kg.)