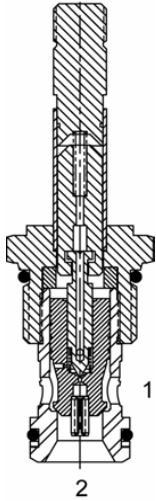


TT-S2A Pilot Operated Poppet, 2 Way Normally Closed



DESCRIPTION

12 size, 1 1/16-12 thread, "Tecnorm" series, solenoid operated, 2 way normally closed, pilot operated poppet valve with reverse flow de-energized.

OPERATION

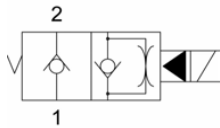
When de-energized the TT-S2A blocks flow from (1) to (2) and allows reverse flow from (2) to (1). When energized the valve allows flow from (1) to (2) and restricts flow from (2) to (1).

OPERATION OF MANUAL OVERRIDE OPTION: To override, pull knob out. On the detented version, after pulling knob out twist 180 degrees and release. The valve will remain in that position.

FEATURES

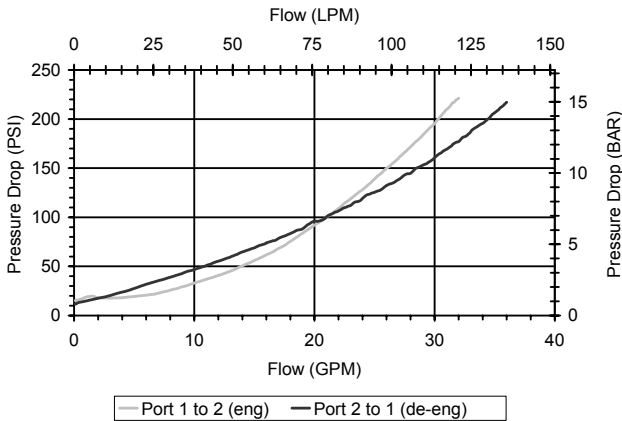
- Hardened parts for long life.
- Efficient wet-armature construction.
- Cartridges are voltage interchangeable.
- Manual override option.
- Industry common cavity.
- Unitized, molded coil design.
- Continuous duty rated solenoid.
- Optional coil voltages and terminations.
- Optional "I" Coil: Weatherproof, Thermal Shock, Immersion Safe.

HYDRAULIC SYMBOL



PERFORMANCE

Actual Test Data (Cartridge Only)



VALVE SPECIFICATIONS

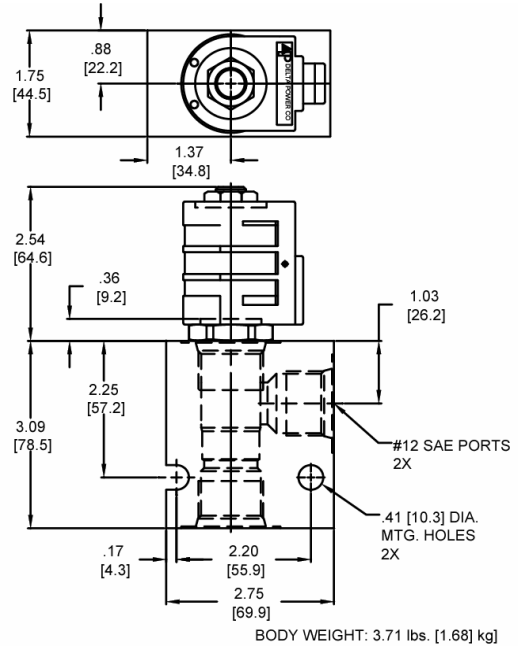
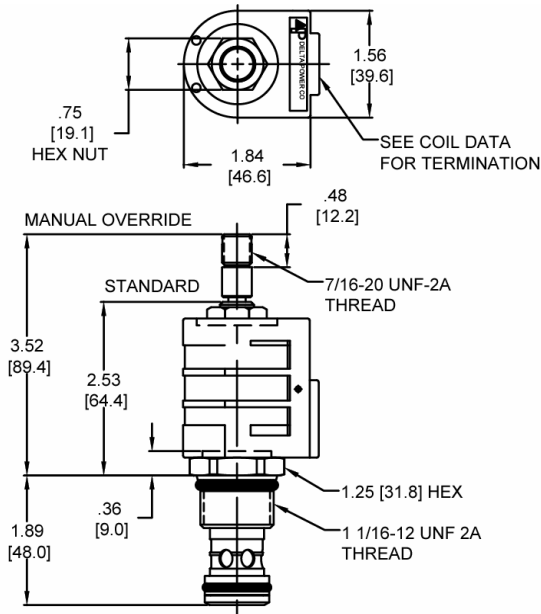
Nominal Flow	25 GPM (95 LPM)
Rated Operating Pressure	3000 PSI (207 bar)
Typical Internal Leakage (150 SSU)	0-5 drops/min
Viscosity Range	36 to 3000 SSU (3 to 647 cSt)
Filtration	ISO 18/16/13
Media Operating Temperature Range	-40° to 250° F (-40° to 120° C)
Weight	.49 lbs. (.22 kg)
Operating Fluid Media	General Purpose Hydraulic Fluid
Cartridge Torque Requirements	70 ft-lbs (94.9 Nm)
Coil Nut Torque Requirements	4-6 ft-lbs (5.4-8.1 Nm)
Cavity	TECNORD 2W
Cavity Form Tool (Finishing)	40500032
Seal Kit	21191300

TTS2A00

Solenoid Operated Directional Controls



DIMENSIONS



ORDERING INFORMATION

TT-S2A -		-		-		-	
OPTIONS				Blank	BODIES		
Buna, Standard	00			S	Without Body		
Viton, Standard	V0				#12 SAE Ports		
Buna, Override	OM						
Viton, Override	VM						
Buna, Screen	A0						
Viton, Screen	W0						
Buna, Override, Non-detent	BI			06	VOLTAGE		
Viton, Override, Non-detent	VI			12	6 VDC		
Buna, Screen, Override, Non-detent	B3			24	12 VDC		
Buna, Screen, Override, Detent	B4			36	24 VDC		
Viton, Screen, Override, Non-detent	V3			48	36 VDC		
Viton, Screen, Override, Detent	V4			25	48 VDC		
				11	24 VAC		
				22	120 VAC		
				44	220 VAC		
					440 VAC		
Note: Use screen only if flow direction is from (1) to (2).							
"D" COIL TERMINATION (All DC Except as Noted)							
DL	Double Lead	SS	Single Spade	IA	IMMERSION PROOF "D" TYPE		
DT	Deutsch on Leads DT04-2P	DS	Double Spade	ID	"I" Coil AMP Superseal - Integral		
ML	Metri-Pack on Leads	HC	DIN 43650 (Hirschman) - (AC & DC)	IJ	"I" Coil Deutsch - Integral DT04-2P		
PL	Packard on Leads	CL	Conduit Lead - (AC Only)	IM	"I" Coil AMP Jr. Timer - Integral		
WL	Weatherpack on Leads	DI	Deutsch - Integral DT04-2P		"I" Coil Metri-Pack - Integral		

Approximate Coil Weight: .74 lbs. (.33 kg.)