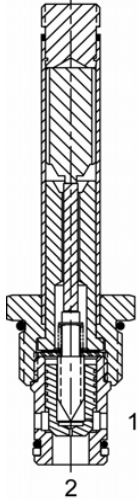


DE-S2C Pilot Operated Poppet, 2 Way, Normally Open



DESCRIPTION

10 size, 7/8-14 thread, "Delta" series, solenoid operated, 2 way normally open, pilot operated poppet valve with free reverse flow energized.

OPERATION

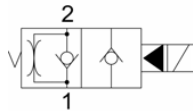
When de-energized the DE-S2C allows flow to pass from (1) to (2), but restricts flow from (2) to (1). When energized the valve blocks flow from (1) to (2) but allows free reverse flow from (2) to (1).

OPERATION OF MANUAL OVERRIDE OPTION: To override, turn the manual override screw clockwise. To release turn the manual override screw counter-clockwise.

FEATURES

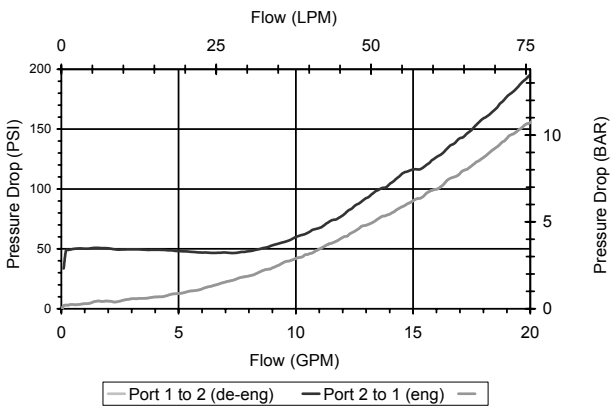
- Hardened parts for long life.
- Efficient wet-armature construction.
- Cartridges are voltage interchangeable.
- Manual override option.
- Industry common cavity.
- Unitized, molded coil design.
- Continuous duty rated solenoid.
- Optional coil voltages and terminations.
- Optional "I" Coil: Weatherproof, Thermal Shock, Immersion Safe.

HYDRAULIC SYMBOL



PERFORMANCE

Actual Test Data (Cartridges Only)



VALVE SPECIFICATIONS

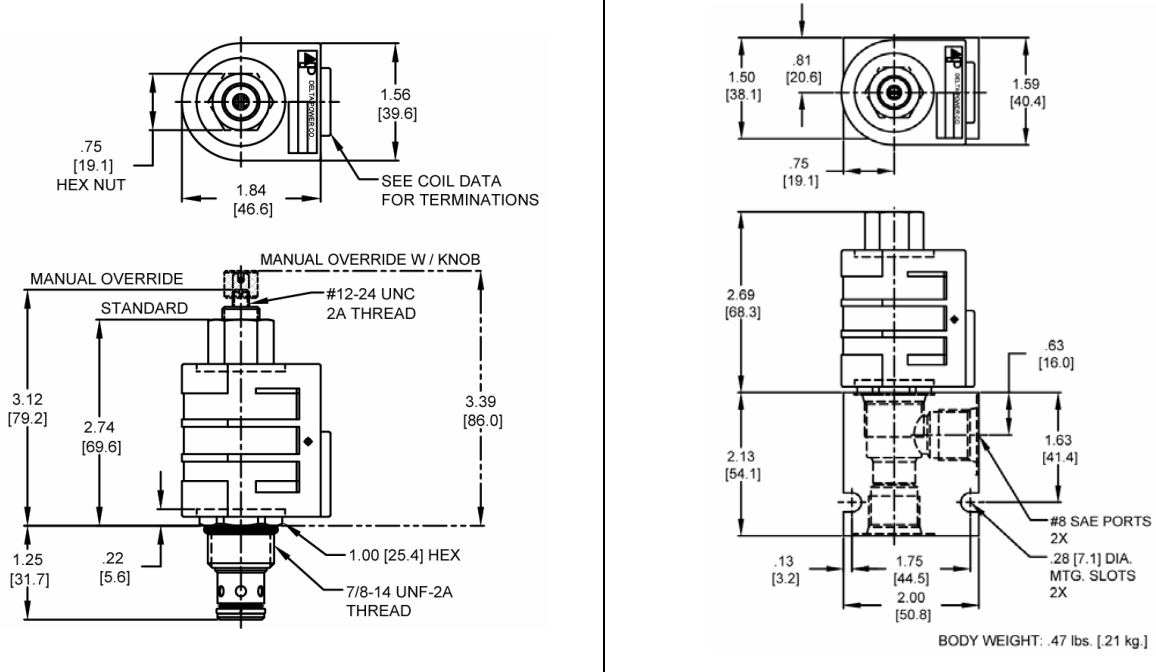
Nominal Flow	15 GPM (57 LPM)
Rated Operating Pressure	3500 PSI (241 bar)
Typical Internal Leakage (150 SSU)	0-5 drops/min
Viscosity Range	36 to 3000 SSU (3 to 647 cSt)
Filtration	ISO 18/16/13
Media Operating Temperature Range	-40° to 250° F (-40° to 120° C)
Weight	.29 lbs. (.13 kg)
Operating Fluid Media	General Purpose Hydraulic Fluid
Cartridge Torque Requirements	30 ft-lbs (40.6 Nm)
Coil Nut Torque Requirements	4-6 ft-lbs (5.4-8.1 Nm)
Cavity	DELTA 2W
Cavity Form Tool (Finishing)	40500000
Seal Kit	21191200

DES2C00

Solenoid Operated Directional Controls



DIMENSIONS



ORDERING INFORMATION

DE-S2C

OPTIONS		BODIES	
Buna Standard	00	Blank	Without Body
Viton Standard	V0	N	3/8 NPTF Ports
Buna, Override	0M	S	#8 SAE Ports
Viton, Override	VM		
Buna, Override, Knob	OK		
Viton, Override, Knob	VK		
Buna, Screen	A0	06	6 VDC
Viton, Screen	W0	12	12 VDC
Buna, Screen, Override	B2	24	24 VDC
Viton, Screen, Override	V2	36	36 VDC
Buna, Screen, Override, Knob	B5	48	48 VDC
Viton, Screen, Override, Knob	V5	25	24 VAC
		11	120 VAC
		22	220 VAC
		44	440 VAC

Note: Use screen only if flow direction is from (1) to (2).

"D" COIL TERMINATION

(All DC Except as Noted)

DL	Double Lead
DT	Deutsch on Leads DT04-2P
MI	Metri-Pack on Leads
PI	Packard on Leads
WL	Weatherpack on Leads

SS	Single Spade
DS	Double Spade
HC	DIN 43650 (Hirschmann) - (AC & DC)
CL	Conduit Lead - (AC Only)
DI	Deutsch - Integral DT04-2P

IMMERSION PROOF "D" TYPE

IA	"I" Coil AMP Superseal - Integral
ID	"I" Coil Deutsch - Integral DT04-2P
IJ	"I" Coil AMP Jr. Timer - Integral
IM	"I" Coil Metri-Pack - Integral

Approximate Coil Weight: .74 lbs/.33 kg.