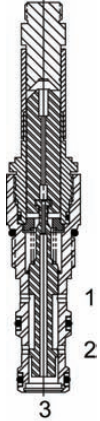


HU-S3F Direct Acting Spool, 3 Way 2 position, High Pressure



DESCRIPTION

12 size, 1 1/16-12 thread, "Tecnord" series, solenoid operated, 3 way 2 position, spool valve.

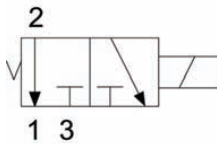
OPERATION

When de-energized the HU-S3F allows flow from (2) to (1) and blocks flow at port 3. When energized the valve allows flow from (2) to (3) and blocks flow at port (1).

FEATURES

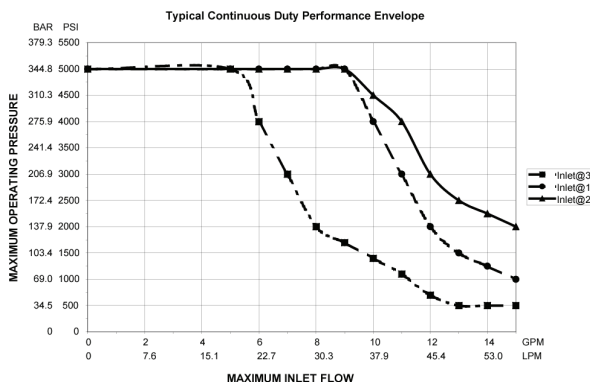
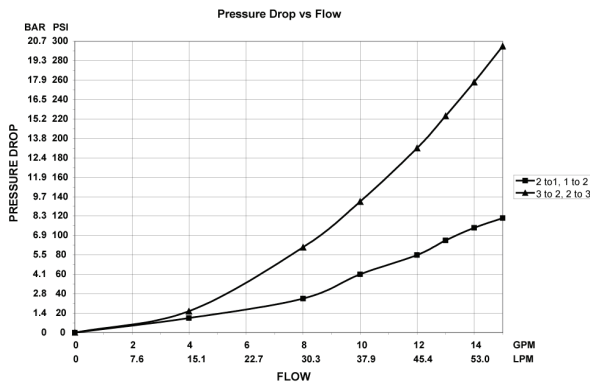
- Hardened parts for long life.
- Efficient wet-armature construction.
- Cartridges are voltage interchangeable.
- Industry common cavity.
- Unitized, molded coil design.
- Continuous duty rated solenoid.
- Optional coil voltages and terminations.

HYDRAULIC SYMBOL



Recommended usage is inlet at port 1 or 2.
See HU-S3E for port 3 inlet.

PERFORMANCE



VALVE SPECIFICATIONS

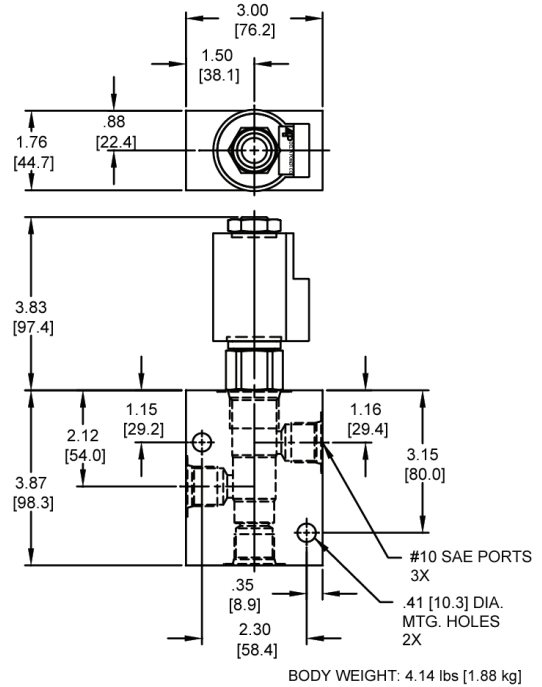
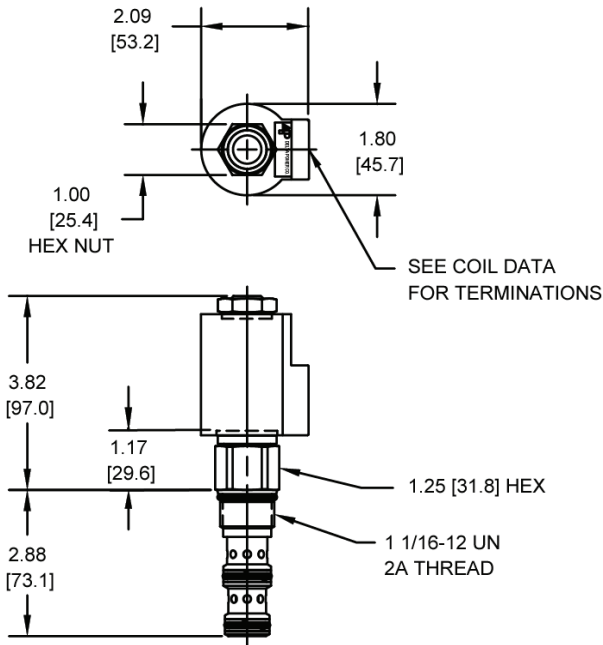
Nominal Flow	15 GPM (57 LPM)
Rated Operating Pressure	5000 PSI (345 bar)
Typical Internal Leakage (150 SSU)	8 cu in/min @ 3000 PSI
Viscosity Range	36 to 3000 SSU (3 to 647 cSt)
Filtration	ISO 18/16/13
Media Operating Temperature Range	-40° to 250° F (-40° to 120° C)
Weight	1.01 lbs. (.46 kg)
Operating Fluid Media	General Purpose Hydraulic Fluid
Cartridge Torque Requirements	70 ft-lbs (94.9 Nm)
Coil Nut Torque Requirements	5-7 ft-lbs (6.8-9.5 Nm) Maximum
Cavity	TECNORD 3W
Cavity Form Tool (Finishing)	40500034
Seal Kit	21191305

HUS3F00

Solenoid Operated Directional Controls



DIMENSIONS



ORDERING INFORMATION

HU-S3F - - - - -

OPTIONS
Buna Standard 00
Viton Standard V0

BODIES
Without Body
#10 SAE Ports S

VOLTAGE
06 6 VDC
12 12 VDC
24 24 VDC
36 36 VDC
48 48 VDC
25 24 VAC
11 120 VAC
22 220 VAC

"T" TYPE COIL TERMINATION

(All DC Except as Noted)
Double Lead DL
Deutsch on leads DT
Metri-Pack on leads ML
Packard on leads PL
Weatherpack on leads WL
Double Spade DS
DIN 43650 (Hirschman) – (AC & DC) HC

Approximate Coil Weight: .89 lbs/.41 kg.