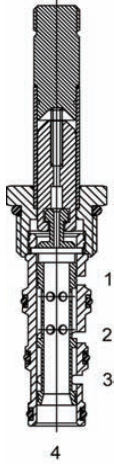


DG-S4C Direct Acting Spool, 4 Way 2 Position, Tandem Center



DESCRIPTION

10 size, 7/8 -14 thread, "Delta" series, solenoid operated, 4 way 2 position, tandem center spool valve.

OPERATION

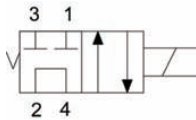
When de-energized the DG-S4C allows flow between (2) and (4), and blocks flow at ports (1) and (3). When energized the valve allows flow from (2) to (3) and (1) to (4).

OPERATION OF MANUAL OVERRIDE OPTION: To override, pull knob out. On the detented version, after pulling knob out twist 180 degrees and release. The valve will remain in that position.

FEATURES

- Hardened parts for long life.
- Efficient wet-armature construction.
- Cartridges are voltage interchangeable.
- Manual override option.
- Industry common cavity.
- Unitized, molded coil design.
- Continuous duty rated solenoid.
- Optional coil voltages and terminations.
- Optional "I" Coil: Weatherproof, Thermal Shock, Immersion Safe.

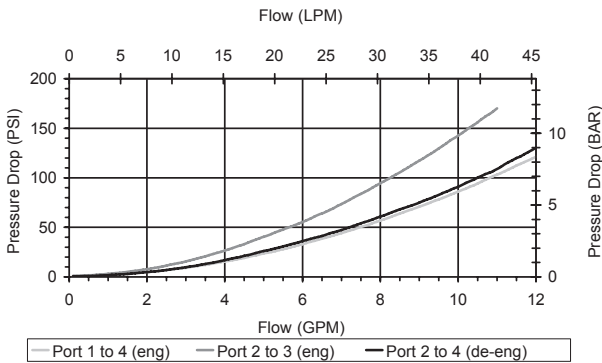
HYDRAULIC SYMBOL



For higher pressures see HG-S4C.
Operational shift limit, 8 GPM.
For shift performance consult chart.

PERFORMANCE

Actual Test Data (Cartridge Only)



VALVE SPECIFICATIONS

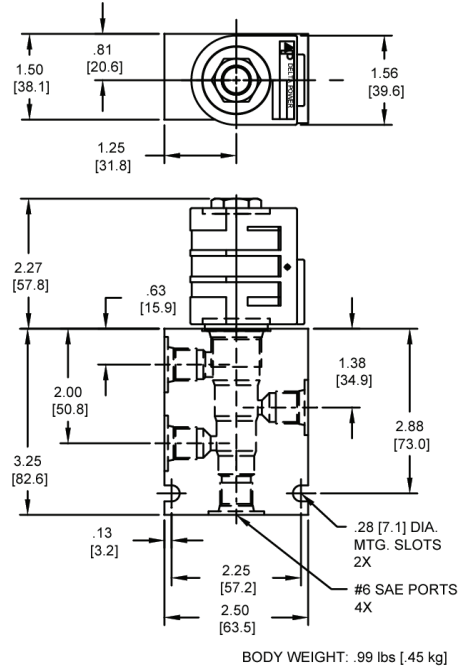
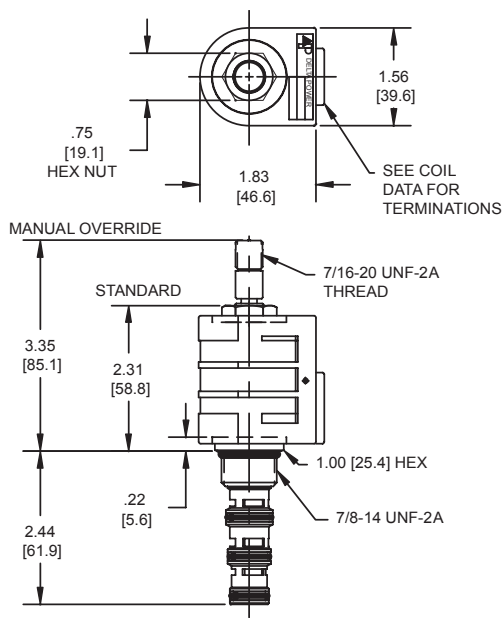
Nominal Flow	8 GPM (30 LPM)
Rated Operating Pressure	3000 PSI (207 bar)
Typical Internal Leakage (150 SSU)	5 cu in/min (82 ml/min) per path
Viscosity Range	36 to 3000 SSU (3 to 647 cSt)
Filtration	ISO 18/16/13
Media Operating Temperature Range	-40° to 250° F (-40° to 120° C)
Weight	.31 lbs (.14 kg)
Operating Fluid Media	General Purpose Hydraulic Fluid
Cartridge Torque Requirements	30 ft-lbs (40.6 Nm)
Coil Nut Torque Requirements	4-6 ft-lbs (5.4-8.1Nm)
Cavity	DELTA 4W
Cavity Form Tool (Finishing)	40500002
Seal Kit	21191214

DGS4C00

Solenoid Operated Directional Controls



DIMENSIONS



ORDERING INFORMATION

DG-S4C - - - -					
<u>OPTIONS</u>			<u>BODIES</u>		
Buna Standard	00	Blank	Without Body		
Viton Standard	V0	N	1/4 NPTF Ports		
Buna, Override	0M	S	#6 SAE Ports		
Viton, Override	VM				
Buna, Override, Non-detent	B1				
Viton, Override, Non-detent	V1				
			<u>VOLTAGE</u>		
		06	6 VDC		
		12	12 VDC		
		24	24 VDC		
		36	36 VDC		
		48	48 VDC		
		25	24 VAC		
		11	120 VAC		
		22	220 VAC		
		44	440 VAC		
<u>"D" COIL TERMINATION</u> (All DC Except as Noted)			<u>IMMERSION PROOF "D" TYPE</u>		
DL	Double Lead	SS	Single Spade	IA	"I" Coil AMP Superseal - Integral
DT	Deutsch on Leads DT04-2P	DS	Double Spade	ID	"I" Coil Deutsch - Integral DT04-2P
ML	Metri-Pack on Leads	HC	DIN 43650 (Hirschman) - (AC & DC)	IJ	"I" Coil AMP Jr. Timer - Integral
PL	Packard on Leads	CL	Conduit Lead - (AC Only)	IM	"I" Coil Metri-Pack - Integral
WL	Weatherpack on Leads	DI	Deutsch - Integral DT04-2P		

Approximate Coil Weight: .74 lbs/.33 kg.