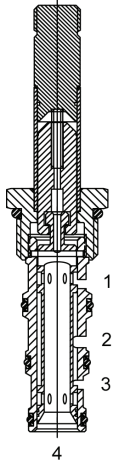


DGS4D00

Solenoid Operated Directional Controls



DG-S4D Direct Acting Spool, 4 Way 2 Position, Criss Cross



DESCRIPTION

10 size, 7/8 -14 thread, "Delta" series, solenoid operated, 4 way 2 position, criss cross, bottom flow spool valve.

OPERATION

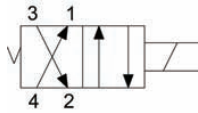
When de-energized the DG-S4D allows flow from (4) to (1), and (3) to (2). When energized the valve allows flow from (4) to (3) and (1) to (2).

OPERATION OF MANUAL OVERRIDE OPTION: To override, pull knob out. On the detented version, after pulling knob out twist 180 degrees and release. The valve will remain in that position.

FEATURES

- Hardened parts for long life.
- Efficient wet-armature construction.
- Cartridges are voltage interchangeable.
- Manual override option.
- Industry common cavity.
- Unitized, molded coil design.
- Continuous duty rated solenoid.
- Optional coil voltages and terminations.
- Optional "I" Coil: Weatherproof, Thermal Shock, Immersion Safe.

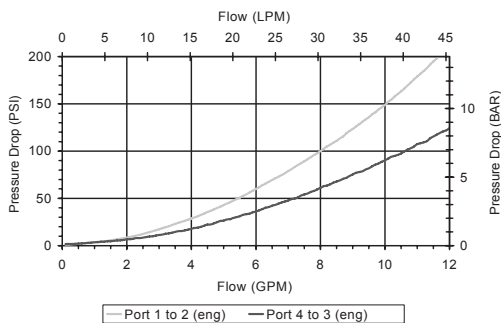
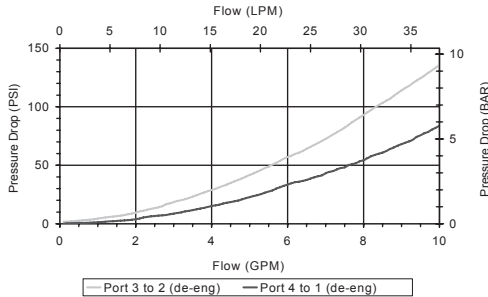
HYDRAULIC SYMBOL



For higher pressures see HG-S4D.
Operational shift limit, 6 GPM.
For shift performance consult chart.

PERFORMANCE

Actual Test Data (Cartridge Only)



VALVE SPECIFICATIONS

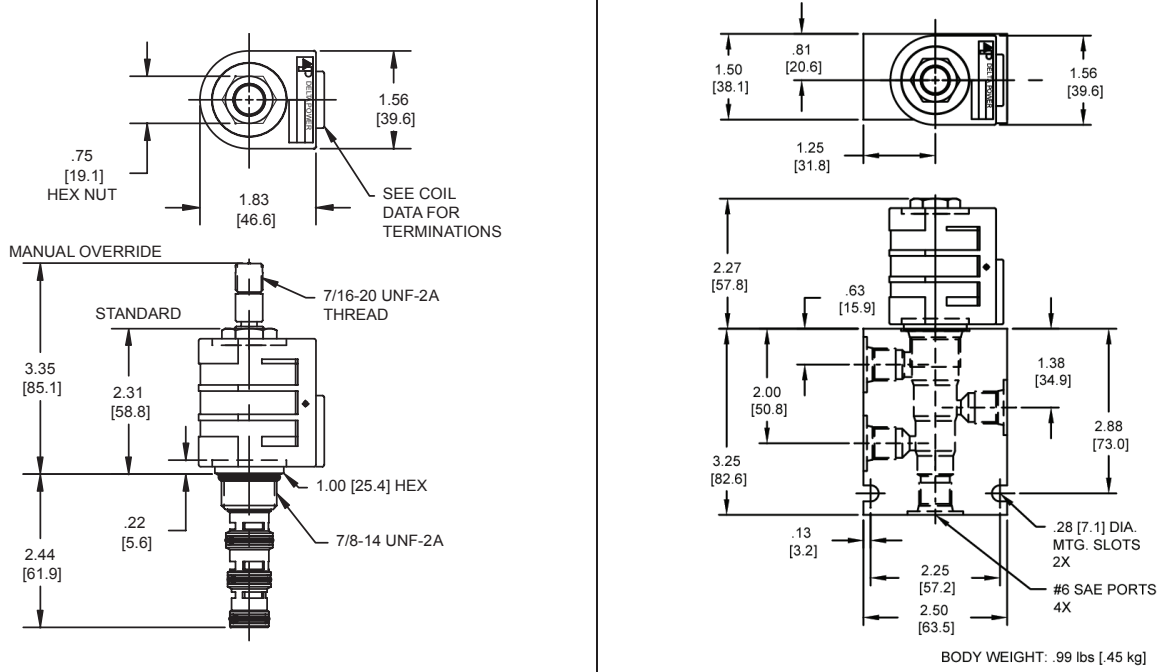
Nominal Flow	6 GPM (23 LPM)
Rated Operating Pressure	3000 PSI (207 bar)
Typical Internal Leakage (150 SSU)	5 cu in/min (82 ml/min) per path
Viscosity Range	36 to 3000 SSU (3 to 647 cSt)
Filtration	ISO 18/16/13
Media Operating Temperature Range	-40° to 250° F (-40° to 120° C)
Weight	.31 lbs (.14 kg)
Operating Fluid Media	General Purpose Hydraulic Fluid
Cartridge Torque Requirements	30 ft-lbs (40.6 Nm)
Coil Nut Torque Requirements	4-6 ft-lbs (5.4-8.1 Nm)
Cavity	DELTA 4W
Cavity Form Tool (Finishing)	40500002
Seal Kit	21191214

DGS4D00

Solenoid Operated Directional Controls



DIMENSIONS



ORDERING INFORMATION

DG-S4D - - - -					
<u>OPTIONS</u>			<u>BODIES</u>		
Buna Standard	00	Blank	Without Body		
Viton Standard	V0	N	1/4 NPTF Ports		
Buna, Override	0M	S	#6 SAE Ports		
Viton, Override	VM				
Buna, Override, Non-detent	B1				
Viton, Override, Non-detent	V1				
			<u>VOLTAGE</u>		
		06	6 VDC		
		12	12 VDC		
		24	24 VDC		
		36	36 VDC		
		48	48 VDC		
		25	24 VAC		
		11	120 VAC		
		22	220 VAC		
		44	440 VAC		
<u>"D" COIL TERMINATION</u> (All DC Except as Noted)			<u>IMMERSION PROOF "D" TYPE</u>		
DL	Double Lead	SS	Single Spade	IA	"I" Coil AMP Superseal - Integral
DT	Deutsch on Leads DT04-2P	DS	Double Spade	ID	"I" Coil Deutsch - Integral DT04-2P
ML	Metri-Pack on Leads	HC	DIN 43650 (Hirschman) - (AC & DC)	IJ	"I" Coil AMP Jr. Timer - Integral
PL	Packard on Leads	CL	Conduit Lead - (AC Only)	IM	"I" Coil Metri-Pack - Integral
WL	Weatherpack on Leads	DI	Deutsch - Integral DT04-2P		

Approximate Coil Weight: .74 lbs/.33 kg.