

# HVS4A00



## Solenoid Operated Directional Controls

### HV-S4A Direct Acting Spool, 4 Way 2 Position



#### DESCRIPTION

"High pressure" 12 size, 1 1/16-12 thread, "Tecnorm" series, solenoid operated, 4 way 2 position, criss cross side flow spool valve.

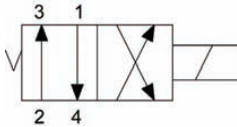
#### OPERATION

When de-energized the HV-S4A allows flow from (1) to (4) and from (2) to (3). When energized the valve allows flow from (2) to (1) and from (3) to (4).

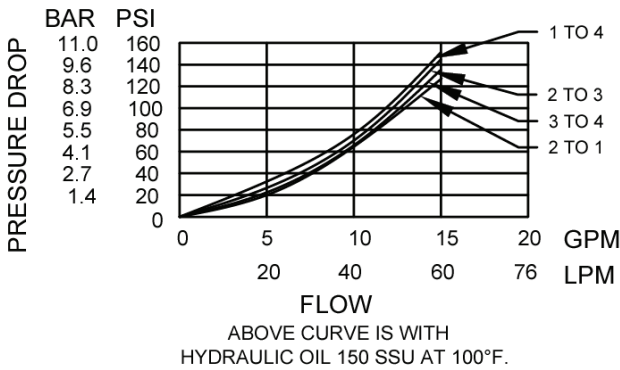
#### FEATURES

- Hardened parts for long life.
- Efficient wet-armature construction.
- Cartridges are voltage interchangeable.
- Industry common cavity.
- Unitized, molded coil design.
- Continuous duty rated solenoid.
- Optional coil voltages and terminations.

#### HYDRAULIC SYMBOL



#### PERFORMANCE



PORTING OPTIONS	FLOW (GPM)	FLOW (GPM)
2	15	56.7
4	8	30

#### VALVE SPECIFICATIONS

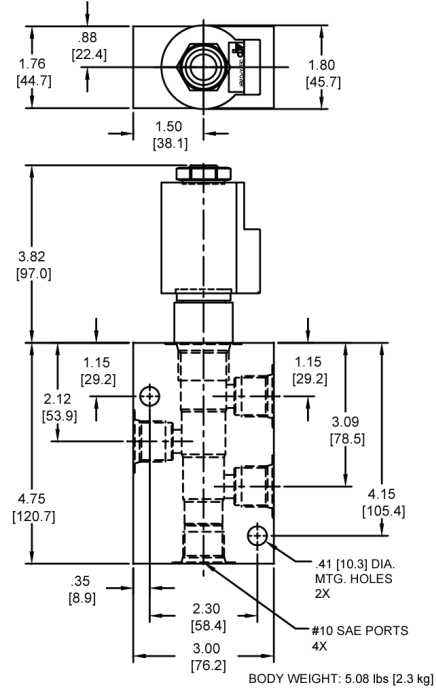
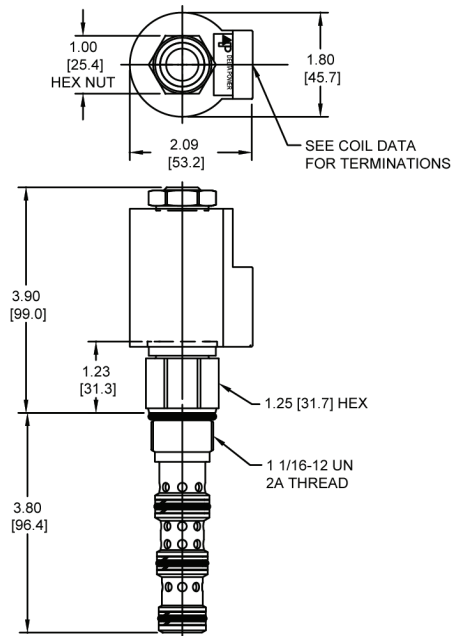
Nominal Flow	15 GPM (57 LPM)
Rated Operating Pressure	5000 PSI (345 bar)
Typical Internal Leakage (150 SSU)	8 cu in/min (131 ml/min) per path
Viscosity Range	36 to 3000 SSU (3 to 647 cSt)
Filtration	ISO 18/16/13
Media Operating Temperature Range	-40° to 250° F (-40° to 120° C)
Weight	1.07 lbs. (.48 kg)
Operating Fluid Media	General Purpose Hydraulic Fluid
Cartridge Torque Requirements	70 ft-lbs (94.9 Nm)
Coil Nut Torque Requirements	5-7 ft-lbs (6.8-9.5Nm)
Cavity	<a href="#">TECNORD 4W</a>
Cavity Form Tool (Finishing)	40500035
Seal Kit	21191309

# HVS4A00



## Solenoid Operated Directional Controls

### DIMENSIONS



### ORDERING INFORMATION

HV-S4A - - - - -			
<u>OPTIONS</u>			<u>BODIES</u>
Buna Standard	00	Blank	Without Body
Viton Standard	V0	S	#10 SAE Ports
<u>"T" COIL TERMINATION</u>			<u>VOLTAGE</u>
(All DC Except as Noted)		06	6 VDC
Double Lead	DL	12	12 VDC
Deutsch on Leads	DT	24	24 VDC
Metri-Pack on Leads	ML	36	36 VDC
Packard on Leads	PL	48	48 VDC
Weatherpack on Leads	WL	25	24 VAC
Double Spade	DS	11	120 VAC
DIN 43650 (Hirschman) - (AC & DC)	HC	22	220 VAC

Approximate Coil Weight: .89 lbs/.41 kg.