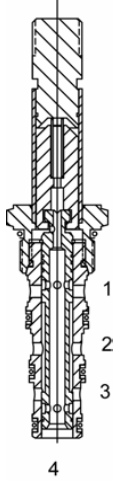


# PQS4A00



## Solenoid Operated Directional Controls

### PQ-S4A Direct Acting Spool, 4 Way 2 Position



#### DESCRIPTION

8 size, 3/4-16 thread, "Power" series, solenoid operated, 4 way 2 position, spool valve.

#### OPERATION

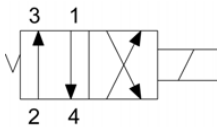
When de-energized the PQ-S4A allows flow from (1) to (4) and from (2) to (3). When energized the valve allows flow from (2) to (1) and from (3) to (4).

OPERATION OF MANUAL OVERRIDE OPTION: To override, pull knob out. On the detented version, after pulling knob out twist 180 degrees and release. The valve will remain in that position.

#### FEATURES

- Hardened parts for long life.
- Efficient wet-armature construction.
- Cartridges are voltage interchangeable.
- Manual override option.
- Industry common cavity.
- Unitized, molded coil design.
- Continuous duty rated solenoid.
- Optional coil voltages and terminations.
- Optional "I" Coil: Weatherproof, Thermal Shock, Immersion Safe.

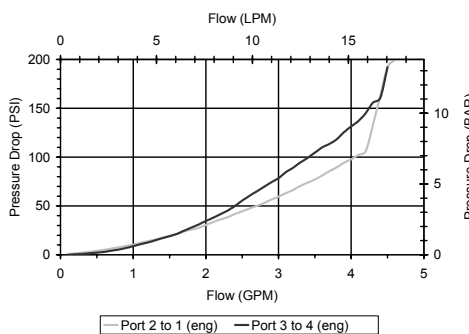
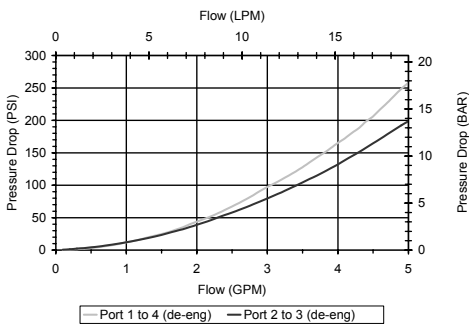
#### HYDRAULIC SYMBOL



Modes of shift operation to 6 GPM, Consult Factory.

#### PERFORMANCE

##### Actual Test Data (Cartridge Only)



#### VALVE SPECIFICATIONS

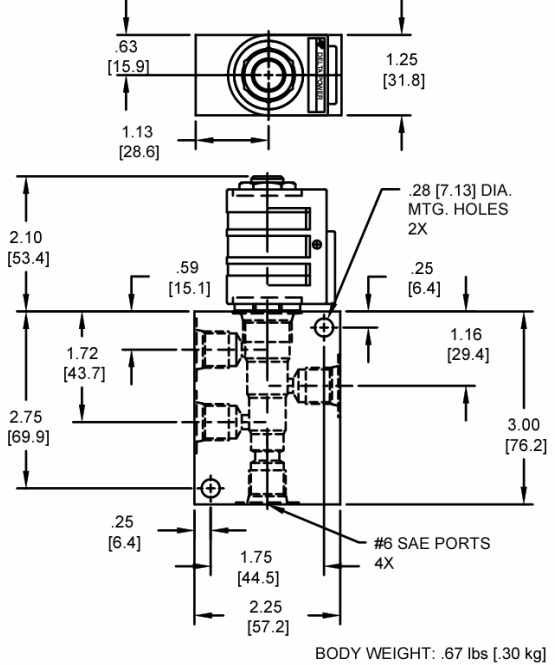
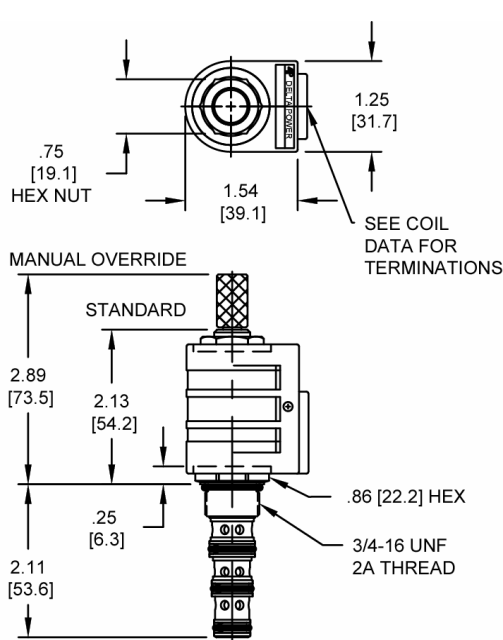
|                                    |                                  |
|------------------------------------|----------------------------------|
| Nominal Flow                       | 4 GPM (15 LPM)                   |
| Rated Operating Pressure           | 3000 PSI (207 bar)               |
| Typical Internal Leakage (150 SSU) | 5 cu in/min (82 ml/min) per path |
| Viscosity Range                    | 36 to 3000 SSU (3 to 647 cSt)    |
| Filtration                         | ISO 18/16/13                     |
| Media Operating Temperature Range  | -40° to 250° F (-40° to 120° C)  |
| Weight                             | .24 lbs. (.11 kg)                |
| Operating Fluid Media              | General Purpose Hydraulic Fluid  |
| Cartridge Torque Requirements      | 25 ft-lbs (34 Nm)                |
| Coil Nut Torque Requirements       | 4-6 ft-lbs (5.4-8.1 Nm)          |
| Cavity                             | <a href="#">POWER 4W</a>         |
| Cavity Form Tool (Finishing)       | 40500029                         |
| Seal Kit                           | 21191108                         |

# PQS4A00

Solenoid Operated Directional Controls



## DIMENSIONS



## ORDERING INFORMATION

PQ-S4A - - - -

### OPTIONS

|                             |    |
|-----------------------------|----|
| Buna Standard               | 00 |
| Viton Standard              | V0 |
| Buna, Override, Detent      | 0M |
| Viton, Override, Detent     | VM |
| Buna, Override, Non-detent  | B1 |
| Viton, Override, Non-detent | V1 |

### BODIES

|       |                |
|-------|----------------|
| Blank | Without Body   |
| N     | 1/4 NPTF Ports |
| S     | #6 SAE Ports   |

### VOLTAGE

|    |         |
|----|---------|
| 06 | 6 VDC   |
| 12 | 12 VDC  |
| 24 | 24 VDC  |
| 36 | 36 VDC  |
| 48 | 48 VDC  |
| 25 | 24 VAC  |
| 11 | 120 VAC |
| 22 | 220 VAC |
| 44 | 440 VAC |

### "P" COIL TERMINATION (All DC Except as Noted)

|    |                          |
|----|--------------------------|
| DL | Double Lead              |
| DT | Deutsch on Leads DT04-2P |
| ML | Metri-Pack on Leads      |
| PL | Packard on Leads         |
| WL | Weatherpack on Leads     |

|    |                                   |
|----|-----------------------------------|
| SS | Single Spade                      |
| DS | Double Spade                      |
| HC | DIN 43650 (Hirschman) - (AC & DC) |
| CL | Conduit Lead - (AC Only)          |
| DI | Deutsch - Integral DT04-2P        |

### IMMERSION PROOF "P" TYPE

|    |                                     |
|----|-------------------------------------|
| IA | "I" Coil AMP Superseal - Integral   |
| ID | "I" Coil Deutsch - Integral DT04-2P |
| IJ | "I" Coil AMP Jr. Timer - Integral   |
| IM | "I" Coil Metri-Pack - Integral      |

Approximate Coil Weight: .42 lbs (.19 kg.)