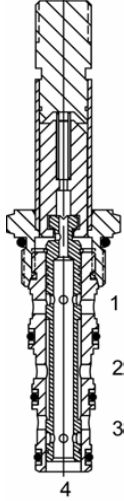


# PQS4D00



## Solenoid Operated Directional Controls

### PQ-S4D Direct Acting Spool, 4 Way 2 Position, Criss Cross



#### DESCRIPTION

8 size, 3/4-16 thread, "Power" series, solenoid operated, 4 way 2 position, criss cross, bottom flow spool valve.

#### OPERATION

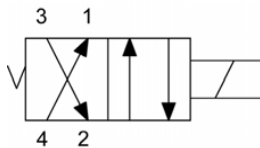
When de-energized the PQ-S4D allows flow from (3) to (2), and from (4) to (1). When energized the valve allows flow from (1) to (2) and from (4) to (3).

OPERATION OF MANUAL OVERRIDE OPTION: To override, pull knob out. On the detented version, after pulling knob out twist 180 degrees and release. The valve will remain in that position.

#### FEATURES

- Hardened parts for long life.
- Efficient wet-armature construction.
- Cartridges are voltage interchangeable.
- Manual override option.
- Industry common cavity.
- Unitized, molded coil design.
- Continuous duty rated solenoid.
- Optional coil voltages and terminations.
- Optional "I" Coil: Weatherproof, Thermal Shock, Immersion Safe.

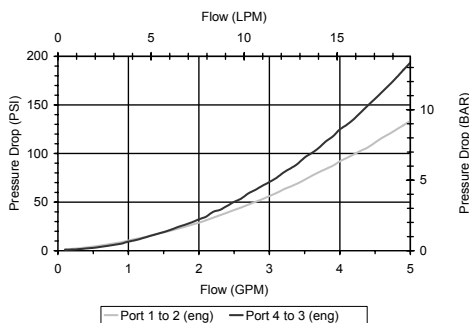
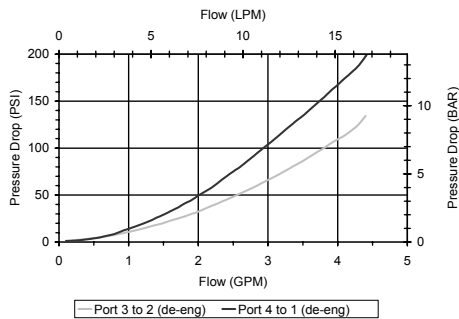
#### HYDRAULIC SYMBOL



Modes of shift operation to 3 GPM, Consult Factory.

#### PERFORMANCE

##### Actual Test Data (Cartridge Only)



#### VALVE SPECIFICATIONS

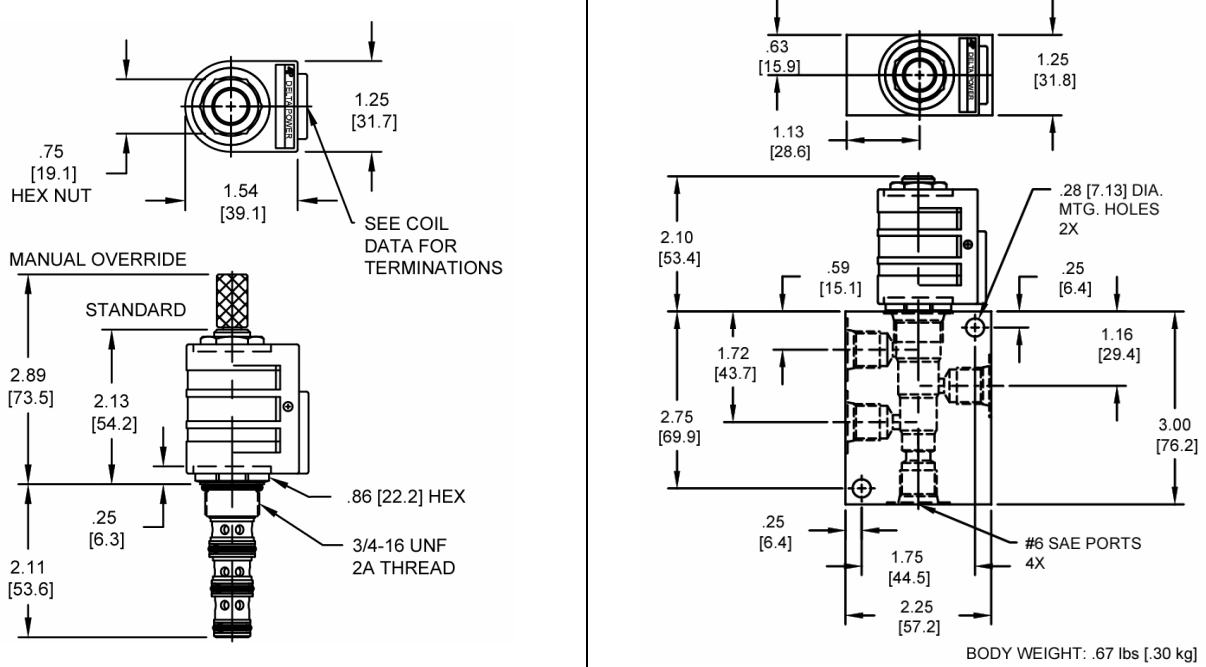
|                                    |                                  |
|------------------------------------|----------------------------------|
| Maximum Flow                       | 2.5 GPM (9 LPM)                  |
| Rated Operating Pressure           | 3000 PSI (207 bar)               |
| Typical Internal Leakage (150 SSU) | 5 cu in/min (82 ml/min) per path |
| Viscosity Range                    | 36 to 3000 SSU (3 to 647 cSt)    |
| Filtration                         | ISO 18/16/13                     |
| Media Operating Temperature Range  | -40° to 250° F (-40° to 120° C)  |
| Weight                             | .24 lbs. (.11 kg)                |
| Operating Fluid Media              | General Purpose Hydraulic Fluid  |
| Cartridge Torque Requirements      | 25 ft-lbs (33.8 Nm)              |
| Coil Nut Torque Requirements       | 4-6 ft-lbs (5.4-8.1 Nm)          |
| Cavity                             | <a href="#">POWER 4W</a>         |
| Cavity Form Tool (Finishing)       | 40500029                         |
| Seal Kit                           | 21191108                         |

# PQS4D00

Solenoid Operated Directional Controls



## DIMENSIONS



## ORDERING INFORMATION

| PQ-S4D                      |                          | OPTIONS                     |                                   | BODIES |                                     | VOLTAGE |         |
|-----------------------------|--------------------------|-----------------------------|-----------------------------------|--------|-------------------------------------|---------|---------|
|                             |                          | Buna Standard               | 00                                | Blank  | Without Body                        | 06      | 6 VDC   |
|                             |                          | Viton Standard              | V0                                | N      | 1/4 NPTF Ports                      | 12      | 12 VDC  |
|                             |                          | Buna, Override, Detent      | 0M                                | S      | #6 SAE Ports                        | 24      | 24 VDC  |
|                             |                          | Viton, Override, Detent     | VM                                |        |                                     | 36      | 36 VDC  |
|                             |                          | Buna, Override, Non-detent  | B1                                |        |                                     | 48      | 48 VDC  |
|                             |                          | Viton, Override, Non-detent | V1                                |        |                                     | 25      | 24 VAC  |
|                             |                          |                             |                                   |        |                                     | 11      | 120 VAC |
|                             |                          |                             |                                   |        |                                     | 22      | 220 VAC |
|                             |                          |                             |                                   |        |                                     | 44      | 440 VAC |
| <b>"P" COIL TERMINATION</b> |                          |                             |                                   |        |                                     |         |         |
| (All DC Except as Noted)    |                          |                             |                                   |        |                                     |         |         |
| DL                          | Double Lead              | SS                          | Single Spade                      | IA     | "I" Coil AMP Superseal - Integral   |         |         |
| DT                          | Deutsch on Leads DT04-2P | DS                          | Double Spade                      | ID     | "I" Coil Deutsch - Integral DT04-2P |         |         |
| ML                          | Metri-Pack on Leads      | HC                          | DIN 43650 (Hirschman) - (AC & DC) | IJ     | "I" Coil AMP Jr. Timer - Integral   |         |         |
| PL                          | Packard on Leads         | CL                          | Conduit Lead - (AC Only)          | IM     | "I" Coil Metri-Pack - Integral      |         |         |
| WL                          | Weatherpack on Leads     | DI                          | Deutsch - Integral DT04-2P        |        |                                     |         |         |

Approximate Coil Weight: .42 lbs (.19 kg.)