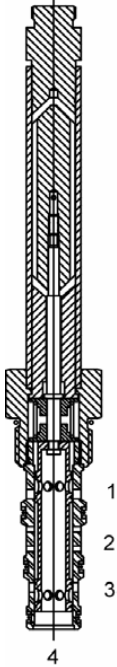


### DG-S4M Direct Acting Spool, 4 Way 3 Position, Motor Center



#### DESCRIPTION

10 size, 7/8-14 thread, "Delta" series, solenoid operated, 4 way 3 position motor center spool valve.

#### OPERATION

When de-energized the DG-S4M block the flow at (2) and allows flow between (1), (3) and (4). When outer coil (S1) is energized the valve allows flow from (2) to (1) and from (3) to (4). When inner coil (S2) is energized the valve allows flow from (2) to (3) and from (1) to (4).

#### OPERATION OF MANUAL OVERRIDE OPTION:

Bi-Directional Override - Spring biased in neutral center position, when pushed the valve shifts in the S2 direction, when pulled the valve shifts in the S1 direction.

Push Only Override - Spring biased in neutral center position, when pushed the valve shifts in the S2 direction.

#### FEATURES

- Hardened parts for long life.
- Efficient wet-armature construction.
- Cartridges are voltage interchangeable.
- Manual override option.
- Industry common cavity.
- Unitized, molded coil design.
- Continuous duty rated solenoid.
- Optional coil voltages and terminations.
- Optional "I" Coil: Weatherproof, Thermal Shock, Immersion Safe.

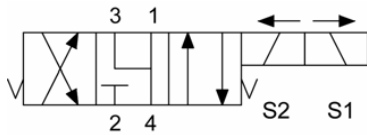


Uses "L" Coil.  
Flow rating is at 1000 PSID maximum differential loading.

#### VALVE SPECIFICATIONS

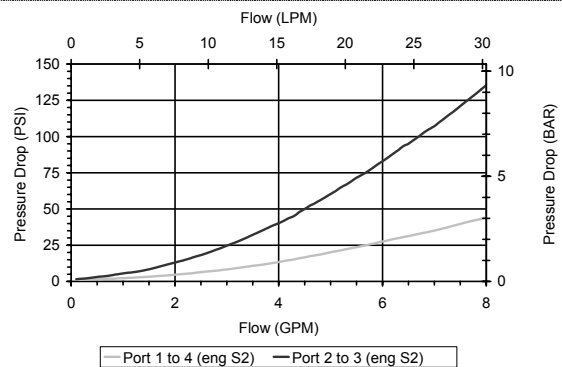
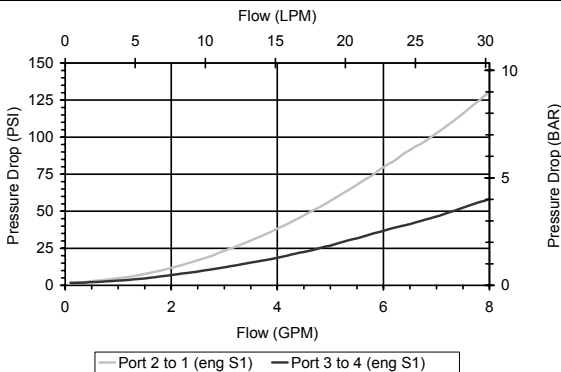
Nominal Flow	6 GPM (23 LPM)
Rated Operating Pressure	3000 PSI (207 bar)
Typical Internal Leakage (150 SSU)	5 cu in/min (82 ml/min) per path
Viscosity Range	36 to 3000 SSU (3 to 647 cSt)
Filtration	ISO 18/16/13
Media Operating Temperature Range	-40° to 250° F (-40° to 120° C)
Weight	.51 lbs. (.23 kg)
Operating Fluid Media	General Purpose Hydraulic Fluid
Cartridge Torque Requirements	30 ft-lbs (40.6 Nm)
Coil Nut Torque Requirements	4-6 ft-lbs (5.4-8.1 Nm)
Cavity	<a href="#">DELTA 4W</a>
Cavity Form Tool (Finishing)	40500002
Seal Kit	21191214

#### HYDRAULIC SYMBOL



#### PERFORMANCE

##### Actual Test Data (Cartridge Only)

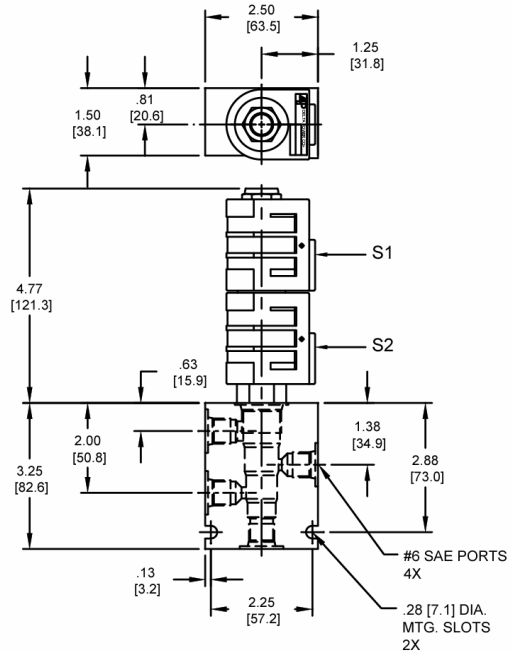
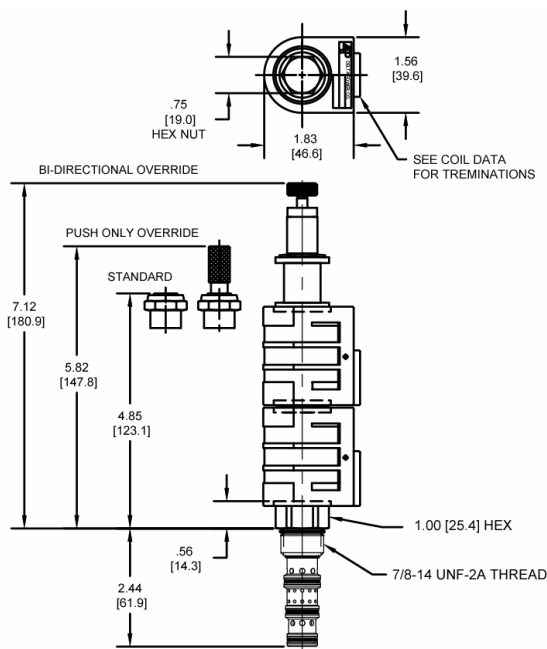


# DGS4M00

Solenoid Operated Directional Controls



## DIMENSIONS



## ORDERING INFORMATION

DG-S4M

OPTIONS	
Buna Standard	00
Viton Standard	V0
Buna, Override	0M
Viton, Override	VM
Buna, Push only override	0P
Viton, Push only override	VP

BODIES	
Blank	
1/4 NPTF Ports	N
#6 SAE Ports	S

VOLTAGE	
06	6 VDC
12	12 VDC
24	24 VDC
36	36 VDC
48	48 VDC
25	24 VAC
11	120 VAC
22	220 VAC
44	440 VAC

**"L" COIL TERMINATION**  
(All DC Except as Noted)

DL	Double Lead
DT	Deutsch on Leads DT04-2P
ML	Metri-Pack on Leads
PL	Packard on Leads
WL	Weatherpack on Leads

SS	Single Spade
DS	Double Spade
HC	DIN 43650 (Hirschman) – (AC & DC)
CL	Conduit Lead – (AC Only)
DI	Deutsch – Integral DT04-2P

**IMMERSION PROOF "L" TYPE**

IA	"I" Coil AMP Superseal - Integral
ID	"I" Coil Deutsch – Integral DT04-2P
IJ	"I" Coil AMP Jr. Timer - Integral
IM	"I" Coil Metri-Pack – Integral

Approximate Coil Weight: .68 lbs. (.31 kg.)