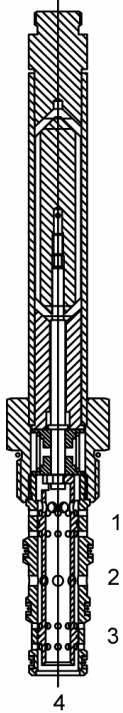


DG-S40 Direct Acting Spool, 4 Way 3 Position, Open Center



DESCRIPTION

10 size, 7/8-14 thread, "Delta" series, solenoid operated, 4 way 3 position, open center spool valve.

OPERATION

When de-energized the DG-S40 is open to all ports, all pressures are relieved. When outer coil (S1) is energized the valve allows flow from (2) to (1) and from (3) to (4). When inner coil (S2) is energized the valve allows flow from (2) to (3) and from (1) to (4).

OPERATION OF MANUAL OVERRIDE OPTION:

Bi-Directional Override - Spring biased in neutral center position, when pushed the valve shifts in the S2 direction, when pulled the valve shifts in the S1 direction.

Push Only Override - Spring biased in neutral center position, when pushed the valve shifts in the S2 direction.

FEATURES

- Hardened parts for long life.
- Efficient wet-armature construction.
- Cartridges are voltage interchangeable.
- Manual override options.
- Industry common cavity.
- Unitized, molded coil design.
- Continuous duty rated solenoid.
- Optional coil voltages and terminations.
- Optional "I" Coil: Weatherproof, Thermal Shock, Immersion Safe.

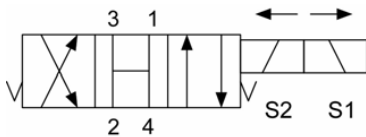


Uses "L" coil.

VALVE SPECIFICATIONS

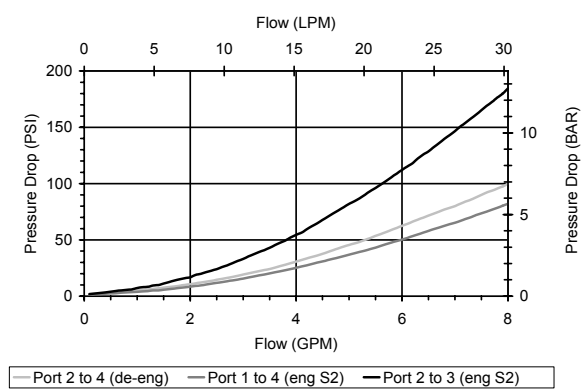
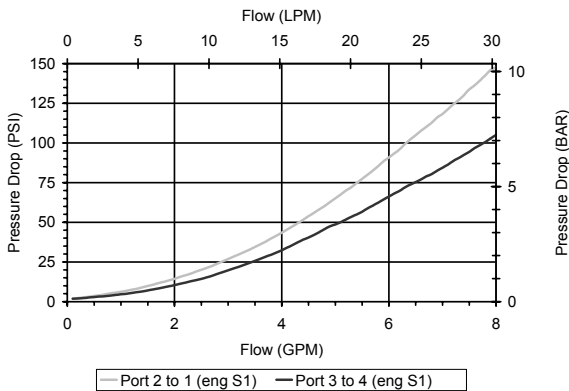
Nominal Flow	8 GPM (30 LPM)
Rated Operating Pressure	3000 PSI (207 bar)
Typical Internal Leakage (150 SSU)	5 cu in/min (82 ml/min) per path
Viscosity Range	36 to 3000 SSU (3 to 647 cSt)
Filtration	ISO 18/16/13
Media Operating Temperature Range	-40° to 250° F (-40° to 120° C)
Weight	.50 lbs. (.23 kg)
Operating Fluid Media	General Purpose Hydraulic Fluid
Cartridge Torque Requirements	30 ft-lbs (40.6 Nm)
Coil Nut Torque Requirements	4-6 ft-lbs (5.4 to 8.1 Nm)
Cavity	DELTA 4W
Cavity Form Tool (Finishing)	40500002
Seal Kit	21191214

HYDRAULIC SYMBOL



PERFORMANCE

Actual Test Data (Cartridge Only)

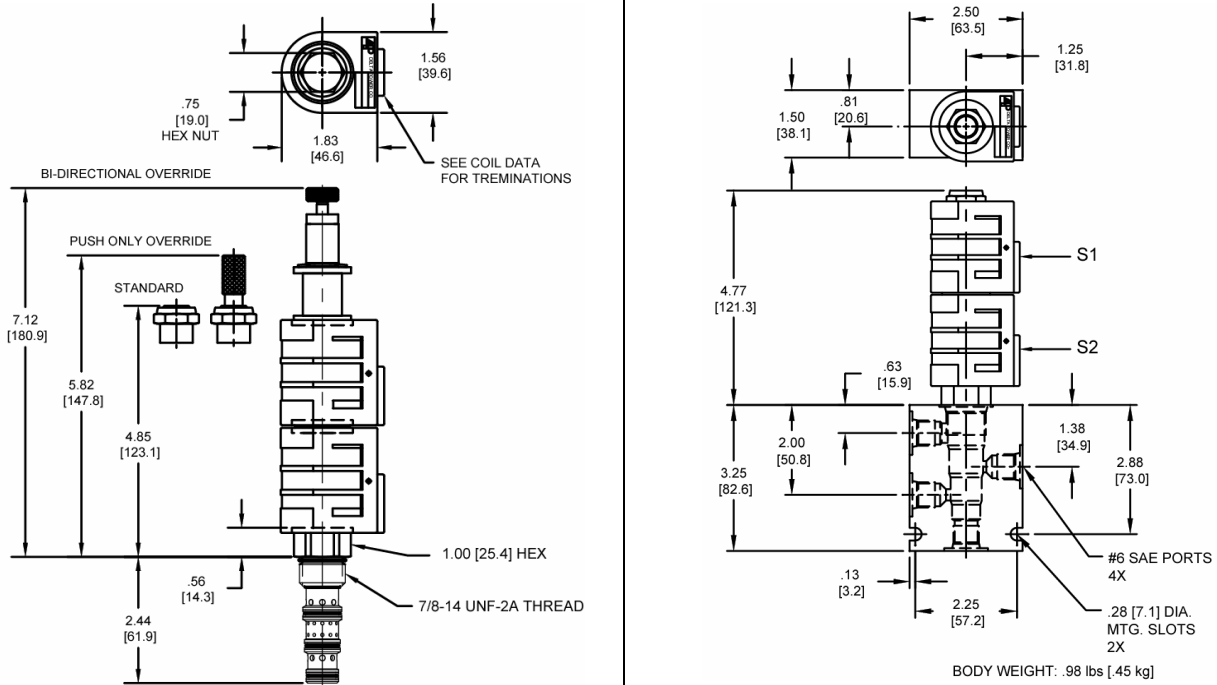


DGS4000

Solenoid Operated Directional Controls



DIMENSIONS



ORDERING INFORMATION

DG-S40

OPTIONS				BODIES
Buna Standard	00			Blank
Viton Standard	V0			N
Buna, Override	0M			S
Viton, Override	VM			
Buna, Push only override	0P			
Viton, Push only override	VP			

VOLTAGE

06	6 VDC
12	12 VDC
24	24 VDC
36	36 VDC
48	48 VDC
25	24 VAC
11	120 VAC
22	220 VAC
44	440 VAC

"L" COIL TERMINATION

(All DC Except as Noted)

DL	Double Lead
DT	Deutsch on Leads DT04-2P
ML	Metri-Pack on Leads
PL	Packard on Leads
WL	Weatherpack on Leads

SS	Single Spade
DS	Double Spade
HC	DIN 43650 (Hirschman) – (AC & DC)
CL	Conduit Lead – (AC Only)
DI	Deutsch – Integral DT04-2P

IMMERSION PROOF "L" TYPE

IA	"I" Coil AMP Superseal - Integral
ID	"I" Coil Deutsch – Integral DT04-2P
IJ	"I" Coil AMP Jr. Timer - Integral
IM	"I" Coil Metri-Pack – Integral

Approximate Coil Weight: .68 lbs. (.31 kg.)