

FT12512 Silver Series



Inline Throttle Valve



Features

- Pressures to 210 Bar, 3000 PSI.
- FT12512 silver series throttle valves are of nickel plated brass construction with an aluminium hand knob and as such are suitable for medium pressure general applications and particularly suited for use in applications the specifically preclude the use of ferrous materials.
- A locking screw in the hand knob enables the adjustment to be secured against vibration or accidental / unauthorised alteration.
- A vernier type calibration between the adjustment knob and the valve body enables repetition of particular settings.
- The capped adjustment knob inhibits the ingress of water and grime, minimising the susceptibility to corrosion and seizing of the spindle while the oil immersed screw thread lends the valve to smooth and accurate adjustment.
- A panel mount kit is available as an option.
- Stainless steel construction is available as an option.

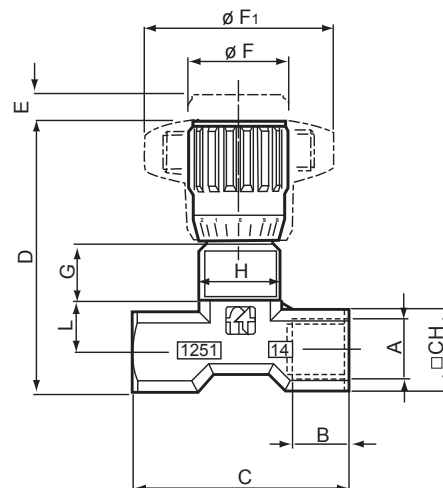
Dimensional Details

Type	A	B	C	D	E	F	F1	G	H	L	CH	Weight kg
18	1/8"	8	40	55	4	22	40	12	M15X1	9.5	15	0.105
14	1/4"	12	46	57	4.5	22	40	11.5	M17X1	11	17	0.122
38	3/8"	13	55	69	7	27	50	12.5	M20X1	15	22	0.233
12	1/2"	16	70	82	10	33	70	13	M25X1.5	19	27	0.455
34	3/4"	20	91	100	12	38	80	15	M30X1.5	22	34	0.860



How to Order

Code	Type
FT12512	12



FT12512 Silver Series

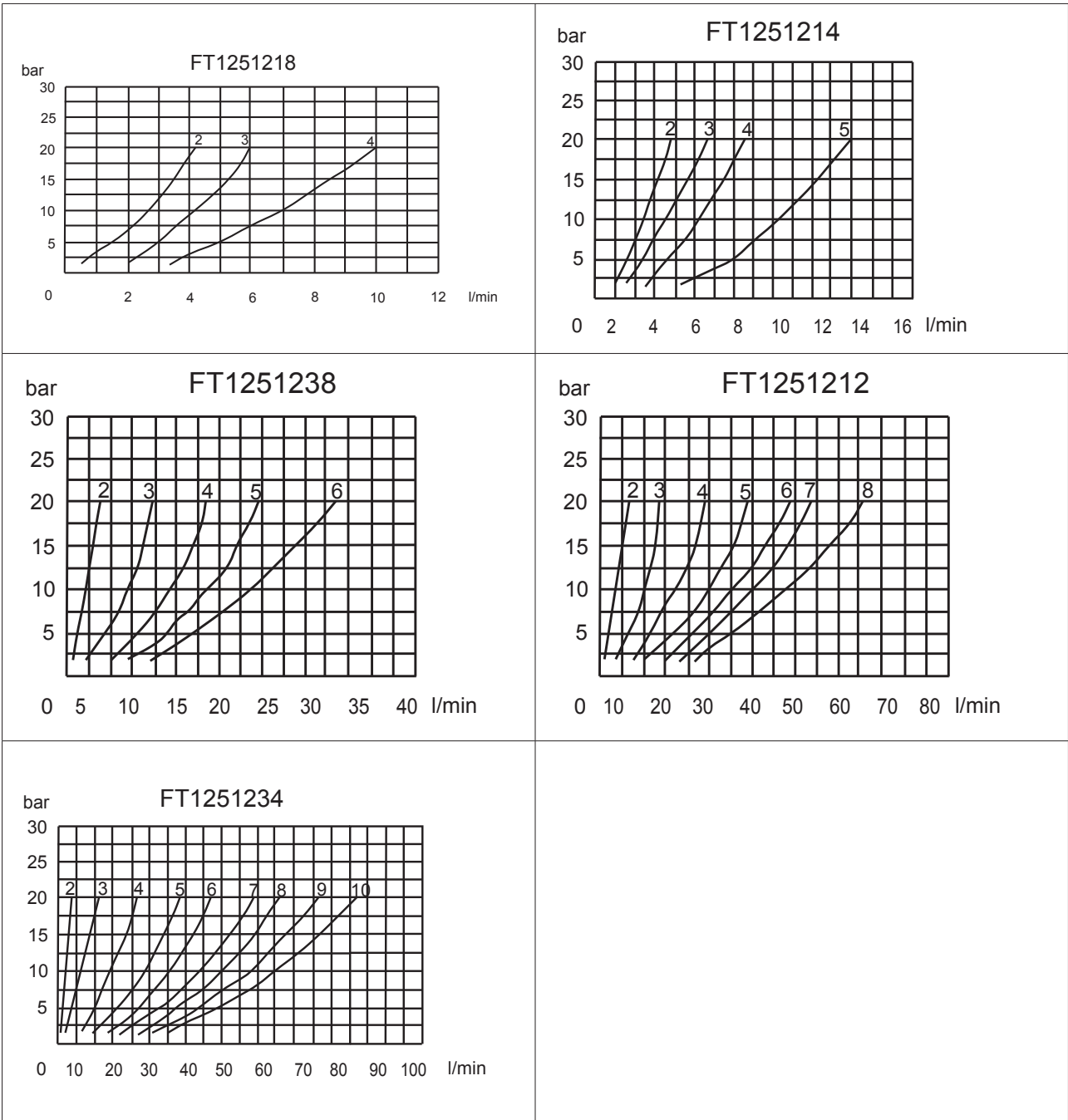


Inline Throttle Valve

Technical Specifications

Type	Working Pressure Bar	Working Temperature	Recommended Max. Flow Rate l/min	Panel Mount Kit
18	210	-20°C to 100°C	10	FT120318
14	210	-20°C to 100°C	15	FT120314
38	210	-20°C to 100°C	30	FT120338
12	210	-20°C to 100°C	50	FT120312
34	210	-20°C to 100°C	80	FT120334

Flow Rate Curves



FT12515 Silver Series



Inline Flow Control Valve

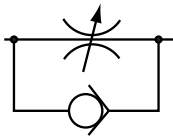


Features

- Pressures to 210 Bar, 3000 PSI.
- FT12515 silver series flow control valves are of nickel plated brass construction with an aluminium hand knob and as such are suitable for medium pressure general applications and particularly suited for use in applications that specifically preclude the use of ferrous materials.
- A locking screw in the hand knob enables the adjustment to be secured against vibration or accidental / unauthorised alteration.
- A vernier type calibration between the adjustment knob and the valve body enables repetition of particular settings.
- The capped adjustment knob inhibits the ingress of water and grime, minimising the susceptibility to corrosion and seizing of the spindle while the oil immersed screw thread lends the valve to smooth and accurate adjustment.
- A panel mount kit is available as an option.
- Stainless steel construction is available as an option.

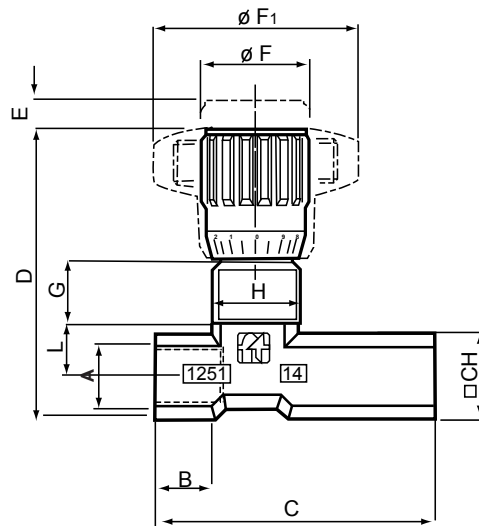
Dimensional Details

Type	A	B	C	D	E	F	F1	G	H	L	CH	Weight kg
14	1/4"	12	56	57	4.5	22	40	11.5	M17X1	11	17	0.138
38	3/8"	13	64.5	69	7	27	50	12.5	M20X1	15	22	0.259
12	1/2"	16	87	82	10	33	70	13	M25X1.5	19	27	0.499
34	3/4"	20	115	100	12	38	80	15	M30X1.5	22	34	0.975



How to Order

Code	Type
FT12515	12



FT12515 Silver Series



Inline Flow Control Valve

Technical Specifications

Type	Working Pressure Bar	Working Temperature	Recommended Max. Flow Rate l/min	Panel Mount Kit
14	210	-20°C to 100°C	15	FT120314
38	210	-20°C to 100°C	30	FT120338
12	210	-20°C to 100°C	50	FT120312
34	210	-20°C to 100°C	80	FT120334

Flow Rate Curves

