

# FT2572 Gold Series



Inline Throttle Valve



## Features

- Pressures to 400 Bar, 5800 PSI.
- Gold series throttle valves are high quality steel construction with a hardened needle and seat and aluminium hand knob. (A plastic hand knob is available as an option.)
- A locking screw in the hand knob enables the adjustment to be secured against vibration or accidental / unauthorised alteration.
- A vernier type calibration between the adjustment knob and the valve body enables repetition of particular settings.
- The capped adjustment knob inhibits the ingress of water and grime, minimising the susceptibility to corrosion and seizing of the spindle while the oil immersed screw thread lends the valve to smooth and accurate adjustment.
- A panel mount kit is available as an option.
- Stainless steel construction is available as an option.

## Dimensional Details

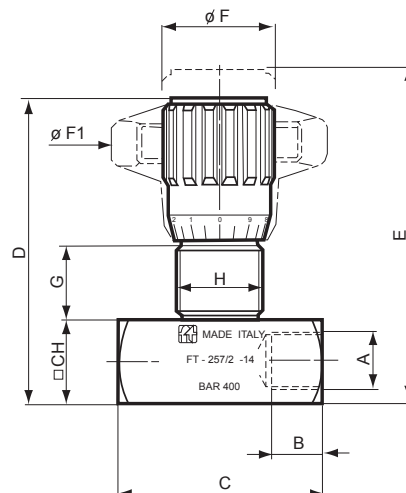
Type	A	B	C	D	E	F	G	H	CH	Weight kg
18	1/8"	8.5	38	59	64	22	15	M17X1	16	0.110
14	1/4"	12.5	48	71	78	27	17	M20X1	20	0.200
38	3/8"	12.5	59	84	93	33	19	M25X1.5	25	0.375
12	1/2"	15.5	68	97	107	38	20	M30X1.5	30	0.600
34	3/4"	17	86	120.5	132.5	47	25	M40X1.5	40	1.250
100	1"	20	105	151.5	167.5	58	34	M50X1.5	50	2.550
114	1-1/4"	22	120	156.5	172.5	58	34	M50X1.5	55	3.000



## How to Order

	Code
Steel	FT2572
Stainless steel	FT22572

Type
18



# FT2572 Gold Series

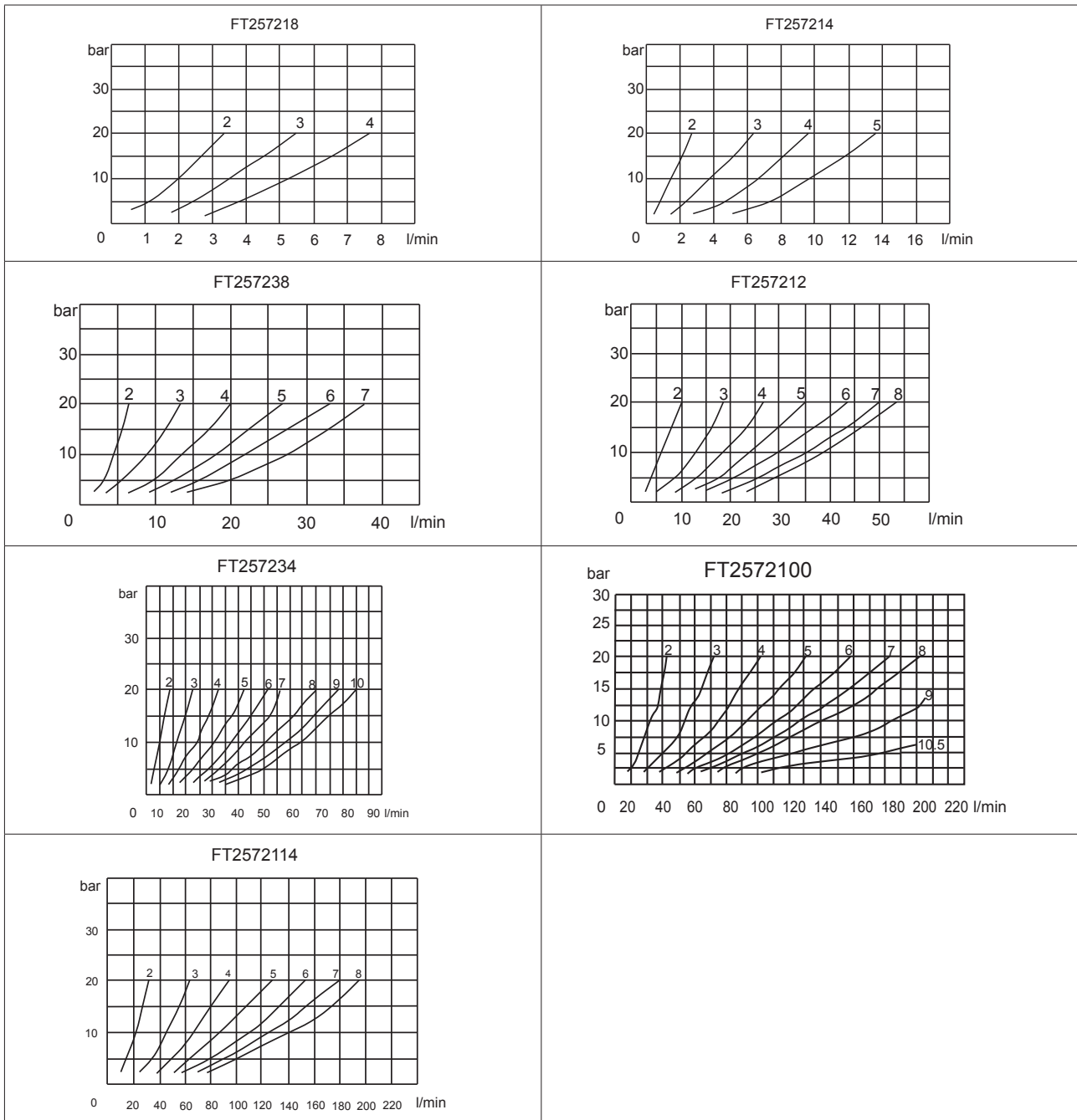


Inline Throttle Valve

## Technical Specifications

Type	Working Pressure Bar	Working Temperature	Recommended Max. Flow Rate l/min	Panel Mount Kit
18	400	-20°C to 100°C	10	FT2023
14	400	-20°C to 100°C	15	FT2024
38	400	-20°C to 100°C	30	FT2025
12	400	-20°C to 100°C	50	FT2026
34	400	-20°C to 100°C	80	FT2028
100	320	-20°C to 100°C	150	FT20210
114	320	-20°C to 100°C	200	FT20210

## Flow Rate Curves



# FT2575 Gold Series



Inline Flow Control Valve

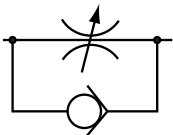


## Features

- Pressures to 400 Bar, 5800 PSI.
- Gold series flow control valves are of high quality steel construction with a hardened needle and seat and aluminium hand knob. (A plastic hand knob is available as an option.)
- A locking screw in the hand knob enables the adjustment to be secured against vibration or accidental / unauthorised alteration.
- A vernier type calibration between the adjustment knob and the valve body enables repetition of particular settings.
- The capped adjustment knob inhibits the ingress of water and grime, minimising the susceptibility to corrosion and seizing of the spindle while the oil immersed screw thread lends the valve to smooth and accurate adjustment.
- A panel mount kit is available as an option.
- Stainless steel construction is available as an option.

## Dimensional Details

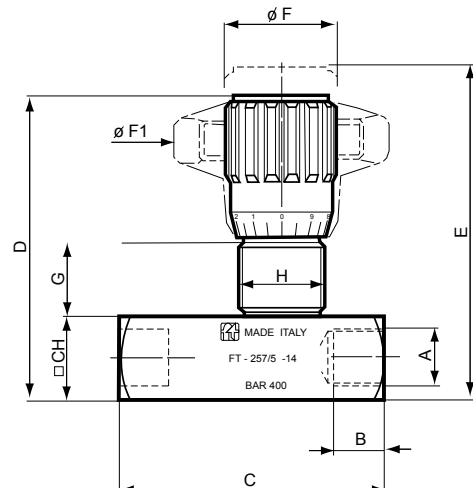
Type	A	B	C	D	E	F	G	H	CH	Weight kg
18	1/8"	9	48	60.5	65.5	21.5	15	M17X1	16	0.130
14	1/4"	12.5	65.5	71.5	78.5	26	17	M20X1	20	0.250
38	3/8"	13.5	79	84.5	93.5	33	19	M25X1.5	25	0.500
12	1/2"	15	94	97	107	37	20	M30X1.5	30	0.750
34	3/4"	17	114	120.5	132.5	46	25	M40X1.5	40	1.600
100	1"	21	138.5	151.5	167.5	56	34	M50X1.5	50	3.050
114	1-1/4"	23	157	156.5	172.5	56	34	M50X1.5	55	3.750



## How to Order

	Code
Steel	FT2575
Stainless steel	FT22575

Type
18



# FT2575 Gold Series



Inline Flow Control Valve

## Technical Specifications

Type	Working Pressure Bar	Working Temperature	Recommended Max. Flow Rate l/min	Panel Mount Kit
18	400	-20°C to 100°C	10	FT2023
14	400	-20°C to 100°C	15	FT2024
38	400	-20°C to 100°C	30	FT2025
12	400	-20°C to 100°C	50	FT2026
34	400	-20°C to 100°C	80	FT2028
100	320	-20°C to 100°C	150	FT20210
114	320	-20°C to 100°C	200	FT20210

## Flow Rate Curves

