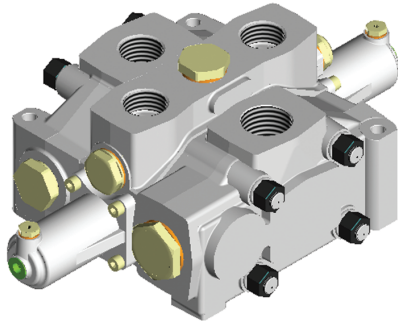


HC-D25 Series

Sectional Directional Control Valve



GENERAL SPECIFICATIONS



Universal products and solutions

HC-D25 control valve belongs to the wide range of Hydrocontrol S.p.A. modular sectional valves and is capable of working with a maximum flow of 380 litres/min. at an operating pressure of 350 bar.

Numerous integrated valve features in addition to countless configuration options make HC-D25 highly flexible and easily adaptable to the widest applications range.

Sections are equipped with auxiliary valves and a wide variety of interchangeable spools.

Standard working conditions

- FLOW RATE **100 GPM**
- PRESSURE RATE **5000 PSI**
- MAX PRESSURE ON (T) **290 PSI**
- OPERATING TEMPERATURE **-25°C / +80°C**
- KINEMATIC VISCOSITY **da 10 a 460 mm²/s**
- CONTAMINATION LEVEL **19/16 ISO 4406**
- FILTRATION LEVEL **β 10 > 75**

Technical specifications

- WORKING SECTION NUMBER **1 - 12**
- SPOOL STROKE **0,47 + 0,47 in**
- SPOOLS PITCH **2,9 in**

Fluid compatibility

TYPE OF FLUID (Oil and Solution)	TEMP. (C°)		GASKET	
	min	max	NBR	VITON(*)
Mineral oil HPL (DIN 51524)	-25	+80	•	•
Oil in water emulsion HFA(*)	+5	+55	•	•
Water in oil emulsion HFB(*)	+5	+55	•	•
Polyglycol-based aqueous sol. HFC(*)	-25	+60	•	
Ester of phosphoric acid HCD(*)	-20	+150		•

(*) : for this application, please contact our technical sales office.

NBR : nitrile rubber compatible with mineral-bases oils ASTIM 1

VITON : fluorinated elastomer for use at high temperature, compatible with fluids ASTIM 1 and ASTIM 3.

Unit of measure - Conversion factors

Systems / Unit	METRIC	BSP
LENGTH	1 mm = 0,0394 in	1 in = 25,4 mm
MASS	1 kg = 2,205 lb	1 lb = 0,4536 kg
FORCE	1 Nm = 0,1020 kgf	1 kgf = 9,8067 Nm
VOLUME	1 l = 0,2200 gal UK 1 i = 0,2642 gal US	1 gal UK = 4,546 l 1 gal US = 3,785 l
PRESSURE	1 bar = 100000 Pa 1 bar = 14,5 psi	1 Pa = 0,00001 bar 1 psi = 0.0689 bar

HC-D25 Series

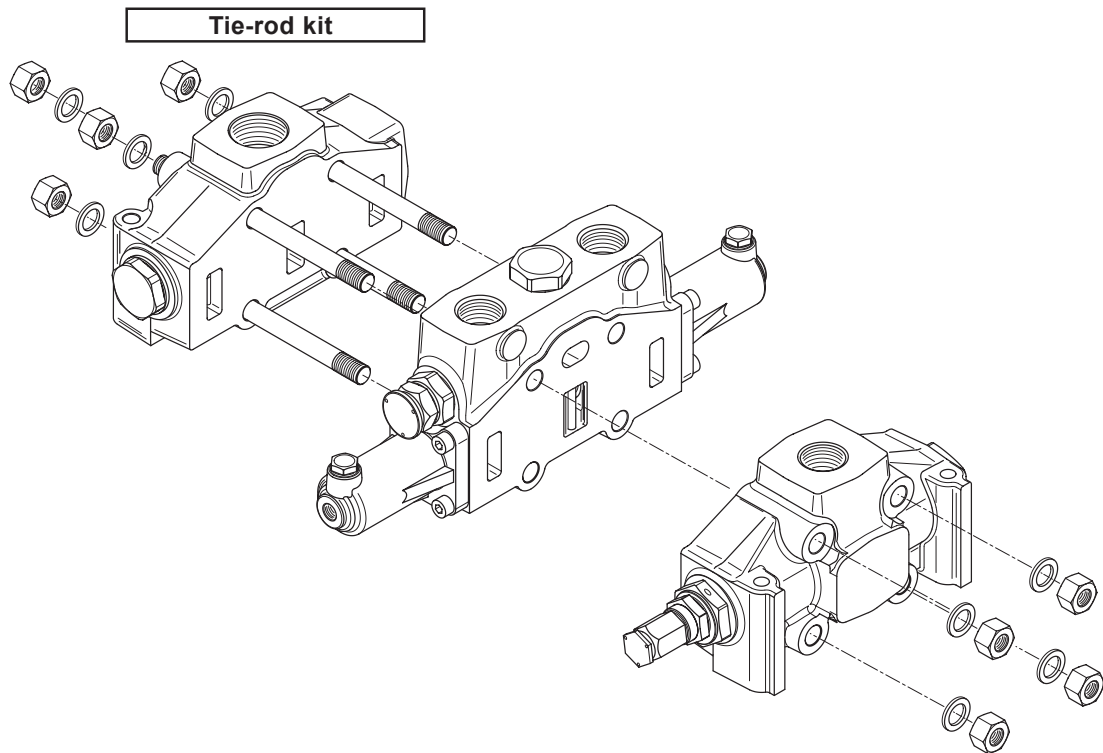
Sectional Directional Control Valve



Order modality

Assembly specifications

Tie rod kit allows the correct assembling of HC-D25. Tie rods length depends on number of sections.



TIE ROD LENGTH

Type	/1	/2	/3	/4	/5	/6	/7	/8	/9	/10	/11	/12
mm	276	350	424	498	572	646	720	794	868	942	1016	1090
in	10,9	13,8	16,7	19,6	22,5	25,4	28,3	31,2	34,1	37	39,9	42,8

Tie-rod clamping torque	110 Nm
	11,22 Kgf

NOTE: each valve is assembled with N° 4 tie rod kits including a tie rod, two nuts and two washers.

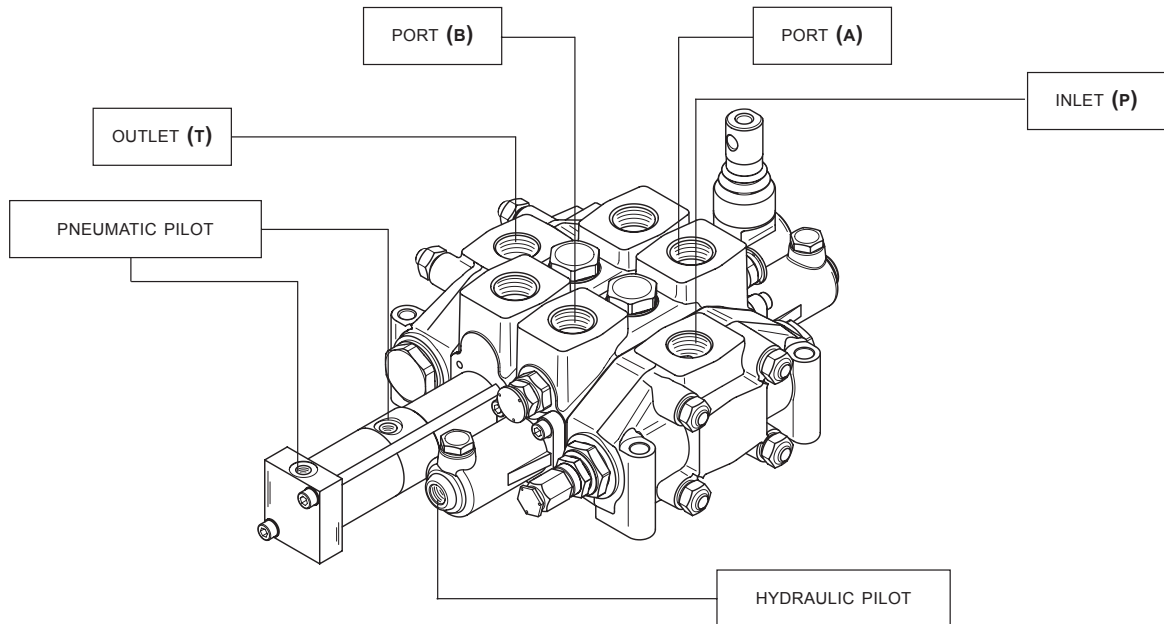
HC-D25 Series

Sectional Directional Control Valve



DIMENSIONS

Standard thread



PORTS	thread (BSP) ISO-228	thread (SAE UN-UNF) ISO-725	thread (METRIC) ISO-262
Inlet (P)	G 1"1/4	1"5/8 - 12 UN	3000-1"1/4(MA) / 3000-1"1/4(UNC)
	G 1"1/2		6000-1"1/4(MA) / 6000-1"1/4(UNC)
Ports A - B	G 1"1/4	1"5/8 - 12 UN	3000-1"1/4(MA) / 3000-1"1/4(UNC)
	G 1"1/2		6000-1"1/4(MA) / 6000-1"1/4(UNC)
Outlet (T)	G 1"1/2	1"5/8 - 12 UN	3000-1"1/2(MA) / 3000-1"1/2(UNC)
Carry-over (HPCO)	G 1"1/2	1"5/8 - 12 UN	6000-1"1/4(MA) / 6000-1"1/4(UNC)
			3000-1"1/2(MA) / 3000-1"1/2(UNC)

PORTS	thread (BSP) ISO-228
Hydraulic pilot	G 1/4
Pneumatic pilot	G 1/8

Ordering codes

1"1/4 BSP G07	1"1/2 BSP G08	1"5/8 - 12 UN U07	SAE 3000 1"1/4 MA S07
SAE 3000 1"1/4 UNC S08	SAE 3000 1"1/2 MA S09	SAE 3000 1"1/2 UNC S10	SAE 6000 1" MA S35
SAE 6000 1" UNC S36	SAE 6000 1"1/4 MA S37	SAE 6000 1"1/4 UNC S38	

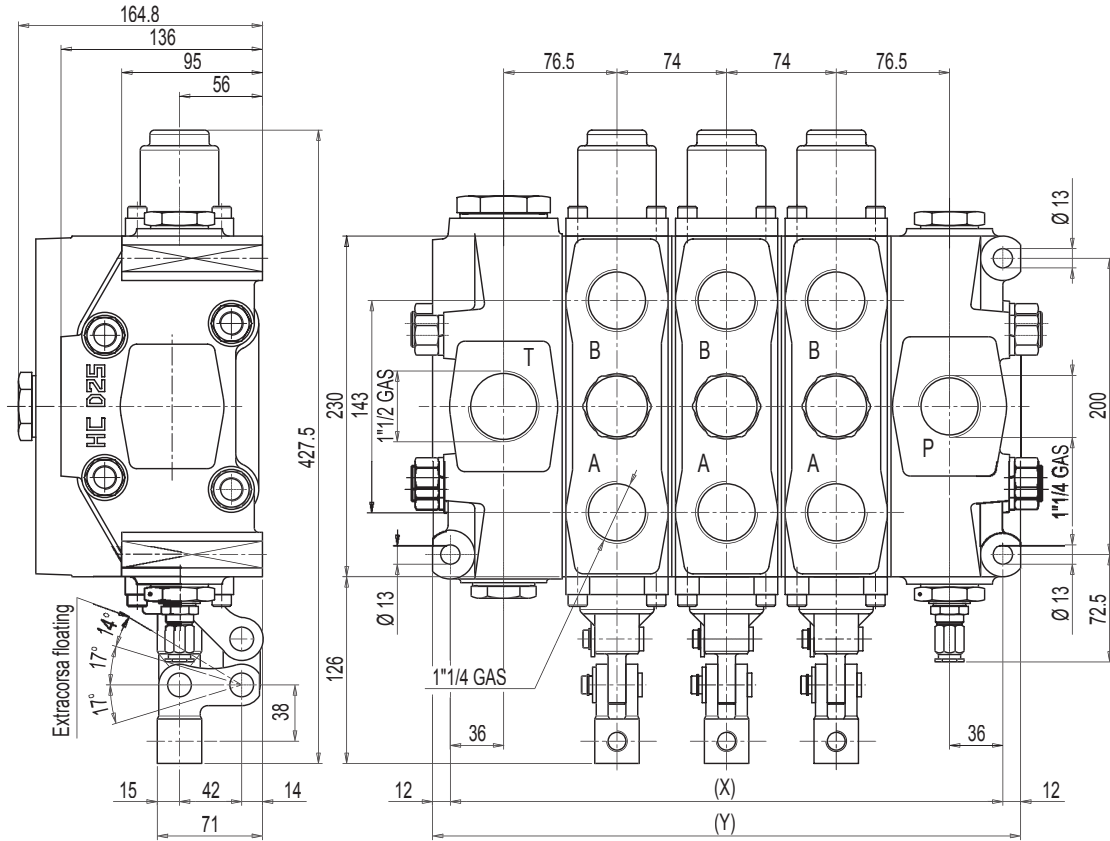
HC-D25 Series

Sectional Directional Control Valve



DIMENSIONS

Dimensional drawing:



VARIABLE DIMENSIONS

Type	/1	/2	/3	/4	/5	/6	/7	/8	/9	/10	/11	/12
X (mm)	225	299	373	447	521	595	669	743	817	891	965	1039
X (in)	8,9	11,8	14,7	17,6	20,5	23,4	25,6	28,5	31,4	34,3	37,2	40,1
Y (mm)	249	323	397	471	545	619	693	767	841	915	989	1063
Y (in)	9,8	12,7	15,6	18,2	21,1	24	26,9	29,8	32,7	35,3	38,2	41,1

WEIGHTS

Type	/1	/2	/3	/4	/5	/6	/7	/8	/9	/10	/11	/12
Kg	41,3	56,8	72,3	87,8	103,4	119	134,4	150	165,5	181	196,5	212
lb	91	125	160	193,5	228	262,4	296,3	330	365	400	433	468

HC-D25 Series

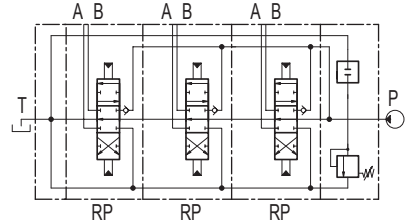
Sectional Directional Control Valve



HYDRAULIC SPECIFICATIONS

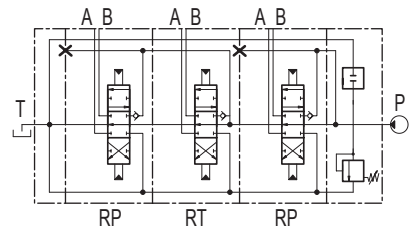
Parallel circuit

When the spool is operated it intercepts the switch gallery by diverting the flow of oil to service ports A or B. If two or more spools are actuated at the same time, the oil will power the service port that has the lower load by selecting the path with the least resistance; by throttling the spools, the flow of oil can be divided between two or more service ports.



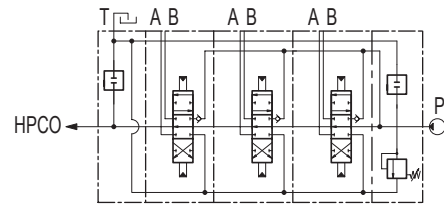
Parallel-Tandem circuit

When the spool is operated it intercepts the switch gallery by diverting the flow of oil to service ports A or B. The tandem circuit is powered by the switch gallery thus permitting the use of just one work section at a time. The section downstream from the tandem section that has been actuated does not operate, the upstream section has priority.



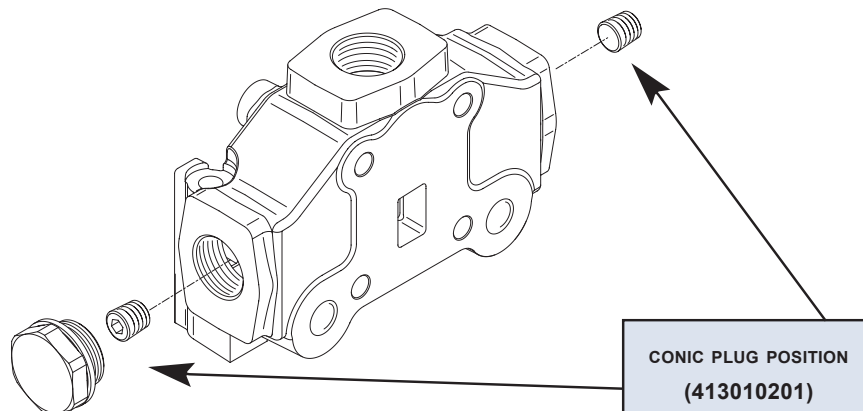
Carry-over connection (HPCO)

This option, available on all HC-D25, allows the monoblock to feed a second valve, by extending the free flow channel. In this configuration, the valve needs a separated port for the connection to tank.



IT IS POSSIBLE TO TRANSFORM SECTIONAL VALVE FROM STANDARD TO HPCO VERSION JUST BY ORDERING THE APPROPRIATE CONIC PLUGS 1/2" x 17 (CODE 413010201)

LAYOUT



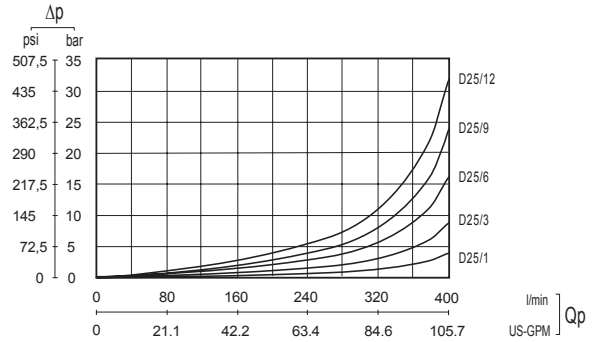
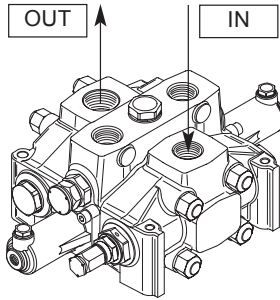
HC-D25 Series

Sectional Directional Control Valve

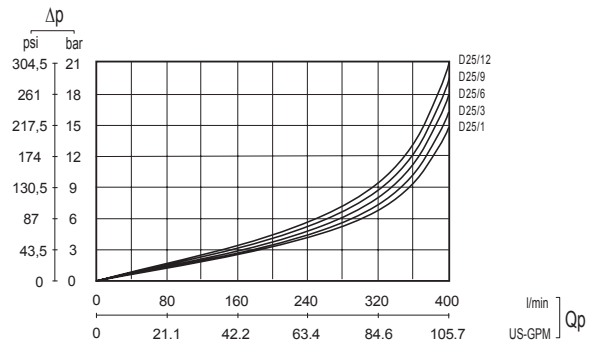
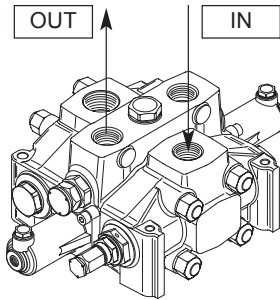


TYPICAL CURVES

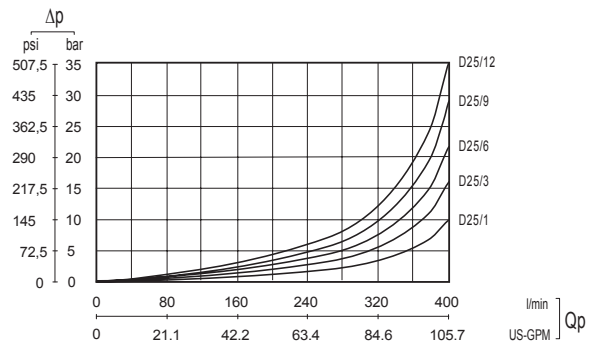
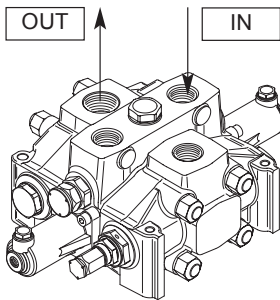
Pressure drop (P - T)



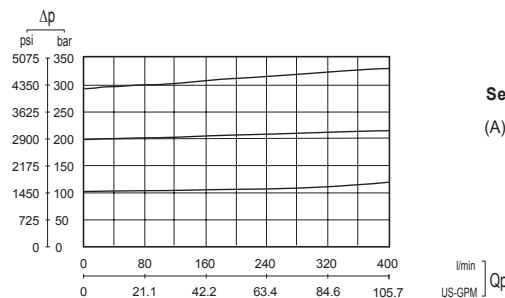
Pressure drop (P - A/B)



Pressure drop (A/B - T)



Pilot relief valve curve



Setting range
(A) = 0 / 350 (bar)

NOTE: indicated values have been tested with standard sectional valve and W001A spools.

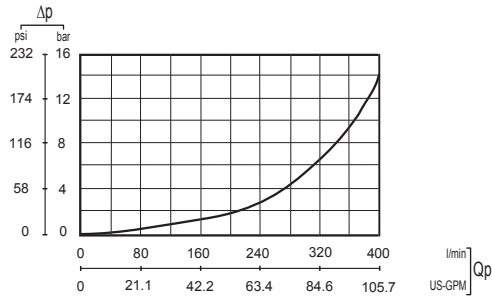
HC-D25 Series

Sectional Directional Control Valve

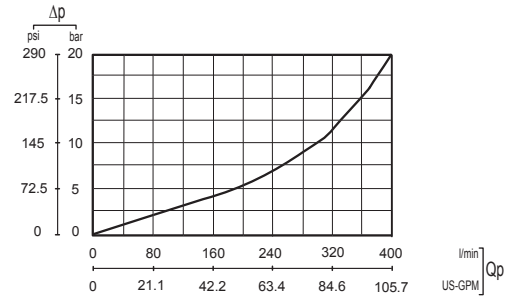


TYPICAL CURVES

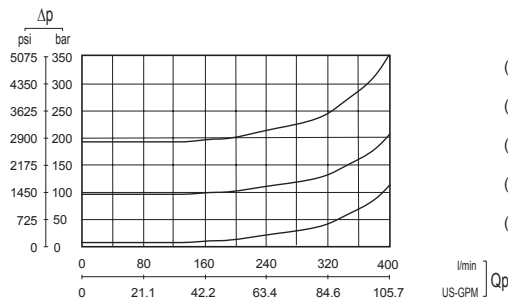
Main anticavitation valve curve



Anticavitation check valve curve



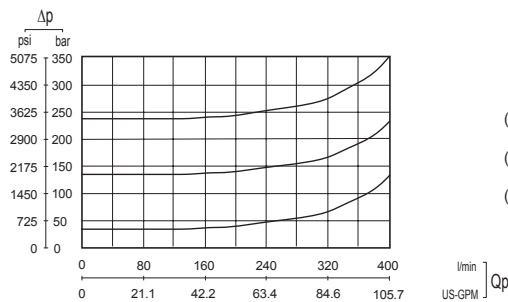
Antishock valve curve



Setting ranges

- (A) = 0 / 70 (at full flow)
0-A / 50-A (at min. flow)
- (B) = 71/120 (at full flow)
51-A / 70-A (at min. flow)
- (C) = 121/150 (at full flow)
71-A / 110-A (at min. flow)
- (D) = 151/300 (at full flow)
111-A / 240-A (at min. flow)
- (E) = 301/350 (at full flow)
241-A / 350-A (at min. flow)

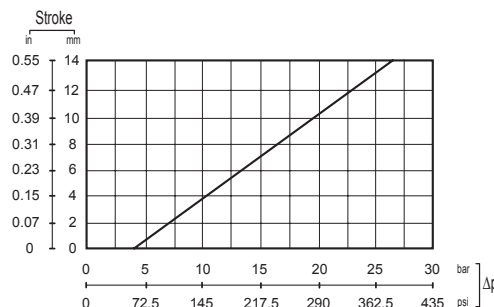
Combined valve curve



Setting ranges

- (A) = 50 / 130 (at full flow)
20-A / 100-A (at min. flow)
- (B) = 131/220 (at full flow)
101-A / 220-A (at min. flow)
- (C) = 221/350 (at full flow)
221-A / 350-A (at min. flow)

Hydraulic pilot control curve



NOTE: the graphic show the spool stroke as a function of the pressure operating.

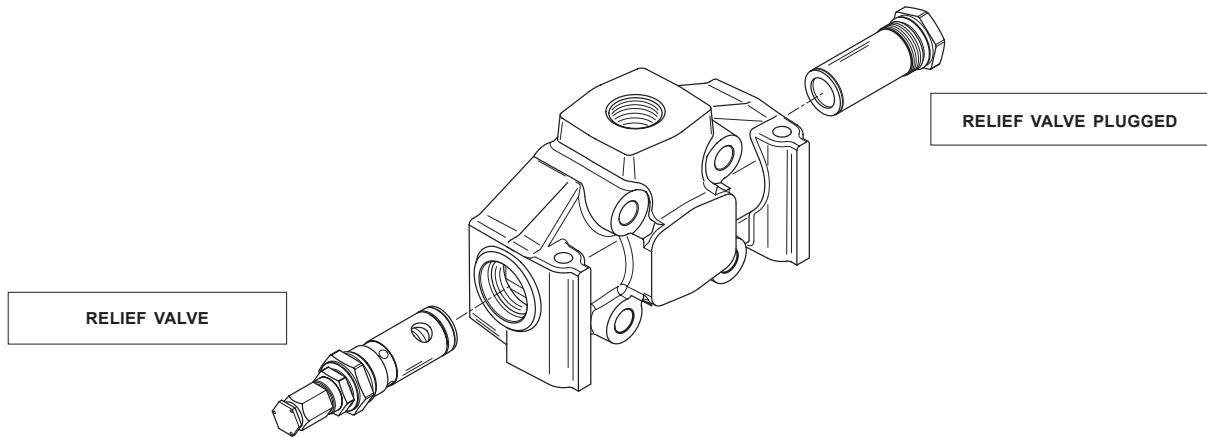
HC-D25 Series

Sectional Directional Control Valve



INLET SECTION

Order example:



- IR** inlet side
- 009** valve arrangement
- (150)** setting direct acting pressure valve
- A G07** inlet and thread position

Inlet side

HYDRAULIC DIAGRAM	LAYOUT	DESCRIPTION + CODE
		<p>LEFT INLET SECTION</p> <p>IL</p>
		<p>RIGHT INLET SECTION</p> <p>IR</p>

HC-D25 Series

Sectional Directional Control Valve



INLET ARRANGEMENT

Valves identification

TYPE	DESIGN	DIAGRAM	DESCRIPTION	TYPE	DESIGN	DIAGRAM	DESCRIPTION
2			Pilot operated pressure relief valve	5			2 stage pilot operated relief valve
3			Relief valve plugged	6			Externally piloted valve
4			Main anticavitation check valve	11			Plug with pressure gauge connection

Valve arrangement on inlet section

Example: **009 = 2A-3B**

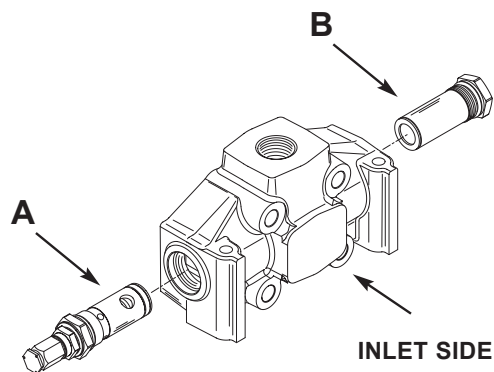
Pressure relief valve in port A side

Plug replaces pressure relief valve in port B side

The code identifies: with a number, the type of valve; with a letter, its position on the inlet section.

(A) = spool action side

(B) = spool return action side



Valves combination

009	010	011	016	018	019	020	021	022	027	029	030	031	032
2A-3B	2A-4B	2A-6B	2A-11B	3A-2B	3A-3B	3A-4B	3A-51B	3A-6B	3A-11B	4A-2B	4A-3B	4A-5B	4A-6B
037	038	039	040	045	047	049	050	052	085	086	087	088	089
4A-11B	5A-13B	5A-4B	5A-6B	5A-11B	6A-2B	6A-4B	6A-5B	6A-11B	11A-2B	11A-3B	11A-4B	11A-5B	11A-6B

HC-D25 Series

Sectional Directional Control Valve



INLET ARRANGEMENT

Inlet and thread available

A	Upper inlet				
	G07	G08	U07	S07	
	S08	S35	S36		
B	Upper inlet - P1 with pressure-gauge connection 1/4" BSP				
	G07	G08	U07	S07	
	S08	S35	S36		
C	Central side inlet				
	G07	G08	U07	S07	
	S08	S35	S36		
D	Central side inlet - P1 with pressure-gauge connection 1/4" BSP				
	G07	G08	U07	S07	
	S08	S35	S36		

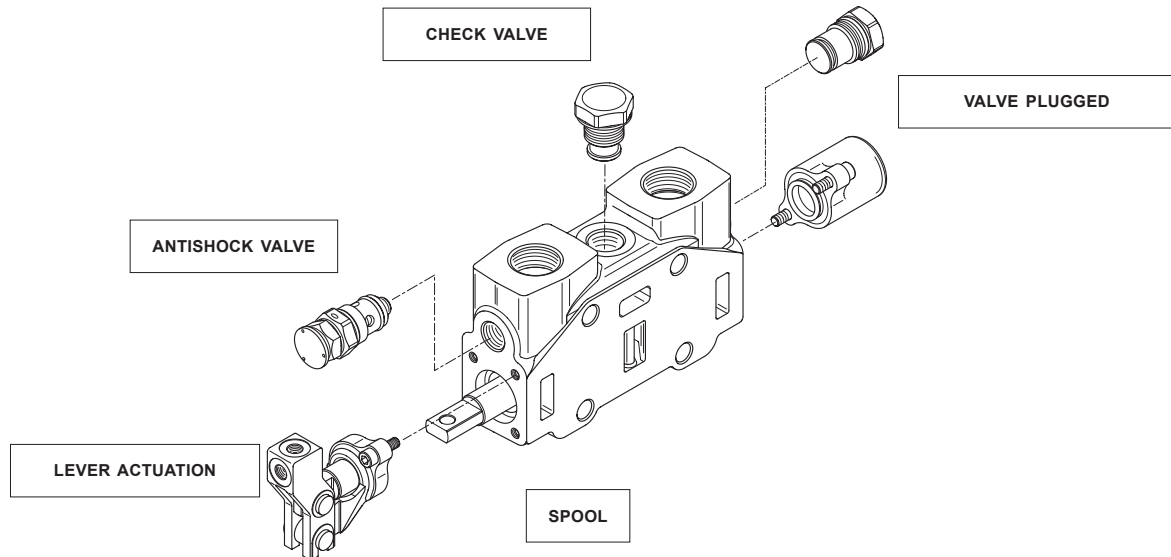
HC-D25 Series

Sectional Directional Control Valve



WORK SECTION

Order example:



- W001A** spool type
- H101** spool actuation type
- F001A** spool return action type
- RP G07** type and thread section
- 01PA** auxiliary valve (port A)
- (120)** setting (port A)
- 05PB** auxiliary valve (port B)

Spools identification

HYDRAULIC SCHEMATIC	CIRCUIT DESCRIPTION	CODE
	3 positions double-acting	W001
	3 positions double-acting A and B to tank	W002
	3 positions double-acting A to tank B blocked	W003
	3 positions double-acting A blocked B to tank	W004

HC-D25 Series

Sectional Directional Control Valve



SPOOL TYPE

Spools identification

	3 positions single-acting on A	W005
	3 positions single-acting on B	W006
	3 positions single-acting on A (A to tank)	W007
	3 positions single-acting on B (B to tank)	W008
	3 positions double-acting with anticavitation valves	W009
	3 positions double-acting switch port closed (A and B blocked)	W010
	3 positions double-acting switch port closed (A and B to tank)	W011
	4 positions double-acting with float in the 4 th position	W012
	3 positions double-acting regenerative	W013
	3 positions double-acting series	W015
	3 positions double-acting series A and B to tank	W016
	3 positions double-acting series A to tank B blocked	W017
	3 positions double-acting series B to tank A blocked	W018

NOTE: W012, and W013 spools need a special machining on the valve body.

HC-D25 Series

Sectional Directional Control Valve



SPOOL TYPE

Spool type

STANDARD

A

METERED

B

Spool identification example:

W001A

Spool 3 positions double-acting
STANDARD

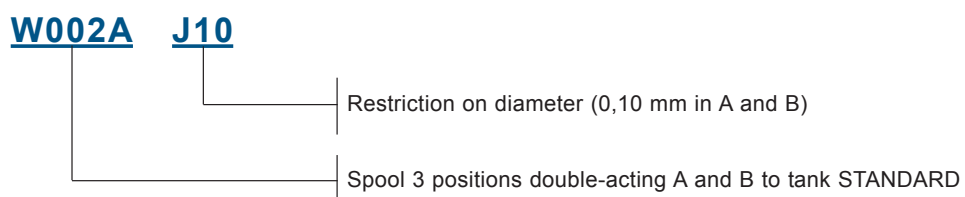
W001B

Spool 3 positions double-acting
METERED

Spools with restricted service ports

HYDRAULIC SCHEMATIC	CIRCUIT	RESTRICTION ON DIAMETER (MM)	CODE	SECTION (MM ²)
	A-B IN T	0,10	J10	4,71
		0,15	J15	7,05
		0,20	J20	9,39
	A IN T	0,10	K10	4,71
		0,15	K15	7,05
		0,20	K20	9,39
	B IN T	0,10	Y10	4,71
		0,15	Y15	7,05
		0,20	Y20	9,39

Order example



HC-D25 Series

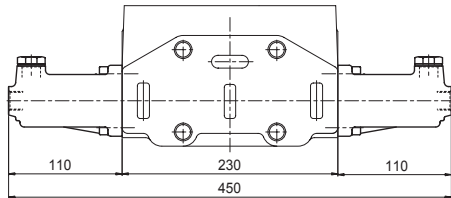
Sectional Directional Control Valve



SPOOL ACTUATION

Spool actuation identification

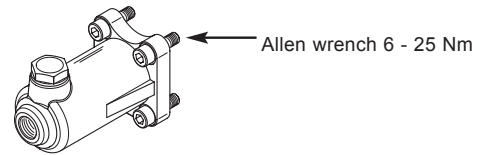
DIMENSIONS



DESCRIPTION

Hydraulic actuation

CLAMPING TORQUE

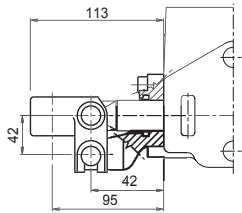


ORDERING CODE

H005

NOTE: leave out the spool return action code

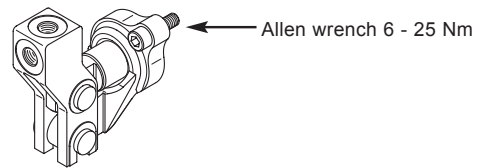
DIMENSIONS



DESCRIPTION

Unprotected lever

CLAMPING TORQUE



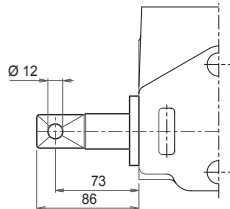
ORDERING CODE

H101

Unprotected lever rotated 180°

H102

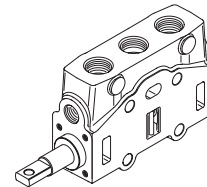
DIMENSIONS



DESCRIPTION

Male clevis end

CLAMPING TORQUE



ORDERING CODE

H117

HC-D25 Series

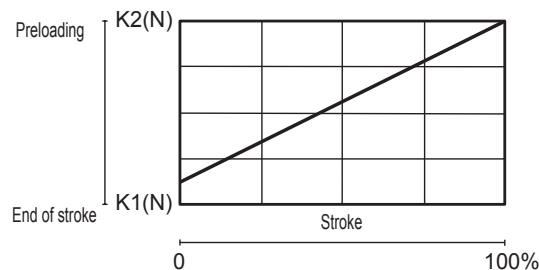
Sectional Directional Control Valve



SPOOL RETURN ACTION

Springs load values

Spool return kits have three different spring types; following the codes depending on spring loads:



STANDARD SPRING

A

Preloading

155 N

End of stroke

373,7 N

SOFT SPRING

B

Preloading

116,7 N

End of stroke

152 N

HEAVY SPRING

C

Preloading

188,3 N

End of stroke

454,2 N

Spool return kit identification example

F001A

3 positions spring-centred spool
(standard spring)

F001B

3 positions spring-centred spool
(soft spring)

F001C

3 positions spring-centred spool
(heavy spring)

HC-D25 Series

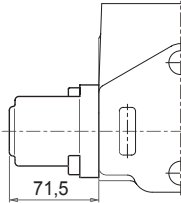
Sectional Directional Control Valve



SPOOL RETURN ACTION

Spools return action identification

DIMENSIONS

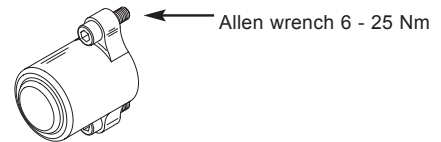


DESCRIPTION

3 positions spring-centred spool



CLAMPING TORQUE



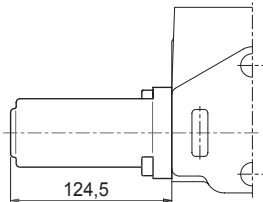
ORDERING CODE

F001A

F001B

F001C

DIMENSIONS

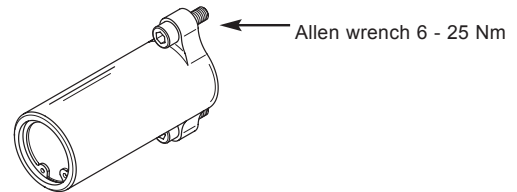


DESCRIPTION

3 positions spring-centred spool
detent in A and B



CLAMPING TORQUE



ORDERING CODE

F002A

3 positions spring-centred spool
detent in A



F003A

3 positions spring-centred spool
detent in B



F004A

4 positions spring-centred spool
detent in 4th position



F005A

only for W012

HC-D25 Series

Sectional Directional Control Valve

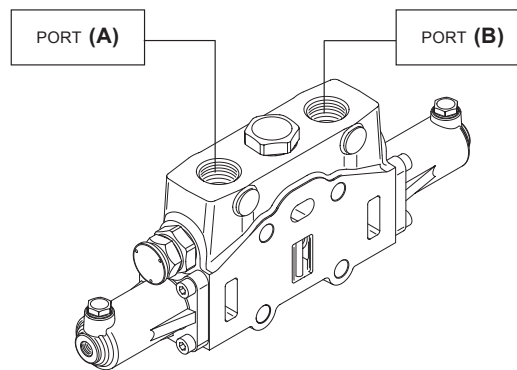


WORK SECTION TYPE

Section work identification

DESCRIPTION	ORDERING CODE
Parallel circuit section	RP
Series circuit section	RS

Thread type

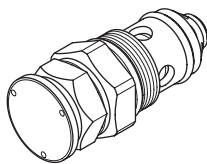


SERVICE PORTS (A - B)

- G07**
G08
U07
S07
S08
G35
S36

Auxiliary valves identification

ANTISHOCK VALVE (ARV)



HYDRAULIC SCHEMATIC



ORDERING CODES

- 01PA**
01PB
- port (A) port (B)

SETTING RANGES (BAR)

Range (A)	Range (B)	Range (C)
0 / 70 (at full flow)	71 / 120 (at full flow)	121 / 150 (at full flow)
0 / 50 (at min. flow)	51 / 70 (at min. flow)	71 / 110 (at min. flow)
Range (D)	Range (E)	
151 / 300 (at full flow)	301 / 350 (at full flow)	
111 / 240 (at min. flow)	241 / 350 (at min. flow)	

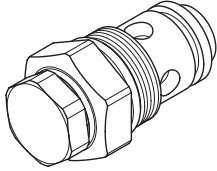
HC-D25 Series

Sectional Directional Control Valve



AUXILIARY VALVES

ANTICAVITATION VALVE



HYDRAULIC SCHEMATIC



ORDERING CODES

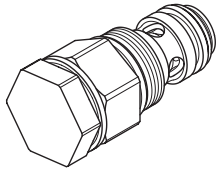
02PA

port (A)

02PB

port (B)

COMBINED VALVE (ORV)



HYDRAULIC SCHEMATIC



ORDERING CODES

03PA

port (A)

03PB

port (B)

SETTING RANGES (BAR)

Range (A)

50 / 130 (at full flow)

20 / 100 (at min.flow)

Range (B)

131 / 220 (at full flow)

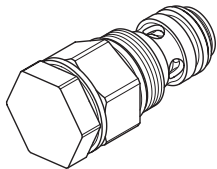
101 / 220 (at min.flow)

Range (C)

221 / 350 (at full flow)

221 / 350 (at min.flow)

PILOT COMBINED VALVE (ORV)



HYDRAULIC SCHEMATIC



ORDERING CODES

04PA

port (A)

04PB

port (B)

SETTING RANGES (BAR)

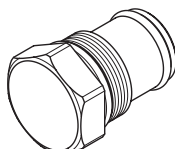
Range (A)

30 / 110 (at full flow)

Range (B)

111 / 350 (at full flow)

PLUGGED VALVE



HYDRAULIC SCHEMATIC



ORDERING CODES

05PA

port (A)

05PB

port (B)

NOTE: sections designed to house auxiliary valve option require double choice on work ports A and B.

Always indicate setting value when using antishock auxiliary valves and combined valves:

SETTING AT FULL FLOW = 01 PA 120

SETTING AT MIN. FLOW = 01 PA 120-A

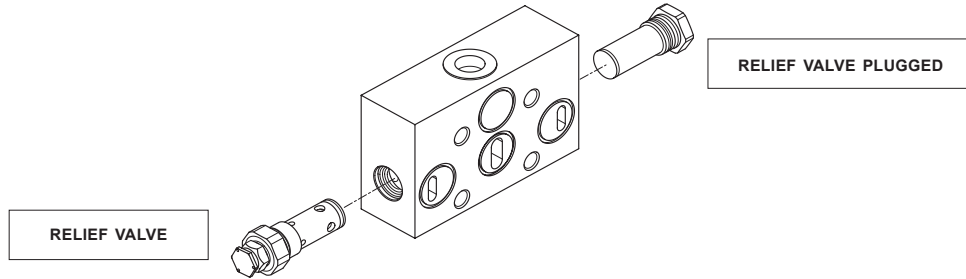
HC-D25 Series

Sectional Directional Control Valve



INTERMEDIATE SECTIONS

Order example:
INTERMEDIATE INLET SECTION



- BE** intermediate inlet section type
- 009** valve arrangement
- (150)** setting direct acting pressure valve
- A G07** inlet and thread position

Classification

HYDRAULIC DIAGRAM	LAYOUT	DESCRIPTION + CODE
		INTERMEDIATE INLET SECTION BE
		INTERMEDIATE SECTION WITH PRESSURE RELIEF VALVE BV*

(*) Omit the code for inlet positioning and type of thread

Operating principle

TYPE E

The intermediate inlet section is driven by two pumps (P+P1). The downstream elements can be set to a lower pressure than those the upstream one by adjusting the pressure relief valve of the intermediate section in question.

TYPE V

The intermediate inlet section and the elements are driven by a single pump (P). The downstream elements can be set to a lower pressure than those the upstream one by adjusting the pressure relief valve of the intermediate section in question.

HC-D25 Series

Sectional Directional Control Valve



INTERMEDIATE SECTIONS

Valves identification

TYPE	DESIGN	DIAGRAM	DESCRIPTION
2			Pilot operated pressure relief valve
3			Relief valve plugged

TYPE	DESIGN	DIAGRAM	DESCRIPTION
4			Main anticavitation check valve
11			Plug with pressure gauge connection

Valve arrangement on inlet intermediate section

Example: **009 = 2A-3B**

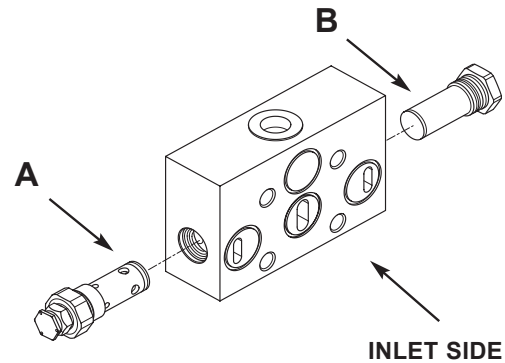
Pressure relief valve in port A side

Plug replaces pressure relief valve in port B side

The code identifies: with a number, the type of valve; with a letter, its position on the inlet section.

(A) = spool action side

(B) = spool return action side



Valves combination

009	010	016	018	019	027	029	030	037	085	086	087	201
2A-3B	2A-4B	2A-11B	3A-2B	3A-3B	3A-11B	4A-2B	4A-3B	4A-11B	11A-2B	11A-3B	11A-4B	1A

HC-D25 Series

Sectional Directional Control Valve

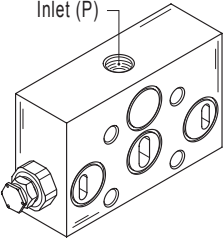


INTERMEDIATE SECTIONS

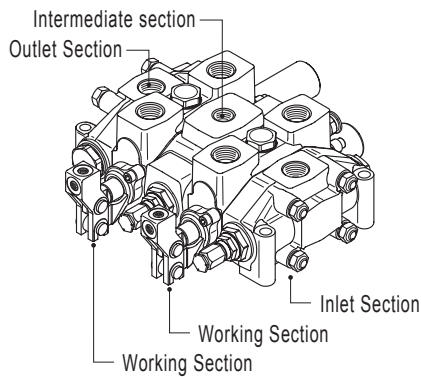
Inlet and thread available

A	G07	G08	U07	S07
	S08	S35	S36	

Upper inlet



Complete configuration samples for HC-D25 with intermediate inlet section (BE)



HC-D25/2

- IR 009 150 A G07 Right inlet section
- W001A H101 F001A RP G07 Working section
- BE 009 120 A G07** Intermediate inlet section
- W001A H101 F001A RP G07 Working section
- TJ A G08 Outlet section

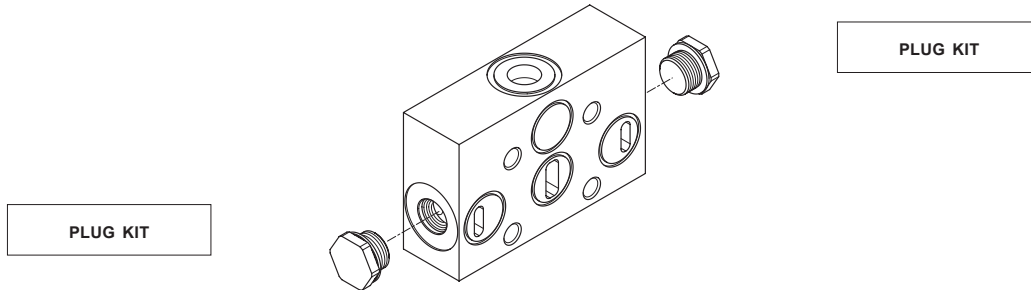
HC-D25 Series

Sectional Directional Control Valve



INTERMEDIATE SECTIONS

Order example:
INTERMEDIATE OUTLET SECTION



BF intermediate outlet section type

A G08 outlet and thread position

Classification

HYDRAULIC DIAGRAM	LAYOUT	DESCRIPTION + CODE
		<p>INTERMEDIATE OUTLET SECTION WITH SINGLE TANK RETURN</p> <p>BF</p>
		<p>INTERMEDIATE OUTLET SECTION WITH TWO TANK RETURNS</p> <p>BG</p>

Operating principle

TYPE F

The above outlet section allows the flow of oil of the two pumps and the tank ports to be piped to a single outlet T.

TYPE G

The section in question allows the flow of oil of the two pumps to be piped in two outlets:

- HPCO for powering another directionale control valve
- T for discharge of the work ports

In order to obtain this, the two T need to be linked.

HC-D25 Series

Sectional Directional Control Valve

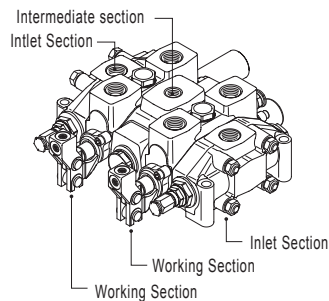


INTERMEDIATE SECTIONS

Outlet and thread available

BF	
A	<p>Upper inlet</p> <p>G08 U07 S09 S10</p>
G	<p>Front outlet side A</p> <p>G08 U07 S09 S10</p>
H	<p>Rear outlet side B</p> <p>G08 U07 S09 S10</p>
BG	
J	<p>Upper outlet HPCO - front side A and rear side B to T</p> <p>G08 U07 S35 S36</p>

Complete configuration samples for HC-D25 with intermediate outlet section (BF)



HC-D25/2

- IR 009 150 A G07.....Right inlet section
- W001A H101 F001A RP G07Working section
- BF A G08**Intermediate inlet section
- W001A H101 F001A RP G07Working section
- IL 009 150 A G07Left inlet section

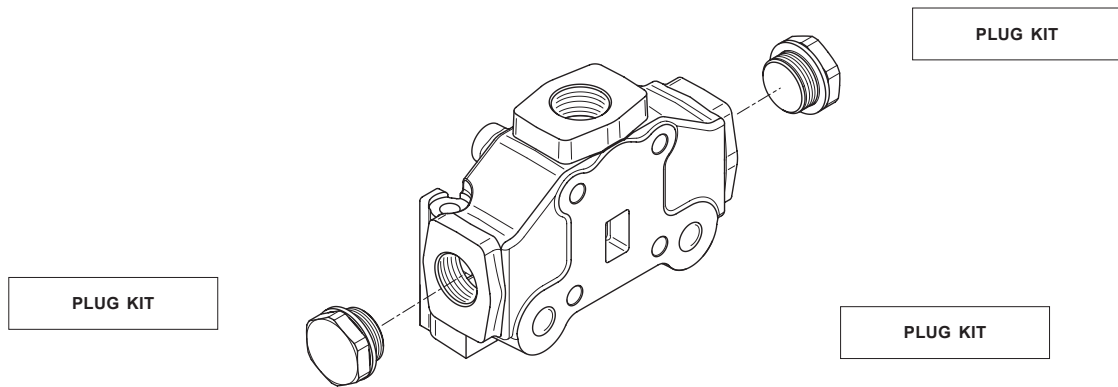
HC-D25 Series

Sectional Directional Control Valve



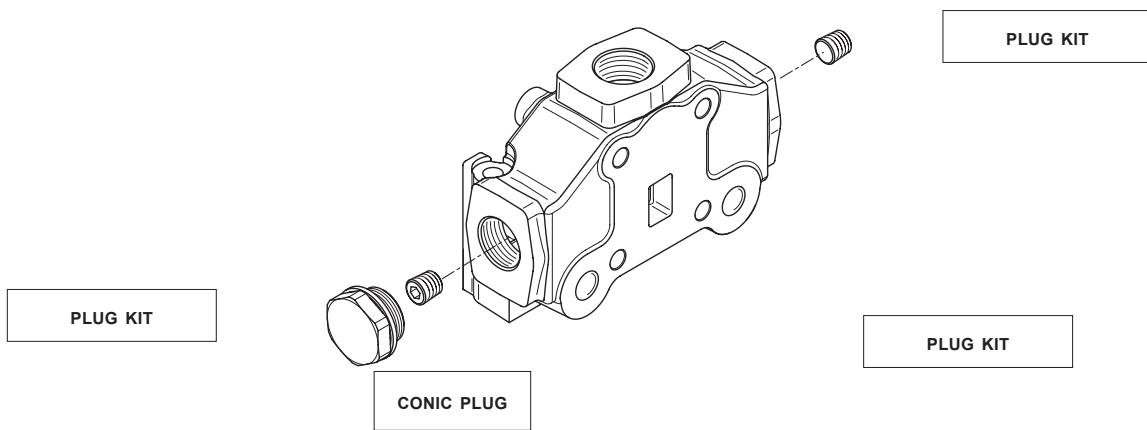
OUTLET SECTION

Order example:
1 outlet



- TJ** outlet side type
- A G08** outlet and thread available

Order example:
HPCO version outlet



- TM** outlet side type
- M G08** outlet and thread available

HC-D25 Series

Sectional Directional Control Valve



OUTLET SECTION

Outlet with single tank classification

HYDRAULIC DIAGRAM	LAYOUT	DESCRIPTION + CODE
		<p>OUTLET SECTION WITH SINGLE RETURN (T) RIGHT-SIDE INLET (P)</p> <p>TJ</p>
		<p>OUTLET SECTION WITH SINGLE RETURN (T) LEFT-SIDE INLET (P)</p> <p>TK</p>

Outlet and thread available

A	Upper inlet	<div style="display: flex; justify-content: space-around;"> <div style="border: 1px solid black; padding: 2px 10px;">G08</div> <div style="border: 1px solid black; padding: 2px 10px;">U07</div> <div style="border: 1px solid black; padding: 2px 10px;">S09</div> <div style="border: 1px solid black; padding: 2px 10px;">S10</div> </div>	
C	Central outlet	<div style="display: flex; justify-content: space-around;"> <div style="border: 1px solid black; padding: 2px 10px;">G08</div> <div style="border: 1px solid black; padding: 2px 10px;">U07</div> <div style="border: 1px solid black; padding: 2px 10px;">S09</div> <div style="border: 1px solid black; padding: 2px 10px;">S10</div> </div>	
G	Front outlet side A	<div style="display: flex; justify-content: space-around;"> <div style="border: 1px solid black; padding: 2px 10px;">G08</div> <div style="border: 1px solid black; padding: 2px 10px;">U07</div> <div style="border: 1px solid black; padding: 2px 10px;">S09</div> <div style="border: 1px solid black; padding: 2px 10px;">S10</div> </div>	<p style="text-align: right; font-weight: bold;">ONLY FOR TK</p>
H	Rear outlet side B	<div style="display: flex; justify-content: space-around;"> <div style="border: 1px solid black; padding: 2px 10px;">G08</div> <div style="border: 1px solid black; padding: 2px 10px;">U07</div> <div style="border: 1px solid black; padding: 2px 10px;">S09</div> <div style="border: 1px solid black; padding: 2px 10px;">S10</div> </div>	<p style="text-align: right; font-weight: bold;">ONLY FOR TJ</p>

HC-D25 Series

Sectional Directional Control Valve



OUTLET SECTION

Outlet with 2 tanks classification

HYDRAULIC DIAGRAM	LAYOUT	DESCRIPTION + CODE
		<p>OUTLET SECTION WITH TWO RETURN RIGHT-SIDED INLET (P)</p> <p style="text-align: center;">TM</p>
		<p>OUTLET SECTION WITH TWO RETURNS LEFT-SIDED INLET (P)</p> <p style="text-align: center;">TN</p>

Outlet and thread available

M	<p>HPCO upper outlet T (TANK) side outlet B</p> <p>G08 U07 S09 S10 S37 S38</p>	<p style="text-align: right;">ONLY FOR TM</p>
N	<p>HPCO upper outlet T (TANK) side outlet A</p> <p>G08 U07 S09 S10 S37 S38</p>	<p style="text-align: right;">ONLY FOR TN</p>
P	<p>HPCO central outlet T (TANK) side outlet B</p> <p>G08 U07 S09 S10 S37 S38</p>	<p style="text-align: right;">ONLY FOR TM</p>
Q	<p>HPCO central outlet T (TANK) side outlet A</p> <p>G08 U07 S09 S10 S37 S38</p>	<p style="text-align: right;">ONLY FOR TN</p>

HC-D25 Series

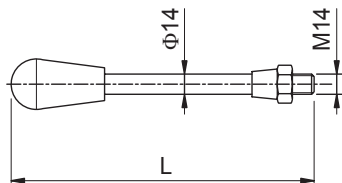
Sectional Directional Control Valve



FEATURES

Lever identification

DIMENSIONS



CLAMPING TORQUE

L (mm) = 350 - 590
 L (in) = 13,8 - 23,2

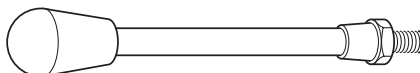
DESCRIPTION

Lever with knob

ORDERING CODE

ZA

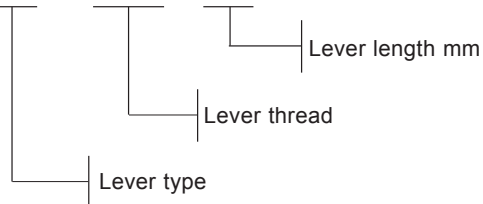
Order example



ZA

M14

350

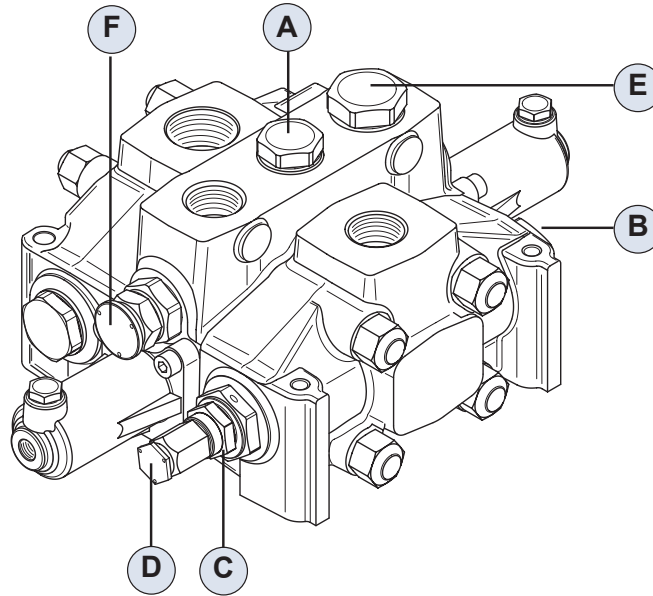


HC-D25 Series

Sectional Directional Control Valve



INSTALLATION AND MAINTENANCE



General clamping torque

POSITION	DESCRIPTION	CLAMPING TORQUE (Nm)
A	load check valve plug	200
B	plug to replace pressure relief valve	350
C	pressure relief valve body	350
D	pressure relief valve cap	20
E	fittings in service ports A-B-P-T	G07 = 300 G08 = 330
F	clamping torque auxiliary valve	see table (X)

TABLE (X)

ANTISHOCK VALVE PLUG 60 Nm	ANTICAVITATION VALVE PLUG 60 Nm	COMBINATED VALVE PLUG 60 Nm
ANTISHOCK VALVE CAP 200 Nm	ANTICAVITATION VALVE CAP 200 Nm	COMBINATED VALVE CAP 200 Nm
PILOT COMBINATED VALVE PLUG 60 Nm	PILOT COMBINATED VALVE CAP 200 Nm	PLUG REPLACES VALVE 200 Nm

HC-D25 Series

Sectional Directional Control Valve



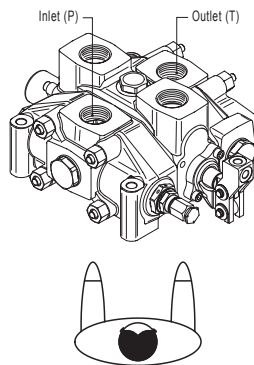
INSTALLATION AND MAINTENANCE

Assembly instructions

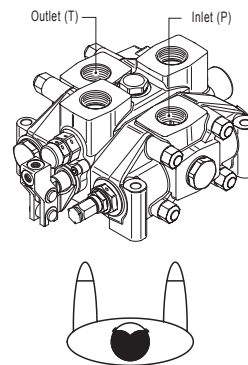
Since our directional control valve casings have symmetrical galleries, they can be converted from right-side inlet (IR) to left-side inlet (IL) simply by turning the spool and relative controls through 180°.

This operation is not possible when using spool types: 012- 013.

Recommended curve for our standard directional control valves **A01** (see remote controls catalogue).



Directional control valve with left inlet (IL)



Directional control valve with right inlet (IR)

Product identification

An identification plate is put on every HC-D25 sectional valve.

