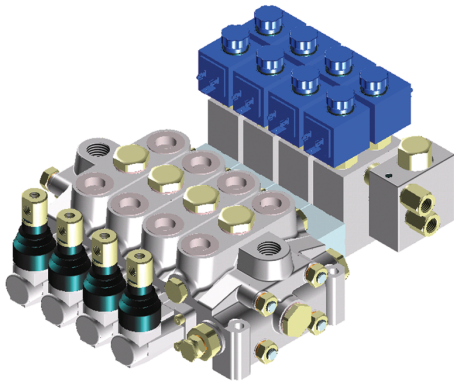


# HC-D4 Series

Sectional Directional Control Valve



## GENERAL SPECIFICATIONS



### Universal products and solutions

HC-D4 control valve belongs to the wide range of Hydrocontrol S.p.A. modular sectional valves and is capable of working with a maximum flow of 80 litres/min. at an operating pressure of 350 bar.

Numerous integrated valve features in addition to countless configuration options make HC-D4 highly flexible and easily adaptable to the widest applications range.

Sections are equipped with auxiliary valves and a wide variety of interchangeable spools.

The possibility to make parallel, tandem and series circuit and different combinations between them, give an answer to every requirement.

### Standard working conditions

- FLOW RATE . . . . . **21 GPM**
- PRESSURE RATE . . . . . **5000 PSI**
- MAX PRESSURE ON (T) . . . . . **290 PSI**
- OPERATING TEMPERATURE . . . . . **-25°C / +80°C**
- KINEMATIC VISCOSITY . . . . . **da 10 a 460 mm<sup>2</sup>/s**
- CONTAMINATION LEVEL . . . . . **19/16 ISO 4406**
- FILTRATION LEVEL . . . . .  **$\beta$  10 > 75**

### Technical specifications

- WORKING SECTION NUMBER . . . . . **1 - 12**
- SPOOL STROKE . . . . . **0,236 + 0,236 in**
- SPOOLS PITCH . . . . . **1,576 in**

### Fluid compatibility

TYPE OF FLUID (Oil and Solution)	TEMP. (C°)		GASKET	
	min	max	NBR	VITON(*)
Mineral oil HPL (DIN 51524)	-25	+80	•	•
Oil in water emulsion HFA(*)	+5	+55	•	•
Water in oil emulsion HFB(*)	+5	+55	•	•
Polyglycol-based aqueous sol. HFC(*)	-25	+60	•	
Ester of phosphoric acid HCD(*)	-20	+150		•

(\*) : for this application, please contact our technical sales office.  
 NBR : nitrile rubber compatible with mineral-bases oils ASTIM 1  
 VITON : fluorinated elastomer for use at high temperature, compatible with fluids ASTIM 1 and ASTIM 3.

### Unit of measure - Conversion factors

Systems / Unit	METRIC	BSP
<b>LENGTH</b>	1 mm = 0,0394 in	1 in = 25,4 mm
<b>MASS</b>	1 kg = 2,205 lb	1 lb = 0,4536 kg
<b>FORCE</b>	1 Nm = 0,1020 kgf	1 kgf = 9,8067 Nm
<b>VOLUME</b>	1 l = 0,2200 gal UK 1 i = 0,2642 gal US	1 gal UK = 4,546 l 1 gal US = 3,785 l
<b>PRESSURE</b>	1 bar = 100000 Pa 1 bar = 14,5 psi	1 Pa = 0,00001 bar 1 psi = 0.0689 bar



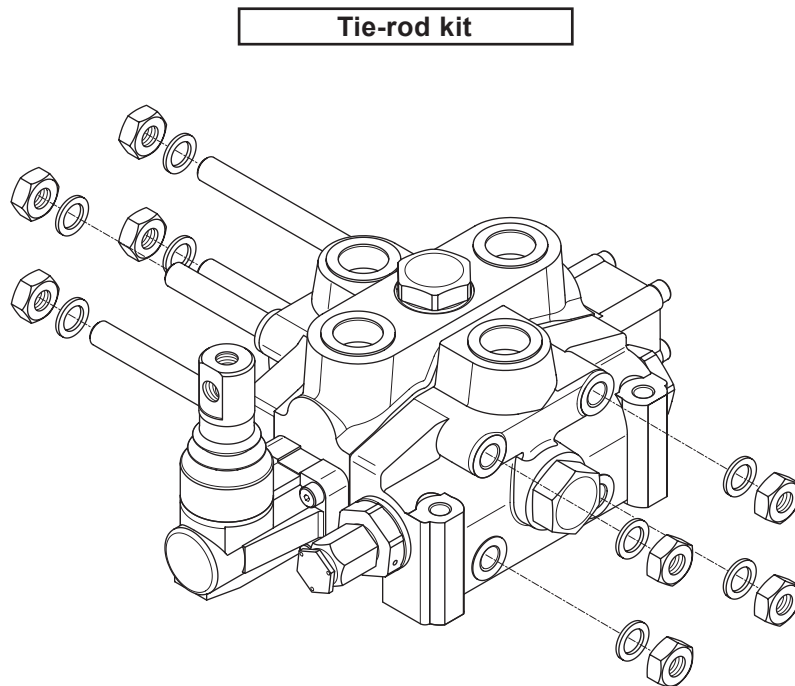
# HC-D4 Series

Sectional Directional Control Valve



## Assembly specifications

Tie rod kit allows the correct assembling of HC-D4. Tie rods length depends on number of sections.



TIE ROD LENGTH (in)

Type	/1	/2	/3	/4	/5	/6	/7	/8	/9	/10	/11	/12
mm	140	180	220	260	300	340	380	420	460	500	540	580
in	5,5	7,1	8,7	10,3	11,9	13,5	14,1	16,7	18,3	19,9	21,5	23,1

Tie-rod clamping torque

35 Nm  
3,6 Kgf

**NOTE:** each valve is assembled with N° 4 tie rod kits including a tie rod, two nuts and two washers.

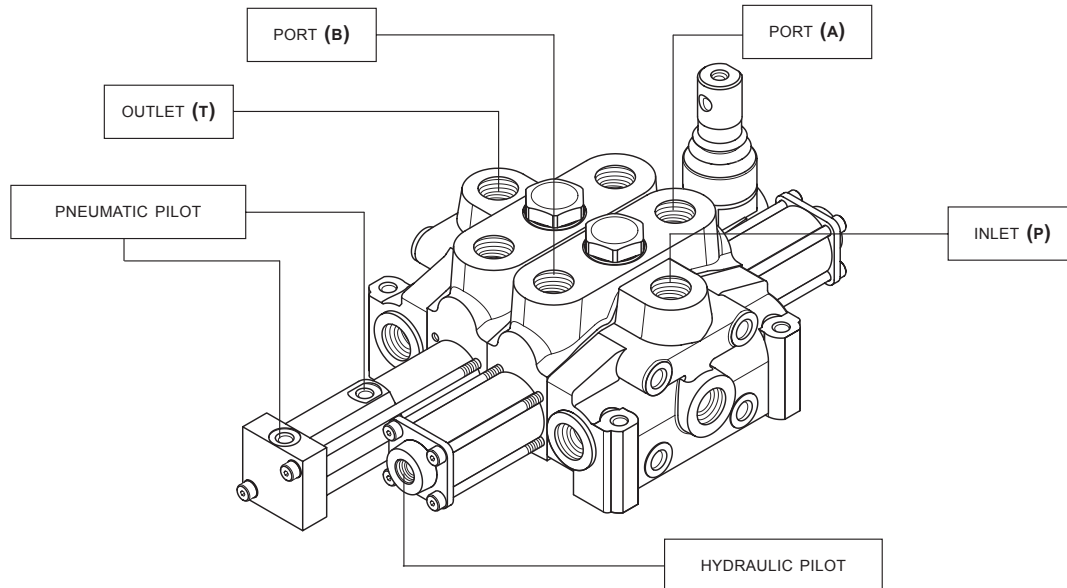
# HC-D4 Series

Sectional Directional Control Valve



## DIMENSIONS

### Standard thread



PORTS	Thread (BSP) ISO-228	Thread (SAE UN-UNF) ISO-725	Thread (METRIC) ISO-262
Inlet P	G 1/2	3/4"-16 UNF / 7/8"-14 UNF	M18 x 1,5
Ports A - B	G 1/2	3/4"-16 UNF / 7/8"-14 UNF	M18 x 1,5
Outlet T	G 1/2	3/4"-16 UNF / 7/8"-14 UNF	M22 x 1,5
Carry-over HPCO	G 1/2	3/4"-16 UNF / 7/8"-14 UNF	M22 x 1,5

PORTS	Thread (BSP) ISO-228
Hydraulic pilot	G 1/4 G 1/4
Pneumatic pilot	G 1/8 G 1/8

### Ordering codes

1/2" BSP

**G04**

3/4"-16 UNF

**U03**

7/8"-14 UNF

**U04**

M18 x 1,5

**M01**

M22 x 1,5

**M02**



# HC-D4 Series

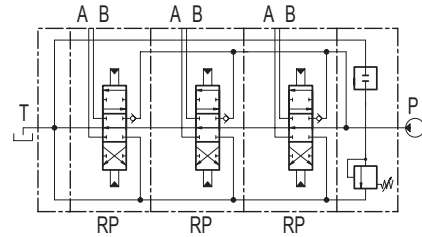
Sectional Directional Control Valve



## HYDRAULIC SPECIFICATIONS

### Parallel circuit

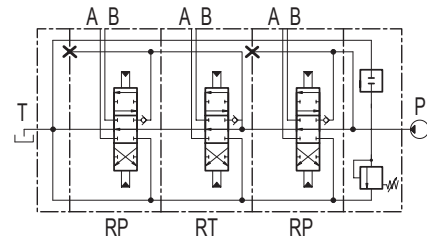
When the spool is operated it intercepts the switch gallery by diverting the flow of oil to service ports A or B. If two or more spools are actuated at the same time, the oil will power the service port that has the lower load by selecting the path with the least resistance; by throttling the spools, the flow of oil can be divided between two or more service ports.



### Parallel-Tandem circuit

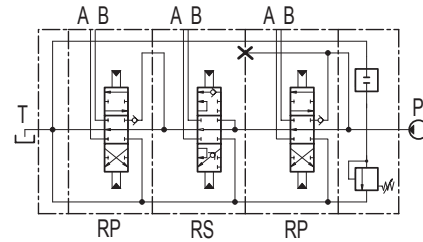
When the spool is operated it intercepts the switch gallery by diverting the flow of oil to service ports A or B.

The tandem circuit is powered by the switch gallery thus permitting the use of just one work section at a time. The section downstream from the tandem section that has been actuated does not operate, the upstream section has priority.



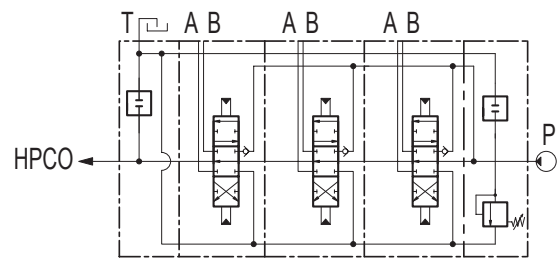
### Series circuit

When the spool is operated it intercepts the switch gallery by diverting the flow of oil to service ports A or B. The oil that flows back from the actuator is carried to the switch gallery thus making it available to the service ports downstream from the series section. The pressure drop downstream is added to the pressure drop of the section itself.



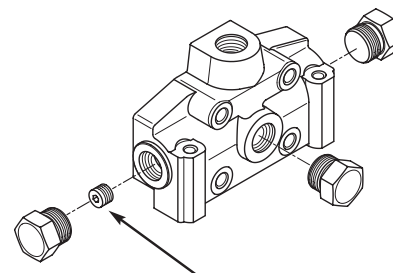
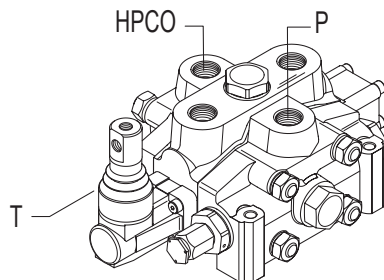
### Carry-over connection (HPCO)

This option, available on all HC-D4, allows the monoblock to feed a second valve, by extending the free flow channel. In this configuration, the valve needs a separated port for the connection to tank.



**IT IS POSSIBLE TO TRANSFORM SECTIONAL VALVE FROM STANDARD TO HPCO VERSION JUST BY ORDERING THE APPROPRIATE CONIC PLUG 1/4" x 13 (CODE 413010203)**

## INLET SECTION WITH HPCO VERSION



CONIC PLUG POSITION  
(413010203)

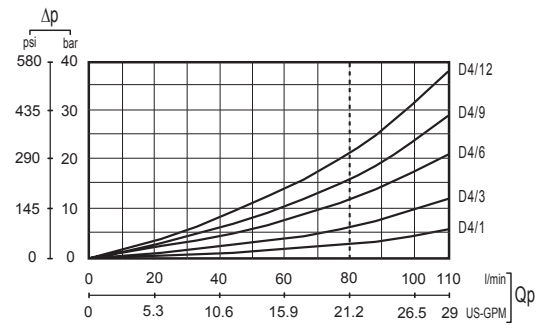
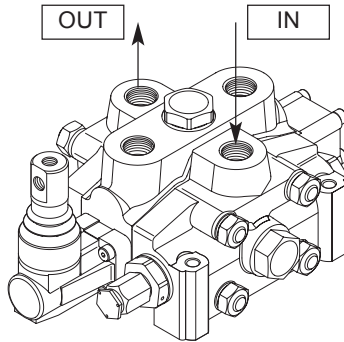
# HC-D4 Series

Sectional Directional Control Valve

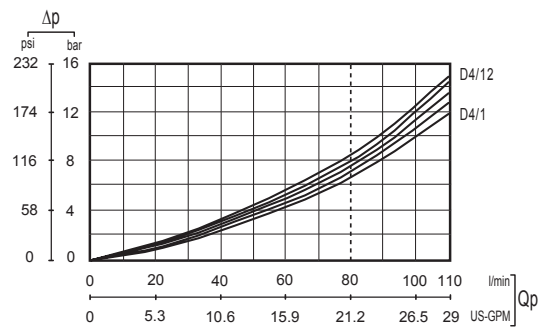
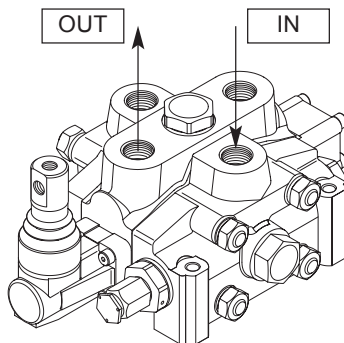


## TYPICAL CURVES

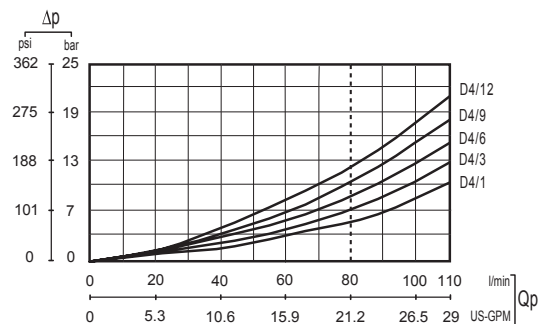
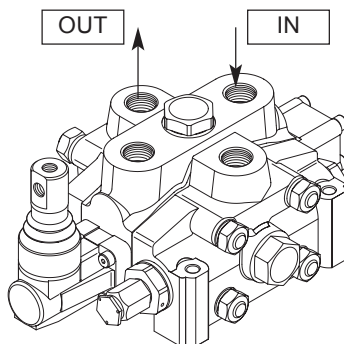
### Pressure drop (P - T)



### Pressure drop (P - A/B)



### Pressure drop (A/B - T)



**NOTE:** indicated values have been tested with standard sectional valve and W001A spools.

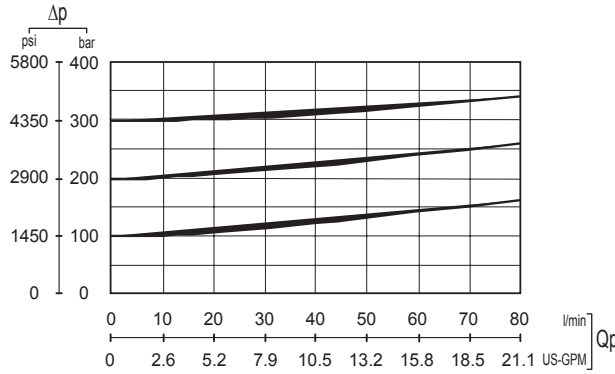
# HC-D4 Series

Sectional Directional Control Valve



## TYPICAL CURVES

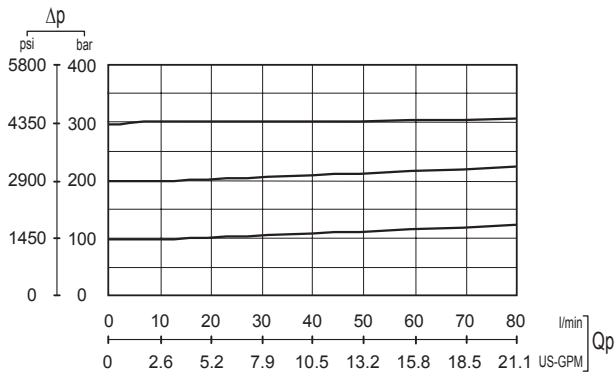
### Direct relief valve curve



#### Setting ranges

- (A) = 120/150 bar
- (B) = 151/200 bar
- (C) = 201/250 bar
- (D) = 251/350 bar

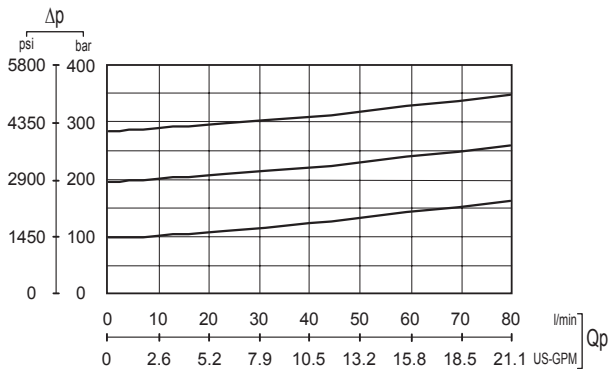
### Pilot operated relief valve curve



#### Setting ranges

- (A) = 30/350 bar

### Antishock valve curve



#### Setting ranges

- (A) = 40/120 - at full flow
- (B) = 121/150 - at full flow
- 25-A / 95-A - at minimum flow
- (C) = 151/250 - at full flow
- 96-A / 220-A - at minimum flow
- (D) = 251/350 - at full flow
- 221-A / 280-A - at minimum flow

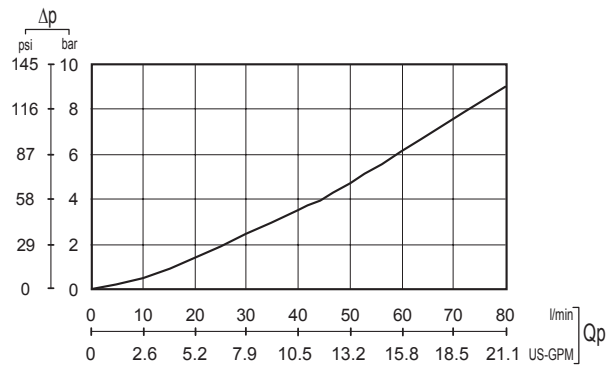
# HC-D4 Series

Sectional Directional Control Valve

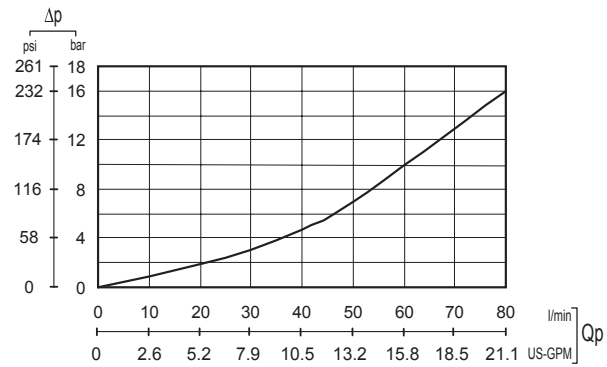


## TYPICAL CURVES

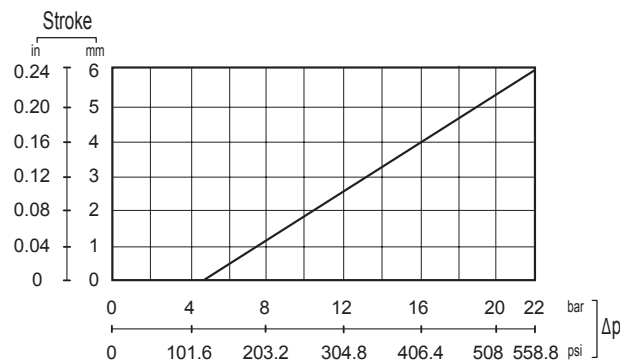
### Main anticavitation valve curve



### Anticavitation check valve curve



### Hydraulic pilot control curve



**NOTE:** the graphic show the spool stroke as a function of the pressure operating.

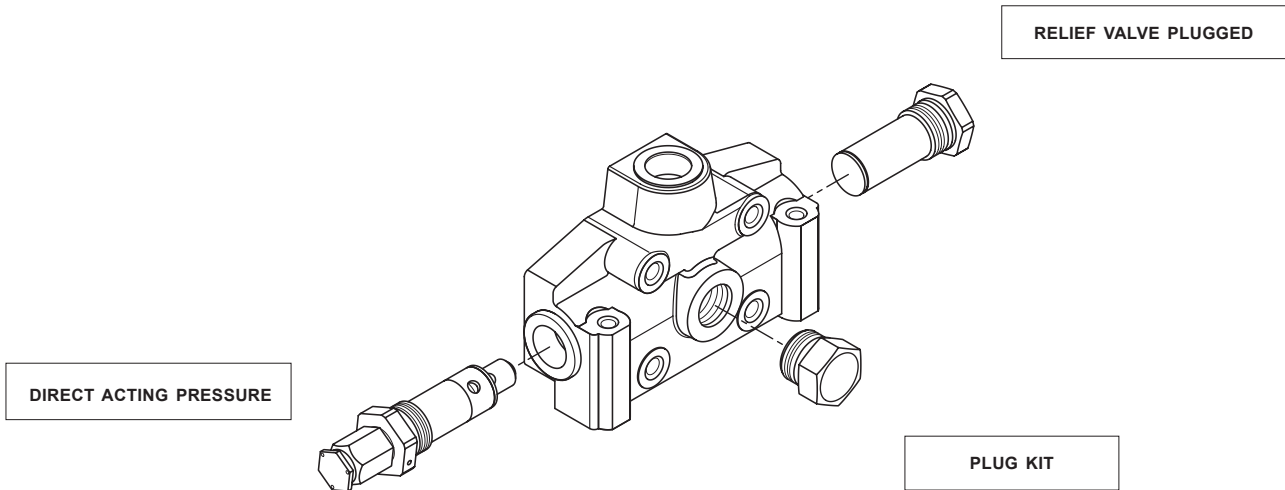
# HC-D4 Series

Sectional Directional Control Valve



## INLET SECTION

Order example:



- IR** inlet side
- 001** valve arrangement
- (150)** setting direct acting pressure valve
- A G04** inlet and thread position

## Inlet side

HYDRAULIC DIAGRAM	LAYOUT	DESCRIPTION + CODE
		<p>LEFT INLET SECTION</p> <p><b>IL</b></p>
		<p>RIGHT INLET SECTION</p> <p><b>IR</b></p>

# HC-D4 Series

Sectional Directional Control Valve



## INLET ARRANGEMENT

### Valves identification

TYPE	DESIGN	DIAGRAM	DESCRIPTION	TYPE	DESIGN	DIAGRAM	DESCRIPTION
1			Direct acting pressure relief valve	7			Solenoid dump valve (12 Vdc)
2			Pilot operated pressure relief valve	8			Solenoid dump valve (24 Vdc)
3			Relief valve plugged	9			Solenoid dump valve (26 Vdc)
4			Main anticavitation check valve	10			Hydraulic lock or brake valve
5			2 stage pilot operated relief valve	11			Plug with pressure gauge connection
6			Externally piloted valve				

### Valve arrangement on inlet section

Example: **009 = 2A-3B**

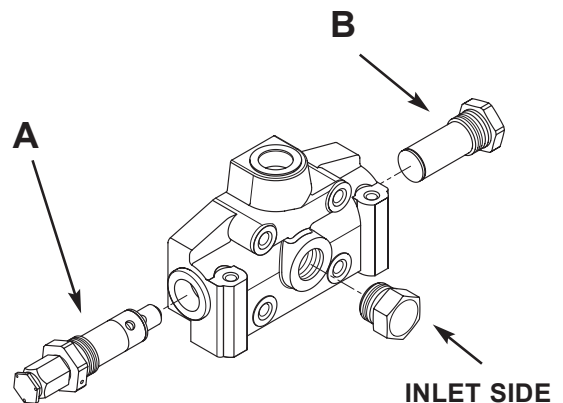
Pressure relief valve in port A side

Plug replaces pressure relief valve in port B side

The code identifies: with a number, the type of valve;

(A) = spool action side

(B) = spool return action side



# HC-D4 Series

Sectional Directional Control Valve

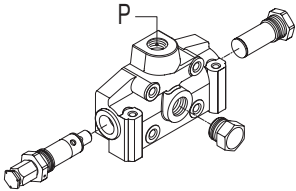
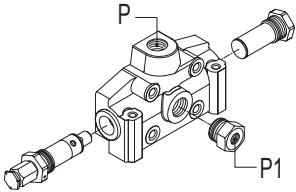
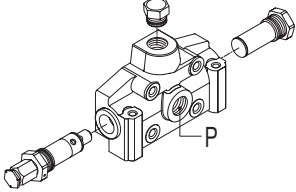
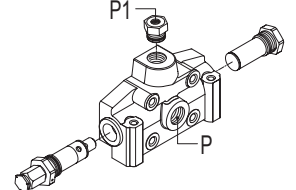


## INLET ARRANGEMENT

### Valves combination

<b>001</b>	<b>002</b>	<b>003</b>	<b>004</b>	<b>005</b>	<b>006</b>	<b>007</b>	<b>008</b>	<b>009</b>	<b>010</b>	<b>011</b>	<b>012</b>	<b>013</b>	<b>014</b>
1A-3B	1A-4B	1A-6B	1A-7B	1A-8B	1A-9B	1A-10B	1A-11B	2A-3B	2A-4B	2A-6B	2A-7B	2A-8B	2A-9B
<b>015</b>	<b>016</b>	<b>017</b>	<b>018</b>	<b>019</b>	<b>020</b>	<b>021</b>	<b>022</b>	<b>023</b>	<b>024</b>	<b>025</b>	<b>026</b>	<b>027</b>	<b>028</b>
2A-10B	2A-11B	3A-1B	3A-2B	3A-3B	3A-4B	3A-5B	3A-6B	3A-7B	3A-8B	3A-9B	3A-10B	3A-11B	4A-1B
<b>029</b>	<b>030</b>	<b>031</b>	<b>032</b>	<b>033</b>	<b>034</b>	<b>035</b>	<b>036</b>	<b>037</b>	<b>038</b>	<b>039</b>	<b>040</b>	<b>041</b>	<b>042</b>
4A-2B	4A-3B	4A-5B	4A-6B	4A-7B	4A-8B	4A-9B	4A-10B	4A-11B	5A-3B	5A-4B	5A-6B	5A-7B	5A-8B
<b>043</b>	<b>044</b>	<b>045</b>	<b>046</b>	<b>047</b>	<b>048</b>	<b>049</b>	<b>050</b>	<b>051</b>	<b>052</b>	<b>053</b>	<b>054</b>	<b>055</b>	<b>056</b>
5A-3B	5A-10B	5A-11B	6A-1B	6A-2B	6A-3B	6A-4B	6A-5B	6A-10B	6A-11B	7A-1B	7A-2B	7A-3B	7A-4B
<b>057</b>	<b>058</b>	<b>059</b>	<b>060</b>	<b>061</b>	<b>062</b>	<b>063</b>	<b>064</b>	<b>065</b>	<b>066</b>	<b>067</b>	<b>068</b>	<b>069</b>	<b>070</b>
7A-5B	7A-10B	7A-11B	8A-1B	8A-2B	8A-3B	8A-4B	8A-5B	8A-10B	8A-11B	9A-1B	9A-2B	9A-3B	9A-4B
<b>071</b>	<b>072</b>	<b>073</b>	<b>074</b>	<b>075</b>	<b>076</b>	<b>077</b>	<b>078</b>	<b>079</b>	<b>080</b>	<b>081</b>	<b>082</b>	<b>083</b>	<b>084</b>
9A-5B	9A-10B	9A-11B	10A-1B	10A-2B	10A-3B	10A-4B	10A-5B	10A-6B	10A-7B	10A-8B	10A-9B	10A-11B	11A-1B
<b>085</b>	<b>086</b>	<b>087</b>	<b>088</b>	<b>089</b>	<b>090</b>	<b>091</b>	<b>092</b>	<b>093</b>					
11A-2B	11A-3B	11A-4B	11A-5B	11A-6B	11A-7B	11A-8B	11A-9B	11A-10B					

### Inlet and thread available

<b>A</b>	Upper inlet	<b>M01</b>	<b>G04</b>	<b>U03</b>	<b>U04</b>	
	Upper inlet - P1 with pressure-gauge connection 1/4" BSP	<b>M01</b>	<b>G04</b>	<b>U03</b>	<b>U04</b>	
<b>C</b>	Central side inlet	<b>M01</b>	<b>G04</b>	<b>U03</b>	<b>U04</b>	
	Central side inlet - P1 with pressure-gauge connection 1/4" BSP	<b>M01</b>	<b>G04</b>	<b>U03</b>	<b>U04</b>	

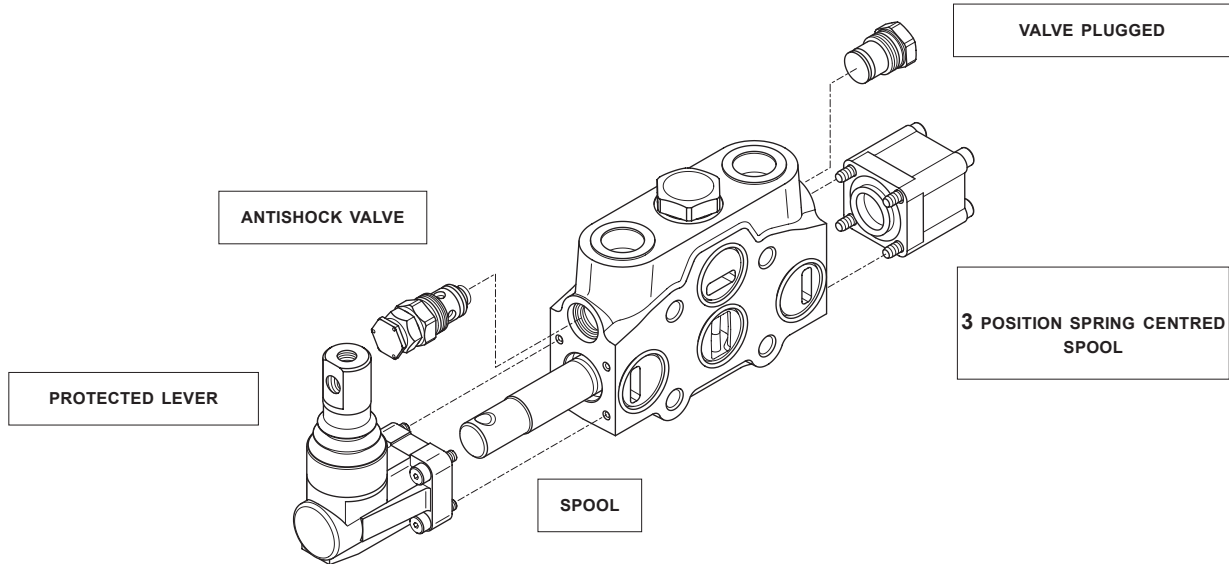
# HC-D4 Series

Sectional Directional Control Valve



## WORK SECTION

Order example:



- W001A** spool type
- H001** spool actuation type
- F001A** spool return action type
- RP G04** type and thread section
- 01PA** auxiliary valve (port A)
- (120)** setting (port A)
- 05PB** auxiliary valve (port B)

## Spools identification

HYDRAULIC SCHEMATIC	CIRCUIT DESCRIPTION	CODE
	3 positions double-acting	<b>W001</b>
	3 positions double-acting A and B to tank	<b>W002</b>
	3 positions double-acting A to tank B blocked	<b>W003</b>
	3 positions double-acting A blocked B to tank	<b>W004</b>

# HC-D4 Series

Sectional Directional Control Valve



## SPOOL TYPE

### Spools identification

	3 positions single-acting on A	<b>W005</b>
	3 positions single-acting on B	<b>W006</b>
	3 positions single-acting on A (A to tank)	<b>W007</b>
	3 positions single-acting on B (B to tank)	<b>W008</b>
	3 positions double-acting with anticavitation valves	<b>W009</b>
	3 positions double-acting switch port closed (A and B blocked)	<b>W010</b>
	3 positions double-acting switch port closed (A and B to tank)	<b>W011</b>
	4 positions double-acting with float in the 4 <sup>th</sup> position	<b>W012</b>
	3 positions double-acting regenerative	<b>W013</b>
	4 position double-acting regenerative in 4th position	<b>W014</b>
	3 positions double-acting series	<b>W015</b>
	3 positions double-acting series A and B to tank	<b>W016</b>
	3 positions double-acting series A to tank B blocked	<b>W017</b>
	3 positions double-acting series B to tank A blocked	<b>W018</b>

**NOTE:** W012, W013 and W014 spools need a special machining on the valve body.

# HC-D4 Series

Sectional Directional Control Valve



## SPOOL TYPE

### Spool type

STANDARD

**A**

METERED

**B**

### Spool identification example:

**W001A**

Spool 3 positions double-acting  
STANDARD

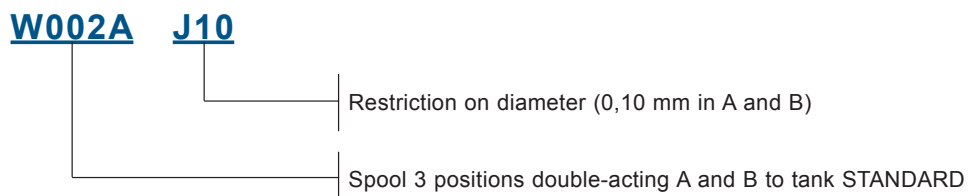
**W001B**

Spool 3 positions double-acting  
METERED

### Spools with restricted service ports

HYDRAULIC SCHEMATIC	CIRCUIT	RESTRICTION ON DIAMETER (MM)	CODE	SECTION (MM <sup>2</sup> )
	A-B IN T	0,10	<b>J10</b>	2,82
		0,15	<b>J15</b>	4,22
		0,20	<b>J20</b>	5,62
	A IN T	0,10	<b>K10</b>	2,82
		0,15	<b>K15</b>	4,22
		0,20	<b>K20</b>	5,62
	B IN T	0,10	<b>Y10</b>	2,82
		0,15	<b>Y15</b>	4,22
		0,20	<b>Y20</b>	5,62

### Order example



# HC-D4 Series

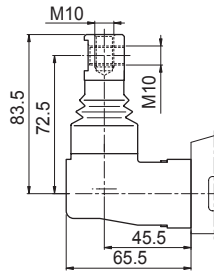
Sectional Directional Control Valve



## SPOOL ACTUATION

### Spool actuation identification

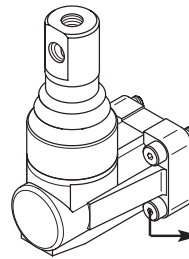
#### DIMENSIONS



#### DESCRIPTION

Protected lever

#### CLAMPING TORQUE



Allen wrench 4 - 6 Nm

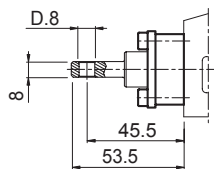
#### ORDERING CODE

**H001**

Protected lever rotated 180°

**H002**

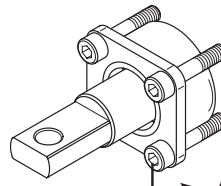
#### DIMENSIONS



#### DESCRIPTION

Control without lever

#### CLAMPING TORQUE

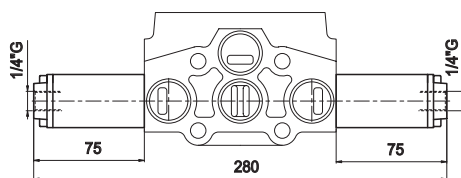


Allen wrench 4 - 6 Nm

#### ORDERING CODE

**H004**

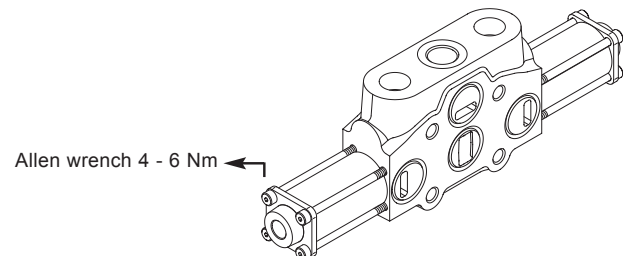
#### DIMENSIONS



#### DESCRIPTION

Hydraulic actuation

#### CLAMPING TORQUE



Allen wrench 4 - 6 Nm

#### ORDERING CODE

**H005**

**NOTE:** leave out the spool return action code

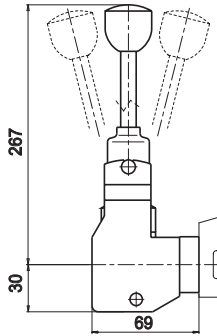
# HC-D4 Series

Sectional Directional Control Valve



## SPOOL ACTUATION

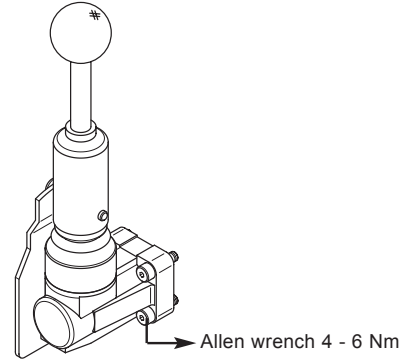
### DIMENSIONS



### DESCRIPTION

Protected vertical safety lever

### CLAMPING TORQUE



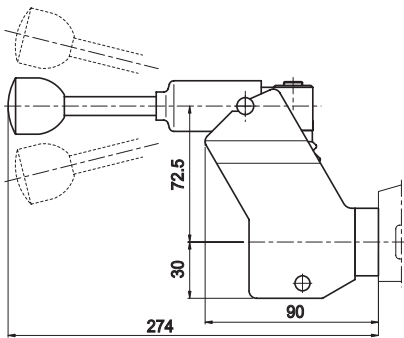
### ORDERING CODE

**H015**

Protected vertical safety lever rotated 180°

**H016**

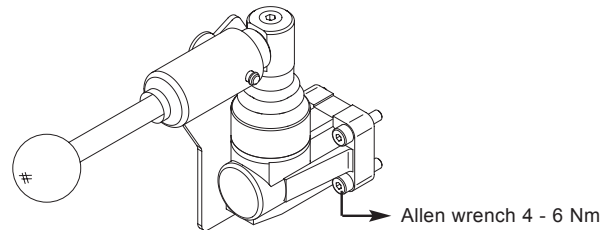
### DIMENSIONS



### DESCRIPTION

Protected horizontal safety lever

### CLAMPING TORQUE



### ORDERING CODE

**H017**

Protected horizontal safety lever rotated 180°

**H018**

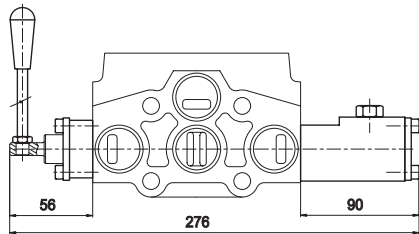
# HC-D4 Series

Sectional Directional Control Valve



## SPOOL ACTUATION

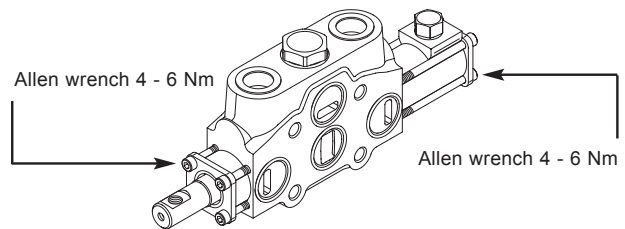
### DIMENSIONS



### DESCRIPTION

180° rotary control

### CLAMPING TORQUE

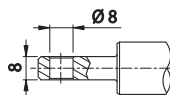


### ORDERING CODE

**H114**

## Spool actuation identification

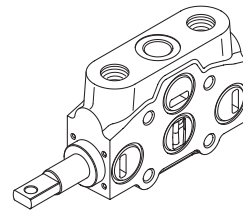
### DIMENSIONS



### DESCRIPTION

Male clevis end

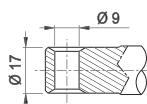
### CLAMPING TORQUE



### ORDERING CODE

**H117**

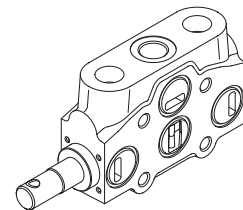
### DIMENSIONS



### DESCRIPTION

Pin hole end

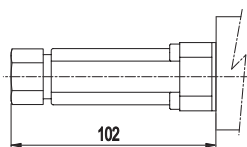
### CLAMPING TORQUE



### ORDERING CODE

**H118**

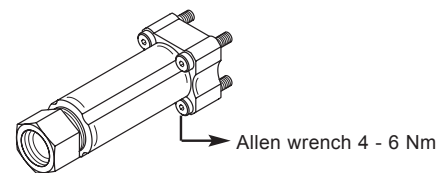
### DIMENSIONS



### DESCRIPTION

Prearrangement actuation cable (fast connection)

### CLAMPING TORQUE



### ORDERING CODE

**H128**

# HC-D4 Series

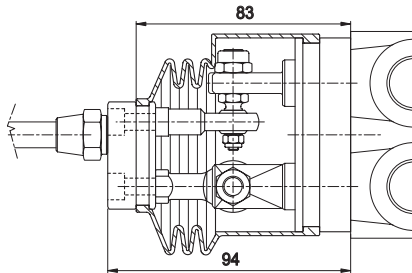
Sectional Directional Control Valve



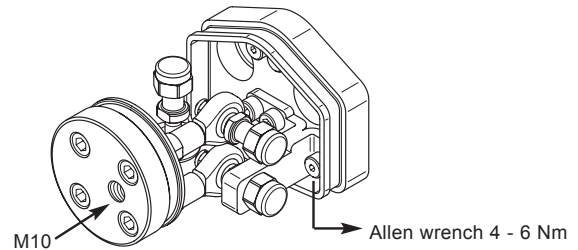
## SPOOL ACTUATION

### Joystick control identification

#### DIMENSIONS



#### CLAMPING TORQUE



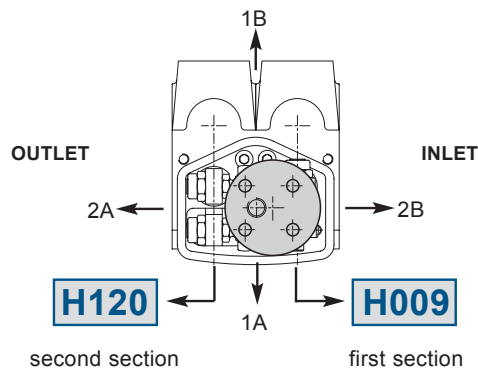
**NOTE:** lever has to be ordered separately

### Fulcrum side

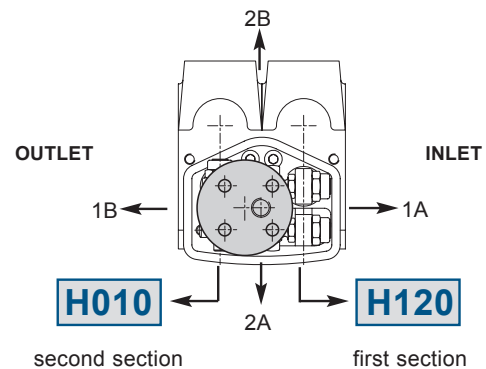
RIGHT SIDE INLET, FULCRUM ON 1st SECTION  
(compulsory code for second section: H120)

RIGHT SIDE INLET, FULCRUM ON 2nd SECTION  
(compulsory code for first section: H120)

#### ORDERING CODE



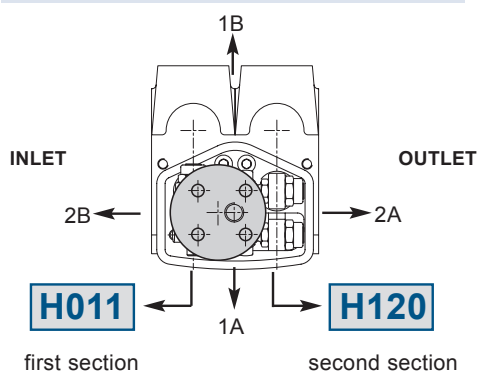
#### ORDERING CODE



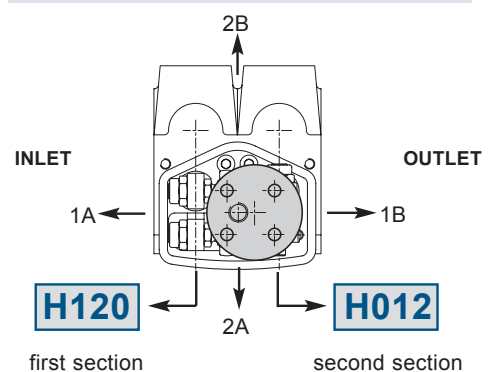
LEFT SIDE INLET, FULCRUM ON 1st SECTION  
(compulsory code for second section: H120)

LEFT SIDE INLET, FULCRUM ON 2nd SECTION  
(compulsory code for first section: H120)

#### ORDERING CODE



#### ORDERING CODE



# HC-D4 Series

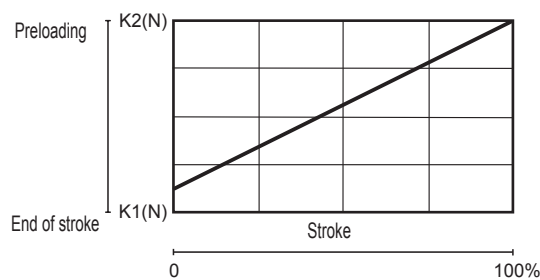
Sectional Directional Control Valve



## SPOOL RETURN ACTION

### Springs load values

Spool return kits have three different spring types; following the codes depending on spring loads:



#### STANDARD SPRING

**A**

Preloading

**117,7 N**

End of stroke

**145,2 N**

#### SOFT SPRING

**B**

Preloading

**101 N**

End of stroke

**117,7 N**

#### HEAVY SPRING

**C**

Preloading

**172,6 N**

End of stroke

**246,2 N**

### Spool return kit identification example

**F001A**

*3 positions spring-centred spool  
(standard spring)*

**F001B**

*3 positions spring-centred spool  
(soft spring)*

**F001C**

*3 positions spring-centred spool  
(heavy spring)*

# HC-D4 Series

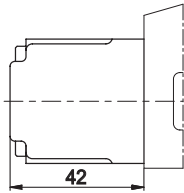
Sectional Directional Control Valve



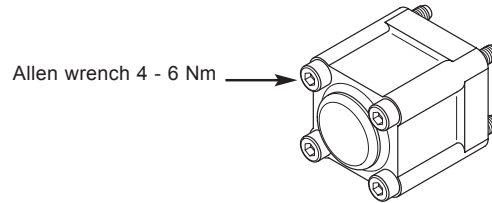
## SPOOL RETURN ACTION

### Spools return identification

#### DIMENSIONS



#### CLAMPING TORQUE



#### DESCRIPTION

3 positions spring-centred spool



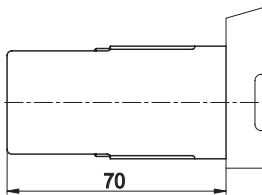
#### ORDERING CODES

**F001A**

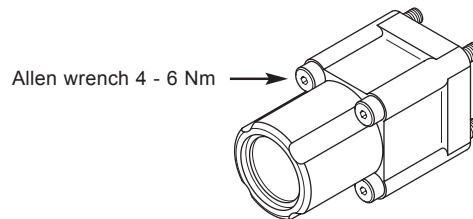
**F001B**

**F001C**

#### DIMENSIONS



#### CLAMPING TORQUE



#### DESCRIPTION

3 positions spring-centred spool  
detent in A and B



#### ORDERING CODES

**F002A**

3 positions spring-centred spool  
detent in A



**F003A**

3 positions spring-centred spool  
detent in B



**F004A**

4 positions spring-centred spool  
detent in 4<sup>th</sup> position



**F005A**

(only for W012)

4 positions spring-centred spool  
detent in 4<sup>th</sup> position



**F006A**

(only for W014)

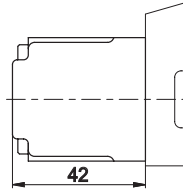
# HC-D4 Series

Sectional Directional Control Valve

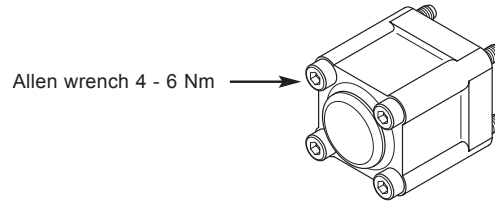


## SPOOL RETURN ACTION

### DIMENSIONS



### CLAMPING TORQUE



### DESCRIPTION

2 positions in A spring-centred spool



**F009A**

**F009B**

**F009C**

2 positions in B spring-centred spool

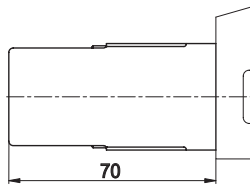


**F010A**

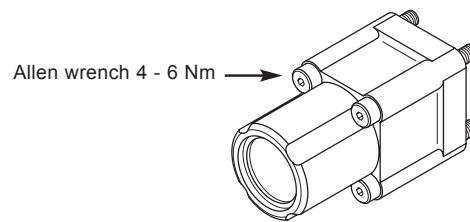
**F010B**

**F010C**

### DIMENSIONS



### CLAMPING TORQUE



### DESCRIPTION

2 positions detent in A spring-centred spool



**F011A**

**F011B**

**F011C**

2 positions detent in B spring-centred spool

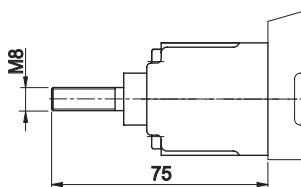


**F012A**

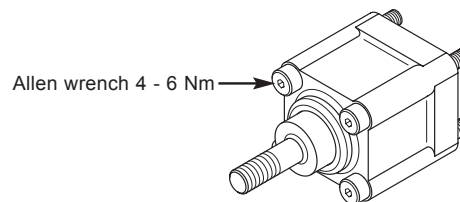
**F012B**

**F012C**

### DIMENSIONS



### CLAMPING TORQUE



### DESCRIPTION

3 positions spring-centred spool prearrangement dual command



**F013A**

**F013B**

**F013C**

# HC-D4 Series

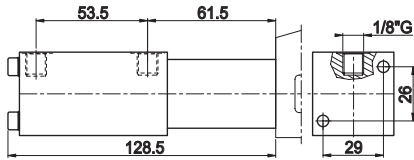
Sectional Directional Control Valve



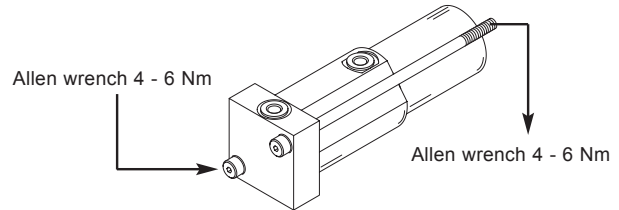
## SPOOL RETURN ACTION

### Pneumatic control classification

#### DIMENSIONS



#### CLAMPING TORQUE



#### DESCRIPTION

#### ORDERING CODES

Pneumatic control ON - OFF



**F020A**

Pneumatic control ON - OFF  
rotated 180°



**F021A**

Proportional pneumatic control



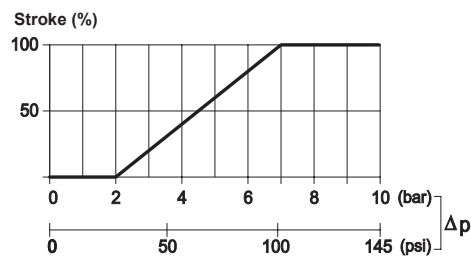
**F022A**

Proportional pneumatic control  
rotated 180°



**F023A**

### PROPORTIONAL PNEUMATIC CONTROL SPECIFICATIONS



The graphic shows the spool stroke as a function of the pneumatic pressure operating.

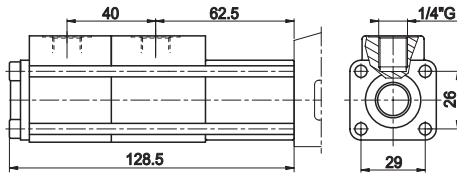
# HC-D4 Series

Sectional Directional Control Valve



## SPOOL RETURN ACTION

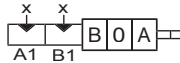
### DIMENSIONS



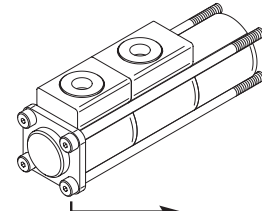
### SPECIFICATIONS

X in A1: it inhibits flow on port A  
X in B1: it inhibits flow on port B

P max. = 350 bar



### CLAMPING TORQUE



Allen wrench 4 - 6 Nm

### DESCRIPTION

Load limit in A and B

### ORDERING CODES

**F024A**

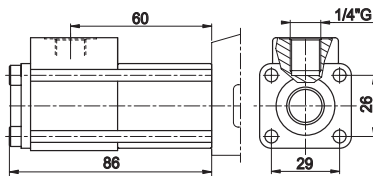
**F024C**

Load limit in A and B rotated 180°

**F025A**

**F025C**

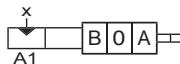
### DIMENSIONS



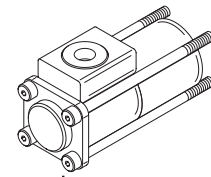
### SPECIFICATIONS

X in A1: it inhibits flow on port A

P max. = 350 bar



### CLAMPING TORQUE



Allen wrench 4 - 6 Nm

### DESCRIPTION

Load limit in A

### ORDERING CODES

**F026A**

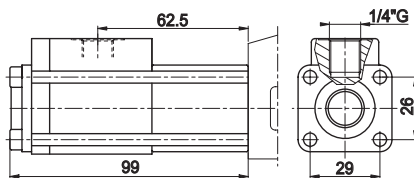
**F026C**

Load limit in A rotated 180°

**F027A**

**F027C**

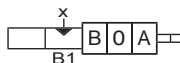
### DIMENSIONS



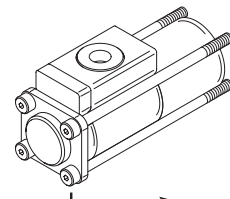
### SPECIFICATIONS

X in B1: it inhibits flow on port B

P max. = 350 bar



### CLAMPING TORQUE



Allen wrench 4 - 6 Nm

### DESCRIPTION

Load limit in B

### ORDERING CODES

**F028A**

**F028C**

Load limit in B rotated 180°

**F029A**

**F029C**

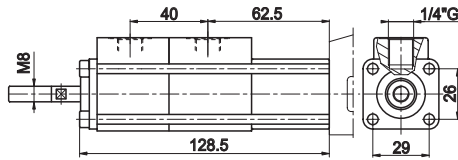
# HC-D4 Series

Sectional Directional Control Valve



## SPOOL RETURN ACTION

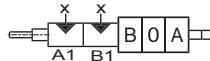
### DIMENSIONS



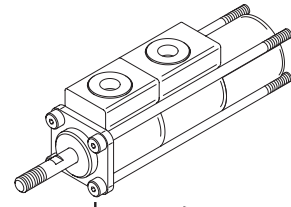
### SPECIFICATIONS

X in A1: it inhibits flow on port A  
X in B1: it inhibits flow on port B

P max. = 350 bar



### CLAMPING TORQUE



Allen wrench 4 - 6 Nm

### DESCRIPTION

Load limit in A and B dual control

### ORDERING CODES

**F030A**

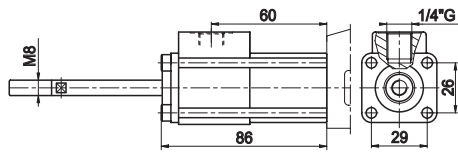
**F030C**

Load limit in A and Brotated 180° dual control

**F031A**

**F031C**

### DIMENSIONS



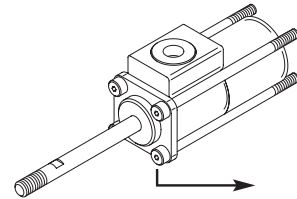
### SPECIFICATIONS

X in A1: it inhibits flow on port A

P max. = 350 bar



### CLAMPING TORQUE



Allen wrench 4 - 6 Nm

### DESCRIPTION

Load limit in A dual control

### ORDERING CODES

**F032A**

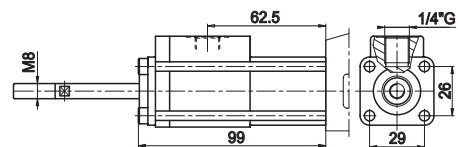
**F032C**

Load limit in A rotated 180° dual control

**F033A**

**F033C**

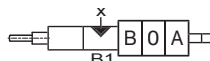
### DIMENSIONS



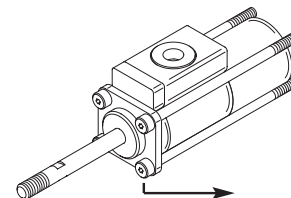
### SPECIFICATIONS

X in B1: it inhibits flow on port B

P max. = 350 bar



### CLAMPING TORQUE



Allen wrench 4 - 6 Nm

### DESCRIPTION

Load limit in B dual control

### ORDERING CODES

**F034A**

**F034C**

Load limit in B rotated 180° dual control

**F035A**

**F035C**

# HC-D4 Series

Sectional Directional Control Valve

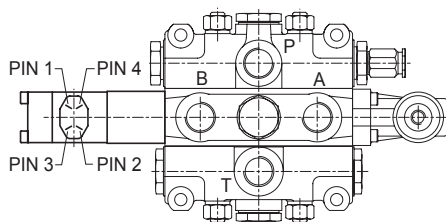


## SPOOL RETURN ACTION

### Electrical load limit kit specifications

POWER SUPPLY	CONTACTS CAPACITY	PROTECTION DEGREE	TEMPERATURE RANGE
12 VDC	3 A	IP 65	da -25°C a +90°C
24 VDC	1,5 A		

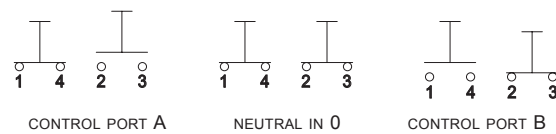
#### Operational diagram



CONTROL in A e B = connect PIN 1-4 and 2-3  
 CONTROL in A = connect PIN 2-3  
 CONTROL in B = connect PIN 1-4

#### Wiring diagram

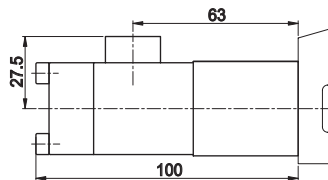
(NORMALLY CLOSED CONTACTS)



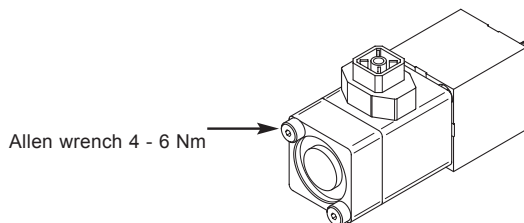
In case of inductive loads it is advisable to connect the terminals of the work port (solenoid) to a 200 VDC - 3A diode.

### Electrical load limit kit identification

#### DIMENSIONS



#### CLAMPING TORQUE



#### DESCRIPTION

Electrical load limit  
(normally closed contacts)

**F0360**

Electrical load limit rotated 180°  
(normally closed contacts)

**F0370**

Electrical load limit  
(normally open contacts)

**F0450**

Electrical load limit rotated 180°  
(normally open contacts)

**F0460**

**NOTE:** A HIRSCHMANN female connector, type G4 W1F, is available on request.  
 (Code 413000045, to be ordered separately).

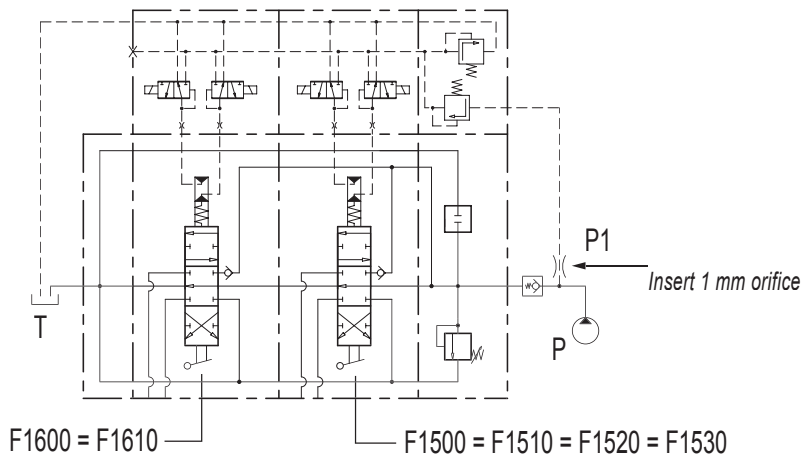
**SPOOL RETURN ACTION**

**Electrohydraulic control specifications**

<b>MAX INLET PRESSURE</b>	<b>REDUCED PRESSURE</b>	<b>BACK PRESSURE ON T</b>
350 bar	16 bar	3 bar
<b>FILTERING DEGREE</b>	<b>RECOMMENDED PILOT PIPE SIZE</b>	<b>TEMPERATURE RANGE</b>
25 $\mu$ absolute	$\varnothing$ 6 mm - 1/4" BSP	-20° +80°

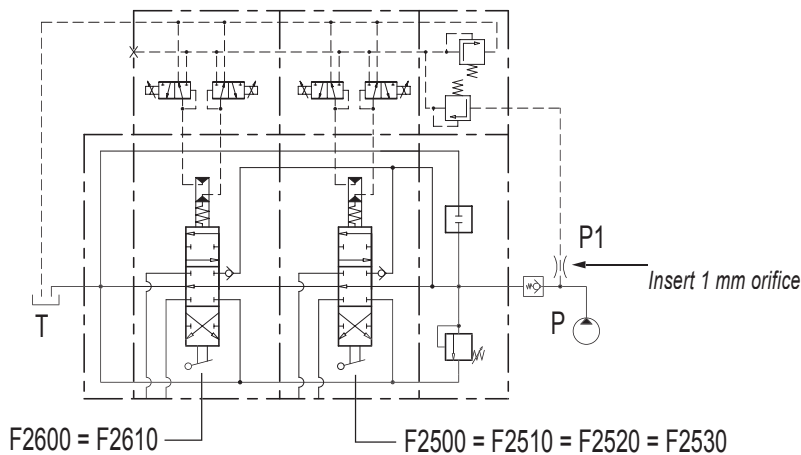
**Electrohydraulic ON-OFF control with fixed pressure reducing valve**

It is suitable to have an 8 bar backpressure on the free flow channel to make the system working.



**Electrohydraulic Proportional control with fixed pressure reducing valve**

It is suitable to have an 8 bar backpressure on the free flow channel to make the system working.



# HC-D4 Series

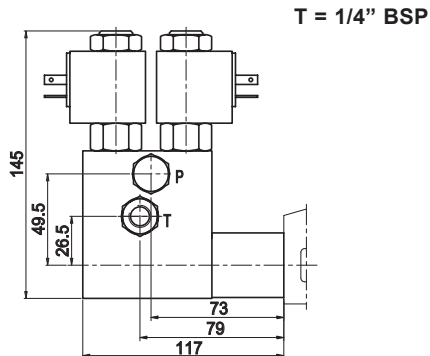
Sectional Directional Control Valve



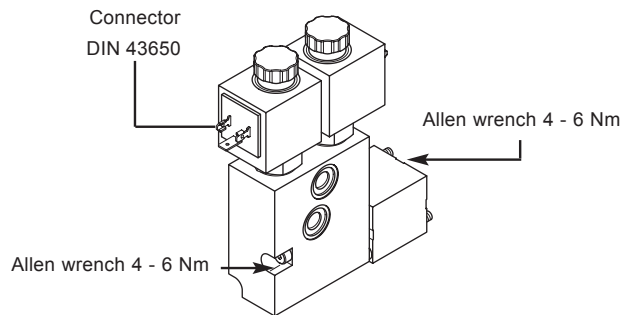
## SPOOL RETURN ACTION

### Electrohydraulic control ON-OFF identification

#### DIMENSIONS



#### CLAMPING TORQUE



#### DESCRIPTION

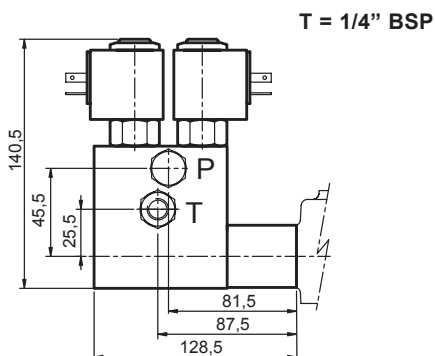
**3 positions  
electrohydraulic control ON - OFF**

#### ORDERING CODES

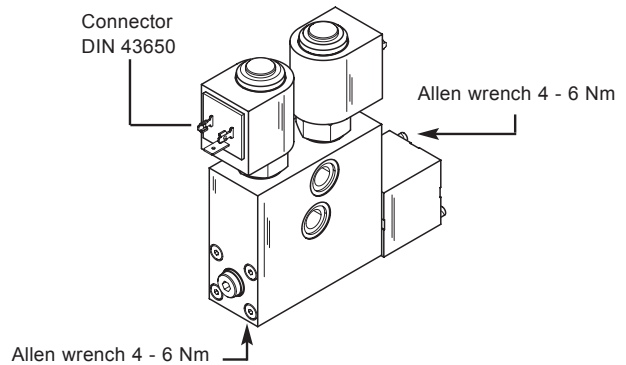
(12 VDC)  
**F0600**  
19 W - 1,58 A

(24 VDC)  
**F0610**  
19 W - 0,81 A

#### DIMENSIONS



#### CLAMPING TORQUE



#### DESCRIPTION

**3 positions electrohydraulic control ON - OFF  
(stackable with Proportional control)**

#### ORDERING CODES

(12 VDC)  
**F1600**  
19 W - 1,58 A

(24 VDC)  
**F1610**  
19 W - 0,81 A

Electrohydraulic ON-OFF control stackable with electrohydraulic proportional control (F2600 = F2610)  
Control kit already includes offices to make spool displacement more gradual.

# HC-D4 Series

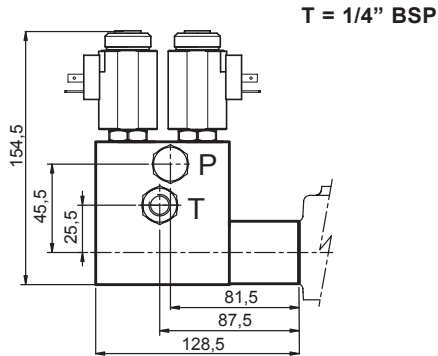
Sectional Directional Control Valve



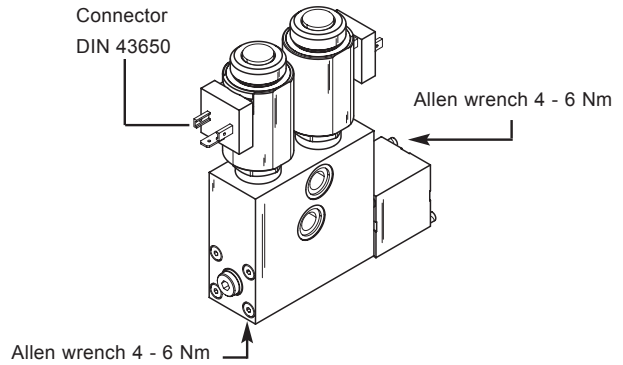
## SPOOL RETURN ACTION

### Electrohydraulic control Proportional identification

#### DIMENSIONS



#### CLAMPING TORQUE



#### DESCRIPTION

**3 positions**  
electrohydraulic control **PROPORTIONAL**

#### ORDERING CODES

(12 VDC)

**F2600**

(24 VDC)

**F2610**

Proportional control kit, mechanically retrooperated, allows the maximum precision of positioning, limiting the hysteresis.

The control is operated with PWM control of the current. PWM frequency suggested: 60-80 Hz

#### CURRENT REGULATIONS

Nominal voltage (V)	Resistance ( $R_{20}$ ) (Ohm)	Current (min) (A)	Current (max) (A)
12 VDC	3,7	0,9	1,7
24 VDC	15,5	0,45	0,85

# HC-D4 Series

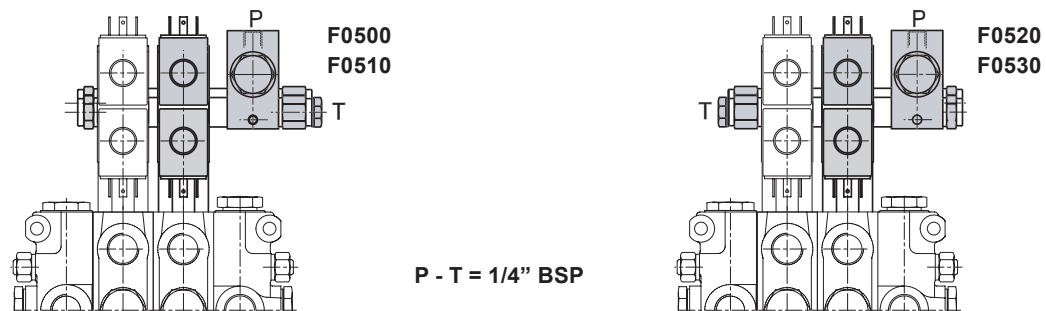
Sectional Directional Control Valve



## SPOOL RETURN ACTION

Electrohydraulic control with fixed pressure reducing valve identification

### DIMENSIONS



### DESCRIPTION

Electrohydraulic control ON - OFF  
(fixed pressure reducing valve) P-T inlet inside

(12 VDC)

**F0500**

19 W - 1,58 A

### ORDERING CODES

(24 VDC)

**F0510**

19 W - 0,81 A

Electrohydraulic control ON - OFF  
(fixed pressure reducing valve) P inlet T outlet

(12 VDC)

**F0520**

19 W - 1,58 A

(24 VDC)

**F0530**

19 W - 0,81 A

### Adaptable only F0600 = F0610 control kit

Electrohydraulic control ON - OFF  
(fixed pressure reducing valve) P-T inlet inside

(12 VDC)

**F1500**

19 W - 1,58 A

(24 VDC)

**F1510**

19 W - 0,81 A

Electrohydraulic control ON - OFF  
(fixed pressure reducing valve) P inlet T outlet

(12 VDC)

**F1520**

19 W - 1,58 A

(24 VDC)

**F1530**

19 W - 0,81 A

Electrohydraulic control PROPORTIONAL  
(fixed pressure reducing valve) P-T inlet inside

(12 VDC)

**F2500**

(24 VDC)

**F2510**

Electrohydraulic control PROPORTIONAL  
(fixed pressure reducing valve) P inlet T outlet

(12 VDC)

**F2520**

(24 VDC)

**F2530**

### Adaptable only F0600, F0610, F2600, F2610 control kit

**NOTE:** F0500, F0510, F0520, F0530, F1500, F1510, F1520, F1530, F2500, F2510, F2520 and F2530 control kits can be used only with left inlet side monoblocks.

# HC-D4 Series

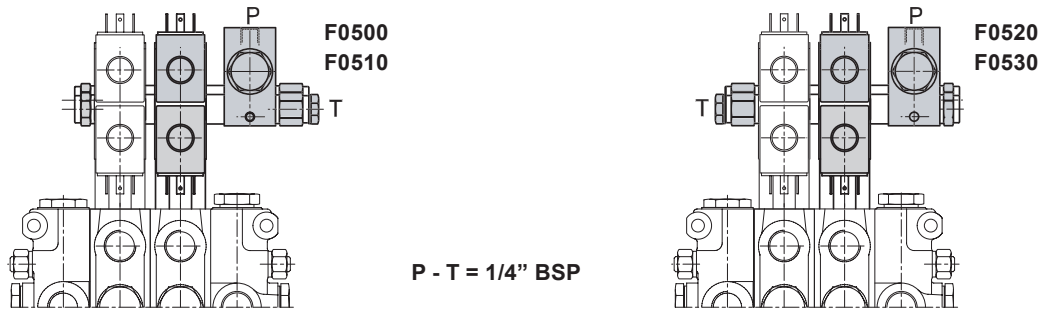
Sectional Directional Control Valve



## SPOOL RETURN ACTION

Electrohydraulic control with fixed pressure reducing valve identification

### DIMENSIONS



### DESCRIPTION

Electrohydraulic control ON - OFF  
(fixed pressure reducing valve) P-T inlet inside

(12 VDC)

**F0500**

19 W - 1,58 A

### ORDERING CODES

(24 VDC)

**F0510**

19 W - 0,81 A

Electrohydraulic control ON - OFF  
(fixed pressure reducing valve) P inlet T outlet

(12 VDC)

**F0520**

19 W - 1,58 A

(24 VDC)

**F0530**

19 W - 0,81 A

### Adaptable only F0600 = F0610 control kit

Electrohydraulic control ON - OFF  
(fixed pressure reducing valve) P-T inlet inside

(12 VDC)

**F1500**

19 W - 1,58 A

(24 VDC)

**F1510**

19 W - 0,81 A

Electrohydraulic control ON - OFF  
(fixed pressure reducing valve) P inlet T outlet

(12 VDC)

**F1520**

19 W - 1,58 A

(24 VDC)

**F1530**

19 W - 0,81 A

Electrohydraulic control PROPORTIONAL  
(fixed pressure reducing valve) P-T inlet inside

(12 VDC)

**F2500**

(24 VDC)

**F2510**

Electrohydraulic control PROPORTIONAL  
(fixed pressure reducing valve) P inlet T outlet

(12 VDC)

**F2520**

(24 VDC)

**F2530**

### Adaptable only F0600, F0610, F2600, F2610 control kit

**NOTE:** F0500, F0510, F0520, F0530, F1500, F1510, F1520, F1530, F2500, F2510, F2520 and F2530 control kits can be used only with left inlet side monoblocks.

# HC-D4 Series

Sectional Directional Control Valve

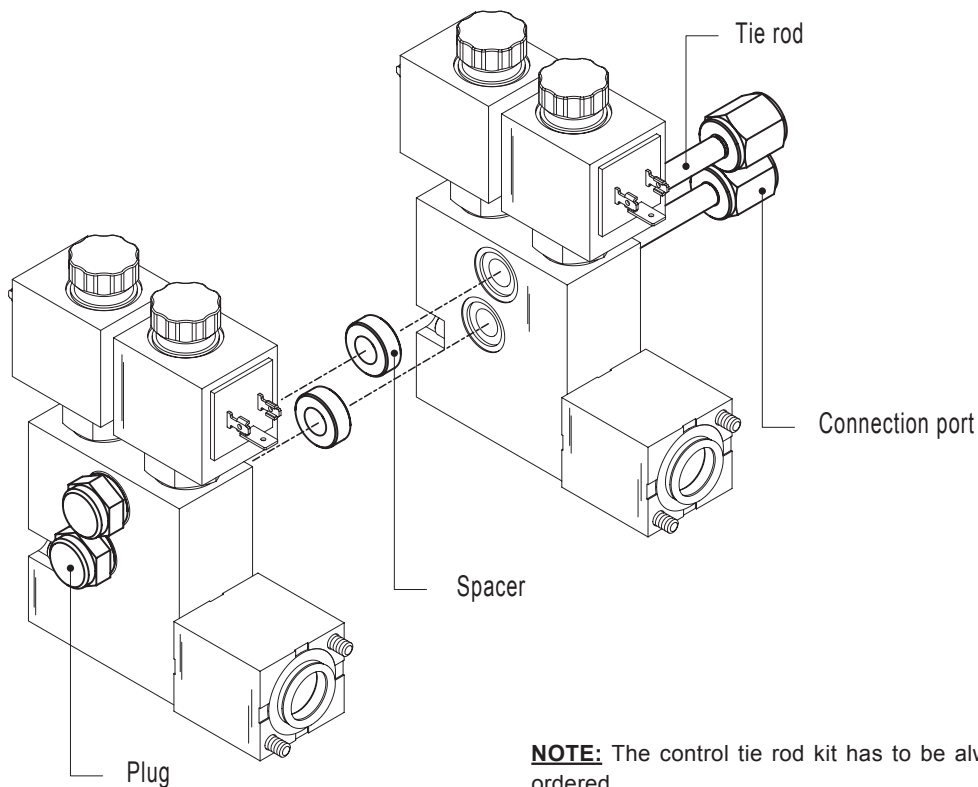


## SPOOL RETURN ACTION

### Control tie rod assembly

The length of the control tie rod, will change depending on the section numbers; in this way will be easy install in the right way the sections and avoid any misassembly.

Each kit is composed by 2 tie rods, 2 plug, 2 connection ports and spacers according to the section number (see pict.A)



**NOTE:** The control tie rod kit has to be always separately ordered.

Reducing valve, combined with electrohydraulic, electropneumatic and proportional control kit has to be calculated as a normal working section

#### **ORDER EXAMPLE:**

Complete valves with 3 sections F1600 **requires a complete tie-rod kit /3**

Complete valves with 2 sections F1600 and 1 section with F1500 (reducing valve) **requires a complete tie-rod kit /4**

# HC-D4 Series

Sectional Directional Control Valve



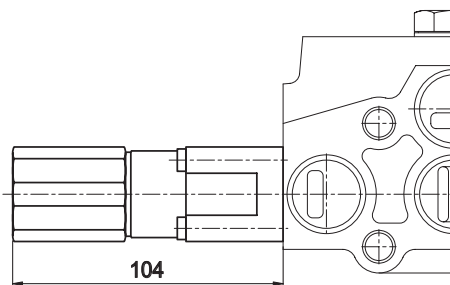
## SPOOL RETURN ACTION

### Kick-out control specifications

- Special spool request
- Specify working pressure (50-350) bar

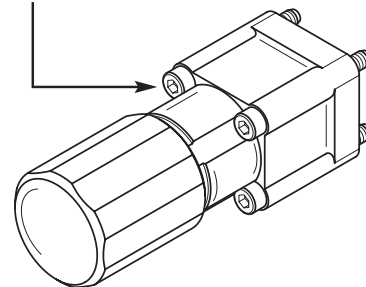
### Kick-out control classification

#### DIMENSIONS



#### CLAMPING TORQUE

Allen wrench 4 - 6 Nm



#### DESCRIPTION

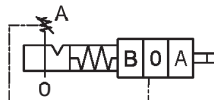
#### ORDERING CODES

Detent in A-B  
kick-out for centre return



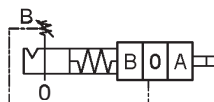
**F0170**

Detent in A  
kick-out for centre return



**F0180**

Detent in B  
kick-out for centre return



**F0190**

# HC-D4 Series

Sectional Directional Control Valve

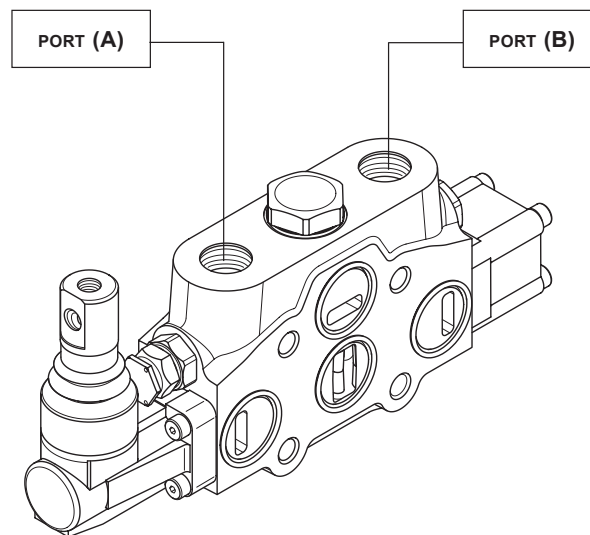


## WORK SECTION TYPE

### Section work identification

DESCRIPTION	ORDERING CODES
Parallel circuit section	RP
Tandem (conventional) circuit section	RT
Series circuit section	RS

### Thread type



SERVICE PORTS (A - B)

G04

U03

U04

M01

# HC-D4 Series

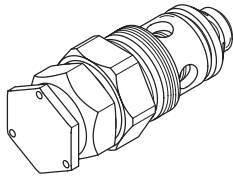
Sectional Directional Control Valve



## AUXILIARY VALVES

### Auxiliary valves identification

#### ANTISHOCK VALVE (ARV)



HYDRAULIC SCHEMATIC



ORDERING CODES

**01 PA**

port (A)

**01 PB**

port (B)

#### SETTING RANGES (BAR)

Range (A)

40 / 120 - at full flow

Range (B)

121 / 150 - at full flow  
25 / 95 - at min. flow

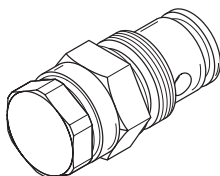
Range (C)

151 / 250 - at full flow  
96 / 220 - at min. flow

Range (D)

251 / 350 - at full flow  
221 / 280 - at min. flow

#### ANTICAVITATION VALVE



HYDRAULIC SCHEMATIC



ORDERING CODES

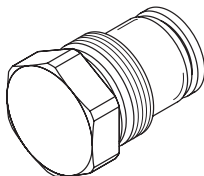
**02 PA**

port (A)

**02 PB**

port (B)

#### VALVE PLUGGED



HYDRAULIC SCHEMATIC



ORDERING CODES

**05 PA**

port (A)

**05 PB**

port (B)

**NOTE:** sections designed to house auxiliary valve option require double choice on work ports A and B.

Always indicate setting value when using antishock auxiliary valves and combination valves:

SETTING AT FULL FLOW = 01 PA **120**  
SETTING AT MIN. FLOW = 01 PA **120-A**

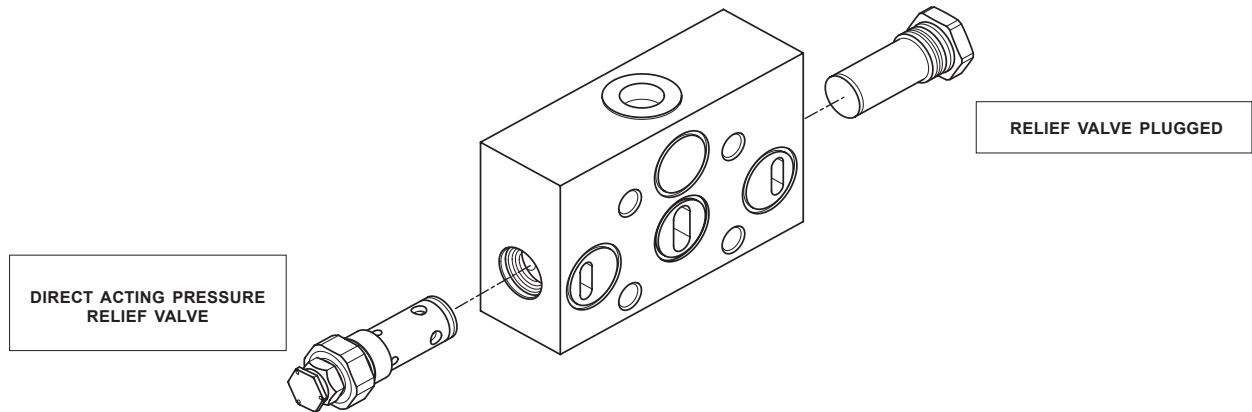
# HC-D4 Series

Sectional Directional Control Valve



## INTERMEDIATE SECTIONS

Order example:  
INTERMEDIATE INLET SECTION



- BE** *intermediate inlet section type*
- 009** *valve arrangement*
- (150)** *setting direct acting pressure valve*
- A G04** *inlet and thread position*

## Inlet side

HYDRAULIC DIAGRAM	LAYOUT	DESCRIPTION + CODE
		<p>INTERMEDIATE INLET SECTION</p> <p><b>BE</b></p>
		<p>INTERMEDIATE SECTION WITH PRESSURE RELIEF VALVE</p> <p><b>BV*</b></p>

(\*) Omit the code for inlet positioning and type of thread

# HC-D4 Series

Sectional Directional Control Valve



## INTERMEDIATE SECTIONS

### Operation of intermediate inlet section

#### TYPE E

The intermediate inlet section is driven by two pumps (P+P1).

The downstream elements can be set to a lower pressure than those the upstream one by adjusting the pressure relief valve of the intermediate section in question.

#### TYPE V

The intermediate inlet section and the elements are driven by a single pump (P).

The downstream elements can be set to a lower pressure than those the upstream one by adjusting the pressure relief valve of the intermediate section in question.

### Valves identification

TYPE	DESIGN	DIAGRAM	DESCRIPTION
1			Direct acting pressure relief valve
2			Pilot operated pressure relief valve
3			Relief valve plugged

TYPE	DESIGN	DIAGRAM	DESCRIPTION
4			Main anticavitation check valve
11			Plug with pressure gauge connection

### Valve arrangement

**009 = 2A-3B**

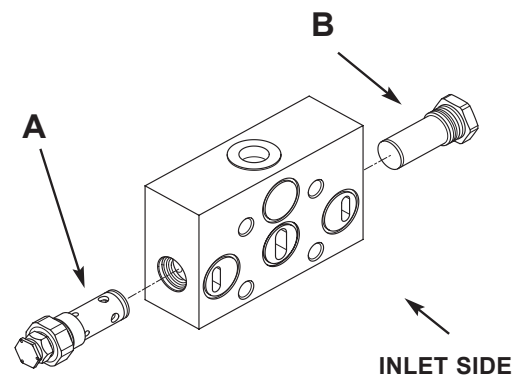
Pressure relief valve in port A side

Plug replaces pressure relief valve in port B side

The code identifies: with a number, the type of valve; with a letter, its position on the inlet section.

(A) = spool action side

(B) = spool return action side



# HC-D4 Series

Sectional Directional Control Valve



## INTERMEDIATE SECTIONS

### Valves combination

<b>001</b>	<b>002</b>	<b>008</b>	<b>009</b>	<b>010</b>	<b>016</b>	<b>017</b>	<b>018</b>	<b>019</b>	<b>020</b>	<b>027</b>	<b>028</b>	<b>029</b>	<b>030</b>
1A-3B	1A-4B	1A-11B	2A-3B	2A-4B	2A-11B	3A-1B	3A-2B	3A-3B	3A-4B	3A-11B	4A-1B	4A-2B	4A-3B

<b>037</b>	<b>084</b>	<b>085</b>	<b>086</b>	<b>087</b>
4A-11B	11A-1B	11A-2B	11A-3B	11A-4B

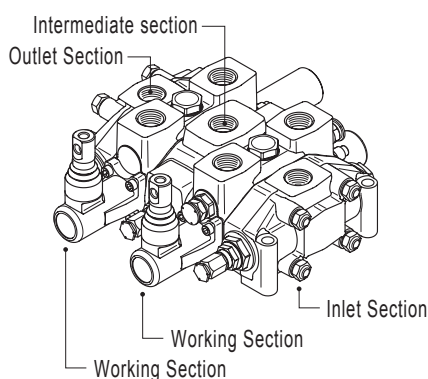
### Inlet and thread available

A

Upper inlet

<b>M01</b>	<b>G04</b>	<b>U03</b>	<b>U04</b>
------------	------------	------------	------------

### Complete configuration samples for HC-D4 with intermediate inlet section (BE)



#### HC-D4/2

IR 001 150 A G04	.....	Right inlet section
W001A H001 F001A RP GO4	.....	Working section
<b>BE 009 120 A G04</b>	.....	Intermediate inlet section
W001A H001 F001A RP GO4	.....	Working section
TJ A G04	.....	Outlet section

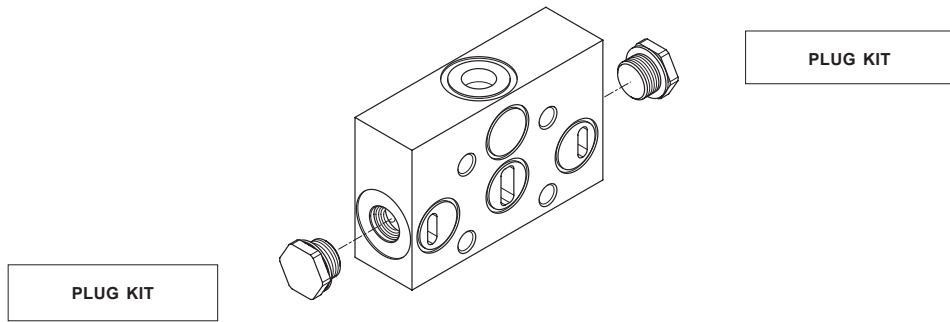
# HC-D4 Series

Sectional Directional Control Valve



## INTERMEDIATE SECTIONS

Order example:  
INTERMEDIATE OUTLET SECTION



**BF** intermediate outlet section type

**A G04** outlet and thread position

### Inlet side

HYDRAULIC DIAGRAM	LAYOUT	DESCRIPTION + CODE
		<p>INTERMEDIATE OUTLET SECTION WITH SINGLE TANK RETURN</p> <p><b>BF</b></p>
		<p>INTERMEDIATE OUTLET SECTION WITH TWO TANK RETURNS</p> <p><b>BG</b></p>

### Operation of intermediate outlet section

#### TYPE F

The above outlet section allows the flow of oil of the two pumps and the tank ports to be piped to a single outlet T.

#### TYPE G

The section in question allows the flow of oil of the two pumps to be piped in two outlets:

- HPCO for powering another directionale control valve
- T for discharge of the work ports

In order to obtain this, the two T need to be linked.

# HC-D4 Series

Sectional Directional Control Valve



## INTERMEDIATE SECTIONS

Outlet and thread available

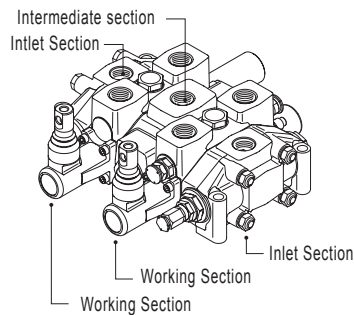
### BF

<b>A</b>	Upper inlet	<b>M02</b> <b>G04</b> <b>G05</b> <b>U03</b> <b>U04</b>	
			Outlet (T)
<b>G</b>	Front outlet side A	<b>M02</b> <b>G04</b> <b>U03</b> <b>U04</b>	
			Outlet (T)
<b>H</b>	Rear outlet side B	<b>M02</b> <b>G04</b> <b>U03</b> <b>U04</b>	
			Outlet (T)

### BG

<b>J</b>	Upper outlet HPCO - front side A and rear side B to T	<b>M02</b> <b>G04</b> <b>U03</b> <b>U04</b>	
			Outlet (HPCO) Outlet (T)

Complete configuration samples for HC-D4 with intermediate outlet section (BF)



**HC-D4/2**

- IR 009 150 A G04 ..... Right inlet section
- W001A H001 F001A RP G04 ..... Working section
- BF A G05** ..... Intermediate inlet section
- W001A H001 F001A RP G04 ..... Working section
- IL 009 150 A G04 ..... Left inlet section

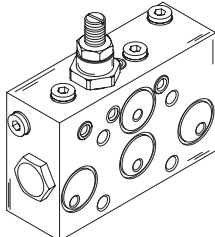
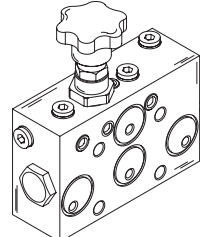
# HC-D4 Series

Sectional Directional Control Valve

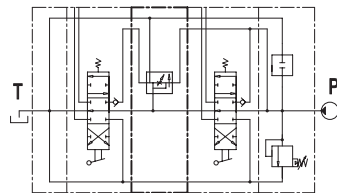


## INTERMEDIATE FLOW DIVIDERS

Order example:

LAYOUT	DESCRIPTION + CODE	LAYOUT	DESCRIPTION + CODE
	INTERMEDIATE WITH SCREW-ADJUSTABLE FLOW DIVIDER  <b>C001</b>		INTERMEDIATE WITH HAND WHEEL-ADJUSTABLE FLOW DIVIDER  <b>C002</b>

### HYDRAULIC DIAGRAM



### Operating principle

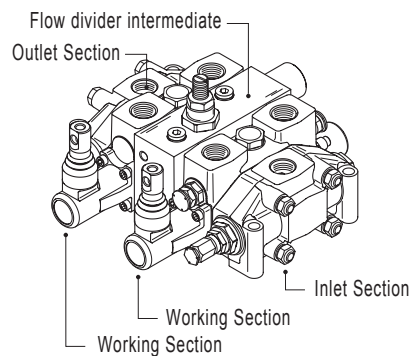
The intermediate section of the flow divider allows sections of the divider itself to be powered, with a flow rate set by the user and independent of the downstream load.

The excess flow may power another directional control valve or be returned direct to tank.

The flow adjustment range (Q=l/min) change between:

- Minimum Q = 3 l/min
- Maximum Q = 40 l/min

### Complete configuration samples for HC-D4 with intermediate flow divider



#### HC-D4/2

IR 001 150 A G04	Right inlet section
W001A H001 F001A RP GO4	Working section
<b>C 001</b>	Intermediate inlet flow divider
W001A H001 F001A RP GO4	Working section
TJ A GO4	Outlet section

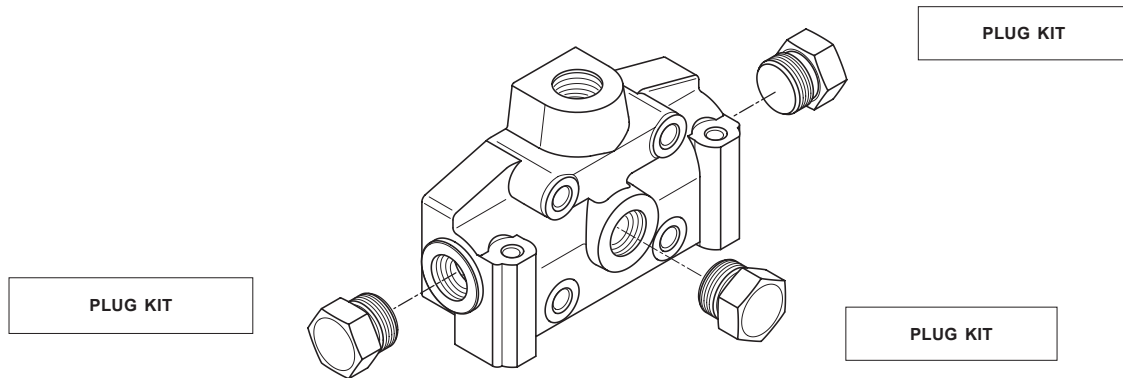
# HC-D4 Series

Sectional Directional Control Valve



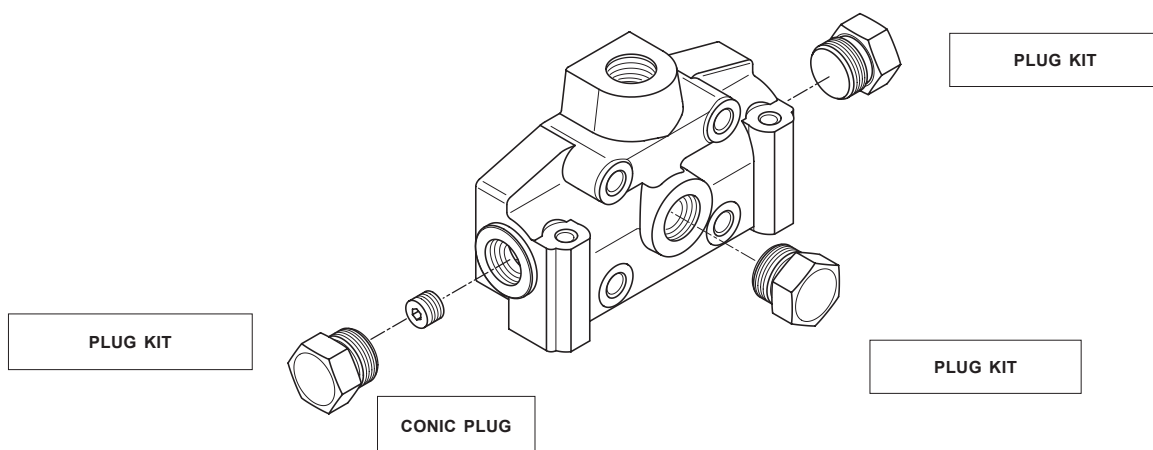
## OUTLET SECTION

Order example:  
1 outlet



- TJ** outlet side type
- A G04** outlet and thread available

Order example:  
HPCO version outlet



- TM** outlet side type
- M G04** outlet and thread available

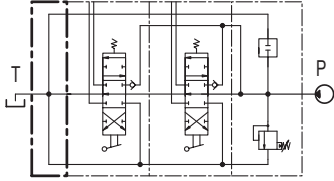
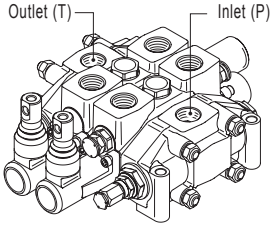
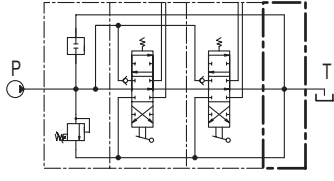
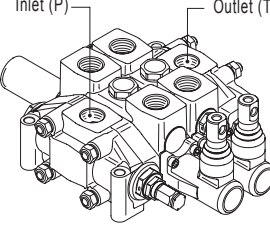
# HC-D4 Series

Sectional Directional Control Valve

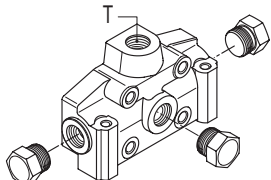
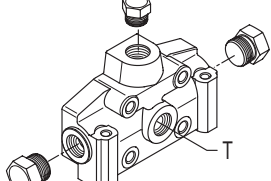
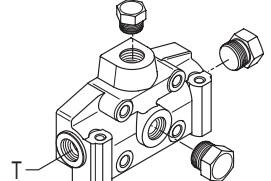
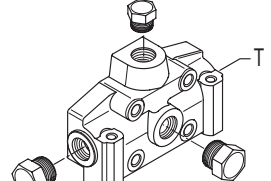


## OUTLET SECTION

### Outlet with single tank classification

HYDRAULIC DIAGRAM	LAYOUT	DESCRIPTION + CODE
		<p>OUTLET SECTION WITH SINGLE RETURN (T) RIGHT-SIDE INLET (P)</p> <p style="text-align: center;"><b>TJ</b></p>
		<p>OUTLET SECTION WITH SINGLE RETURN (T) LEFT-SIDE INLET (P)</p> <p style="text-align: center;"><b>TK</b></p>

### Outlet and thread available

<b>A</b>	<p style="text-align: center;">Upper outlet</p> <div style="display: flex; justify-content: space-around;"> <div style="border: 1px solid black; padding: 2px 10px;"><b>M02</b></div> <div style="border: 1px solid black; padding: 2px 10px;"><b>G04</b></div> <div style="border: 1px solid black; padding: 2px 10px;"><b>U03</b></div> <div style="border: 1px solid black; padding: 2px 10px;"><b>U04</b></div> </div>	
<b>C</b>	<p style="text-align: center;">Central outlet</p> <div style="display: flex; justify-content: space-around;"> <div style="border: 1px solid black; padding: 2px 10px;"><b>M02</b></div> <div style="border: 1px solid black; padding: 2px 10px;"><b>G04</b></div> <div style="border: 1px solid black; padding: 2px 10px;"><b>U03</b></div> <div style="border: 1px solid black; padding: 2px 10px;"><b>U04</b></div> </div>	
<b>G</b>	<p style="text-align: center;">Front outlet side A</p> <div style="display: flex; justify-content: space-around;"> <div style="border: 1px solid black; padding: 2px 10px;"><b>M02</b></div> <div style="border: 1px solid black; padding: 2px 10px;"><b>G04</b></div> <div style="border: 1px solid black; padding: 2px 10px;"><b>U03</b></div> <div style="border: 1px solid black; padding: 2px 10px;"><b>U04</b></div> </div>	
<b>H</b>	<p style="text-align: center;">Rear outlet side B</p> <div style="display: flex; justify-content: space-around;"> <div style="border: 1px solid black; padding: 2px 10px;"><b>M02</b></div> <div style="border: 1px solid black; padding: 2px 10px;"><b>G04</b></div> <div style="border: 1px solid black; padding: 2px 10px;"><b>U03</b></div> <div style="border: 1px solid black; padding: 2px 10px;"><b>U04</b></div> </div>	

# HC-D4 Series

Sectional Directional Control Valve



## OUTLET SECTION

### Outlet with two tanks classification

HYDRAULIC DIAGRAM	LAYOUT	DESCRIPTION + CODE
		<p>OUTLET SECTION WITH TWO RETURN RIGHT-SIDED INLET (P)</p> <p><b>TM</b></p>
		<p>OUTLET SECTION WITH TWO RETURNS LEFT-SIDED INLET (P)</p> <p><b>TN</b></p>

### Outlet and thread available

<b>M</b>	HPCO upper outlet T (TANK) side outlet B	<div style="display: flex; justify-content: space-around; align-items: center;"> <div style="border: 1px solid black; padding: 2px 10px; margin: 2px;">M02</div> <div style="border: 1px solid black; padding: 2px 10px; margin: 2px;">G04</div> <div style="border: 1px solid black; padding: 2px 10px; margin: 2px;">U03</div> <div style="border: 1px solid black; padding: 2px 10px; margin: 2px;">U04</div> </div>	
<b>N</b>	HPCO upper outlet T (TANK) front outlet side A	<div style="display: flex; justify-content: space-around; align-items: center;"> <div style="border: 1px solid black; padding: 2px 10px; margin: 2px;">M02</div> <div style="border: 1px solid black; padding: 2px 10px; margin: 2px;">G04</div> <div style="border: 1px solid black; padding: 2px 10px; margin: 2px;">U03</div> <div style="border: 1px solid black; padding: 2px 10px; margin: 2px;">U04</div> </div>	
<b>P</b>	HPCO central outlet T (TANK) side outlet B	<div style="display: flex; justify-content: space-around; align-items: center;"> <div style="border: 1px solid black; padding: 2px 10px; margin: 2px;">M02</div> <div style="border: 1px solid black; padding: 2px 10px; margin: 2px;">G04</div> <div style="border: 1px solid black; padding: 2px 10px; margin: 2px;">U03</div> <div style="border: 1px solid black; padding: 2px 10px; margin: 2px;">U04</div> </div>	
<b>Q</b>	HPCO central outlet T (TANK) front outlet side A	<div style="display: flex; justify-content: space-around; align-items: center;"> <div style="border: 1px solid black; padding: 2px 10px; margin: 2px;">M02</div> <div style="border: 1px solid black; padding: 2px 10px; margin: 2px;">G04</div> <div style="border: 1px solid black; padding: 2px 10px; margin: 2px;">U03</div> <div style="border: 1px solid black; padding: 2px 10px; margin: 2px;">U04</div> </div>	

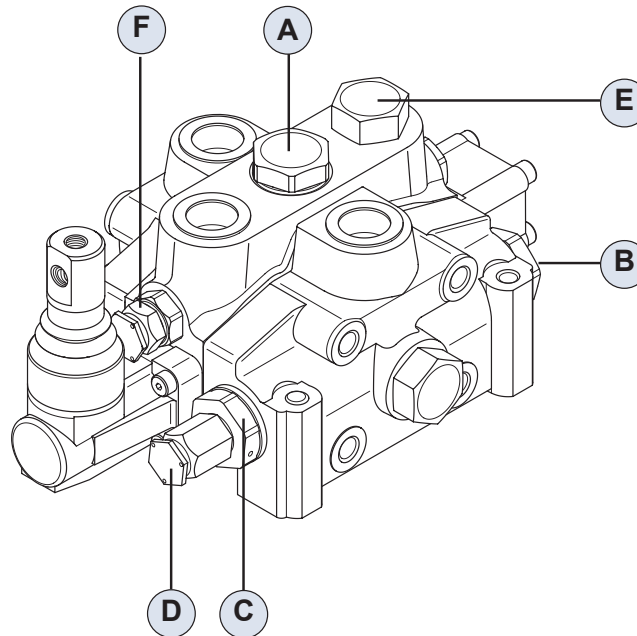


# HC-D4 Series

Sectional Directional Control Valve



## INSTALLATION AND MAINTENANCE



### General clamping torque

POSITION	DESCRIPTION	CLAMPING TORQUE (Nm)
A	load check valve plug	80
B	plug to replace pressure relief valve	80
C	pressure relief valve body	80
D	pressure relief valve cap	20
E	fittings in service ports A-B-P-T	G04 = 70 / U03 = 70 / U04 = 90 M01 = 50 / M02 = 70
F	clamping torque auxiliary valve	see table (X)

TABLE (X)

ANTISHOCK VALVE PLUG  
20 Nm

ANTICAVITATION VALVE PLUG  
20 Nm

PLUG REPLACES VALVE  
50 Nm

ANTISHOCK VALVE CAP  
50 Nm

ANTICAVITATION VALVE CAP  
50 Nm

# HC-D4 Series

Sectional Directional Control Valve



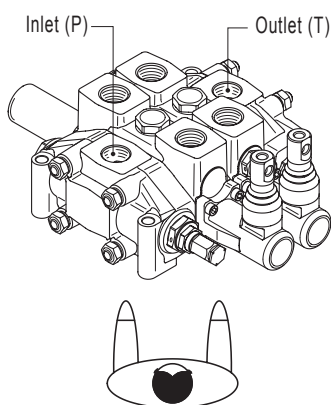
## INSTALLATION AND MAINTENANCE

### Assembly instructions

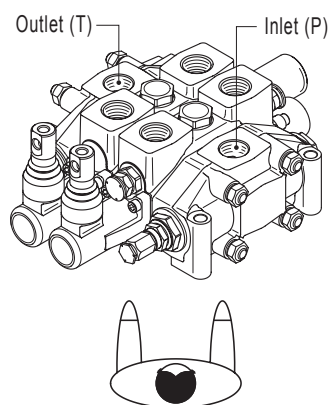
Since our directional control valve casings have symmetrical galleries, they can be converted from right-side inlet (IR) to left-side inlet (IL) simply by turning the spool and relative controls through 180°.

This operation is not possible when using spool types: 012 - 013 - 014.

Recommended curve for our standard directional control valves **A01** ( see remote controls catalogue).



Directional control valve with left inlet (IL)



Directional control valve with right inlet (IR)

### Product identification

An identification plate is put on every HC-D4 sectional valve.

