

LS3000 Series

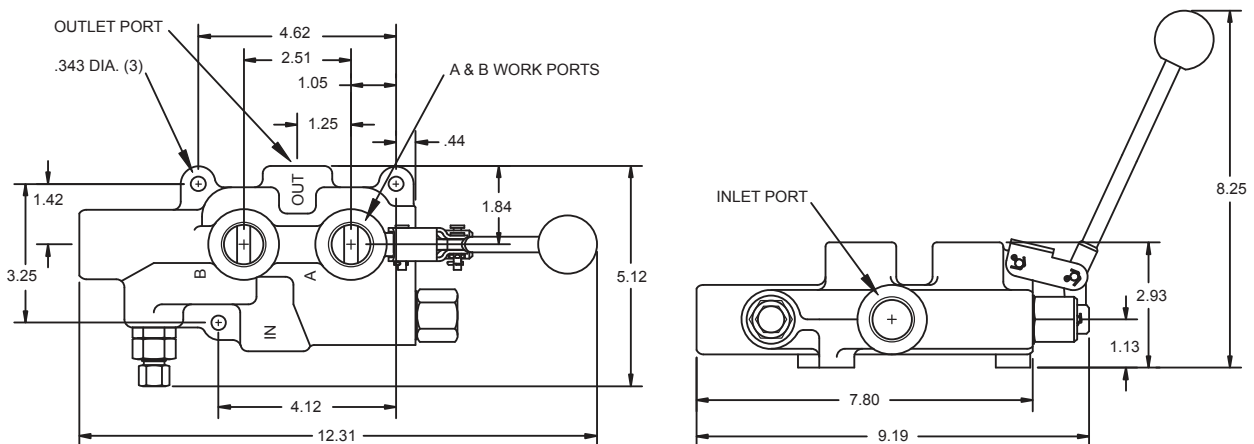


Log Splitter Valve

STANDARD FEATURES

- Hydraulically balanced, hard chrome plated spool
- Handle can be installed in 'up' or 'down' position
- Detent release pressure adjustable from 1000 to 2000 PSI
- For use with system flows up to 25 GPM
- Relief valve adjustable up to 2750 PSI
- Tandem centre spool (in neutral position, both work ports blocked, pump unloaded to tank)
- Ideal for log-splitter applications. Available with 3/4" NPTF work ports for higher flow applications

MODEL LS3000 DIMENSIONAL DATA



SPECIFICATIONS

1. Max design and test pressure 2750 PSI
2. Max tank port pressure 150 PSI
3. Flow rating 25 GPM max.
4. Relief valve setting 2250 PSI
5. This valve has one position pressure release detent with spring centre to neutral.
6. Weight 10 lbs
7. Recommended filtration ISO 4406 19/17/14
8. Max operation temperature 180°F
9. In exposed environments do not mount with spool vertical and handle end down.

LSR3060 Series

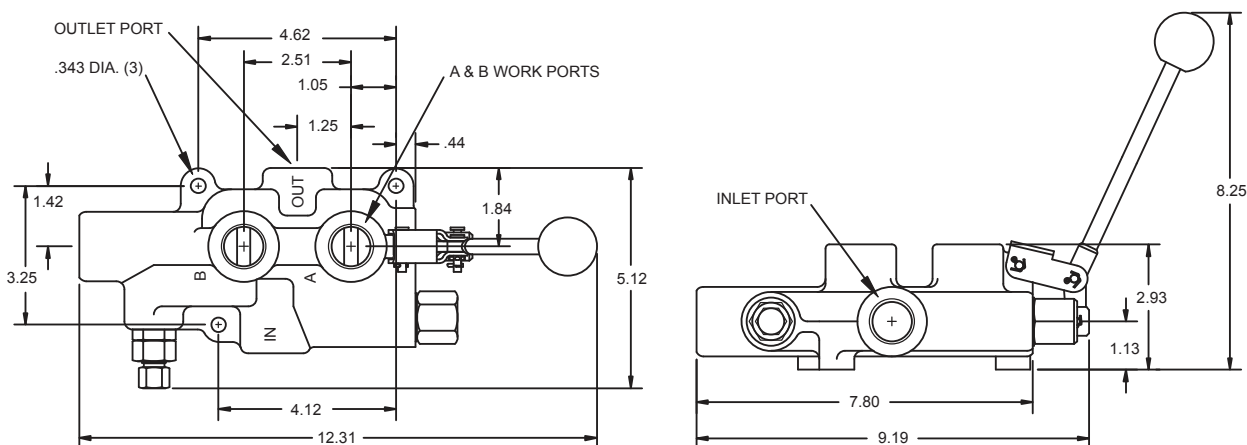
Log Splitter Valve



FUNCTION:

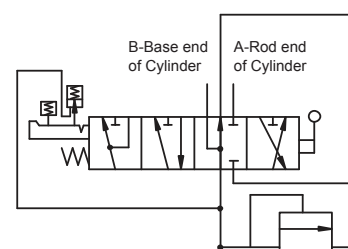
The Prince LSR-3060-3 log splitter valve features an extremely fast 'Rapid Extend' high speed mode. The LSR has been specifically designed to reduce system costs by allowing a single stage pump to be used in systems currently using two stage (hi-low) pumps. When extra splitting force is required, the LSR allows the user to manually shift from high speed mode to high force mode. A 'soft stop' differentiates between high force and high speed modes. Laboratory testing has not shown a significant difference in working cycle times between single stage/rapid extend systems and two stage systems. (Working cycle is the average time between extending the cylinder to split the first log and extending to split the next log after the split wood has been removed and a new log has been placed on the log splitter.)

MODEL LSR3060 DIMENSIONAL DATA



STANDARD FEATURES

- Hydraulically balanced, hard chrome plated spool
- Handle can be installed in 'up' or 'down' position
- Extend flows of up to 25 GPM with inlet flows of 4 GPM
- Relief valve adjustable up to 3500 PSI
- Tandem centre spool
- Manual shift from high speed mode to high force mode
- Spring centre position 4 position spool with soft stop
- Pressure release detent on retract



SPECIFICATIONS

1. Max design and test pressure 3500 PSI
2. Max tank port pressure 150 PSI
3. Nominal inlet flow rating 4 GPM
4. Relief valve setting 2250 PSI
5. This valve has a pressure release detent from spool in w/ spring centre to neutral
6. The valve has a 4 position spool with normal extend and retract positions and a 4th rapid extend position
7. Max operation temperature 180°F
8. In exposed environments, do not mount with spool in the vertical position.
9. Dimensionally similar to the LS3000 valve