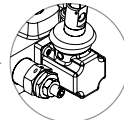
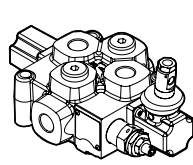
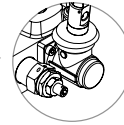


Q25 Series

Mono-Block Directional Control Valve

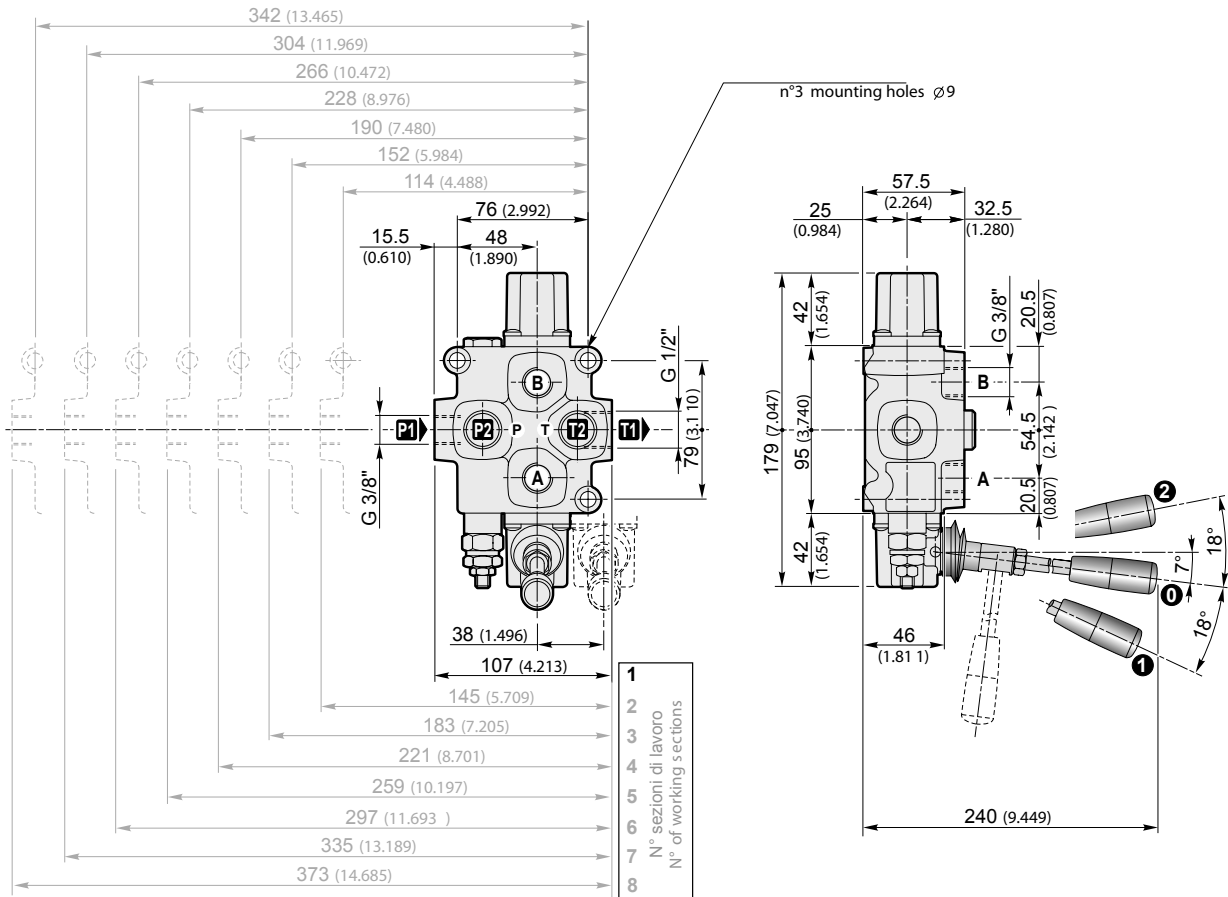


(Standard)
Control and positioner plastic



S
Control and positioner Aluminium

Q25 - F7S R250 - 2x 103 A1 M1 - F3D - **S** - 1E
1 2 3 4 5 6 7 8 9



Q25 - F7S R250 - 2x 103 A1 M1 - F3D - 12V - 2E
1 2 3 4 5 6 7 8 9

Available ports

Ports	BSP (standard)	SAE
P1	G 3/8"	9/16" - 18UNF (SAE 6)
P2	G 3/8"	9/16" - 18UNF (SAE 6)
A-B	G 3/8"	9/16" - 18UNF (SAE 6)
T1	G 1/2"	7/8" - 14UNF (SAE 10)
T2	G 3/8"	9/16" - 18UNF (SAE 6)

Carry-over plug (on T1 port)

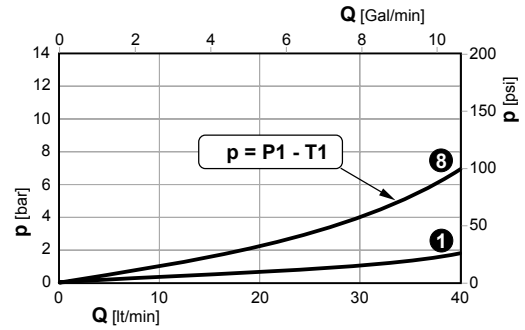
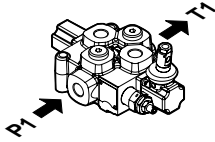
	T1		X	
		G 1/2"	7/8"-14UNF (SAE 10)	G 3/8" G 1/2"

Q25 Series

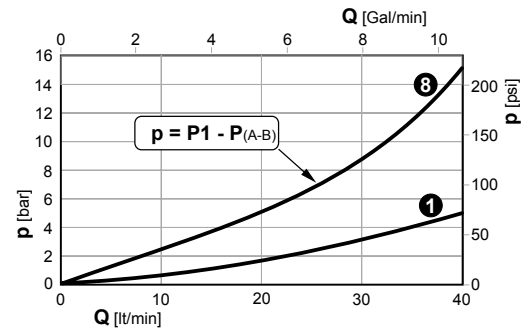
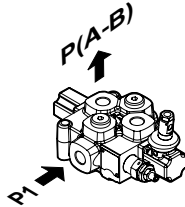
Mono-Block Directional Control Valve



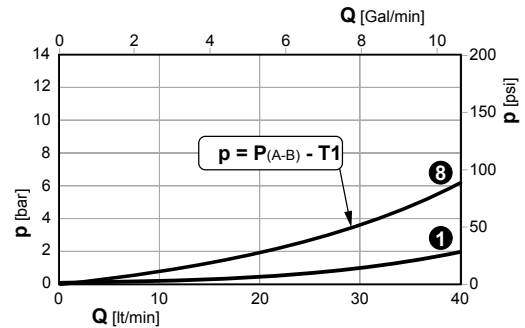
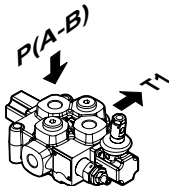
Pressure drop with spool in neutral position
(Δp depending on the number of the crossed sections)



Pressure drop with spool in working position
(Δp depending on the number of the crossed sections)

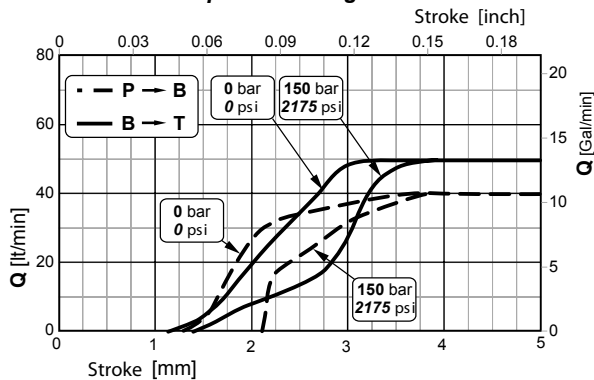


Pressure drop with spool in working position
(Δp depending on the number of the crossed sections)

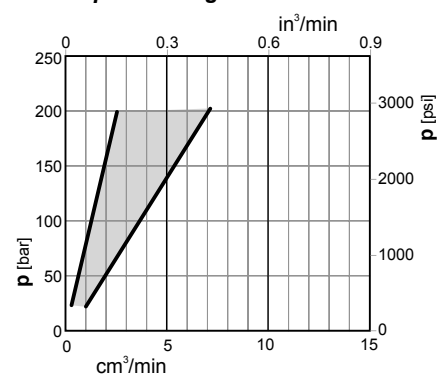


1 8 Sections

Spool metering



Spool leakage



NOTE: Performance curves measured using spool 103 type .