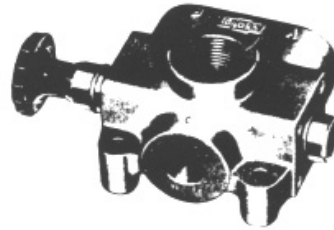


# VS Series

Hydraulic Selector Valve



The CROSS series VS hydraulic selector valves are manually operated, spool type, 3-way, 2-position valves featuring cast-in metering notches for smooth operation. They provide an economical method of diverting flow to either of two hydraulic circuits and are available with a variety of actuators.

## GENERAL SPECIFICATIONS

Maximum working pressure .....	2500 psi (172 bar)
Maximum shock and surge pressure .....	3500 psi (242 bar)
Maximum flow capacity .....	VS2: 20 gpm (76 ltr/min) VS4: 40 gpm (151 l/min)
Mounting .....	2 bolt, any position
Shipping Weight: .....	VS2: 2.7 lbs (1.2 kg); VS4: 6 lbs (2.7 kg)

## MATERIAL SPECIFICATIONS

Body .....	High tensile strength cast iron
Spool .....	Ground, plated and polished steel alloy
Seals .....	Buna N

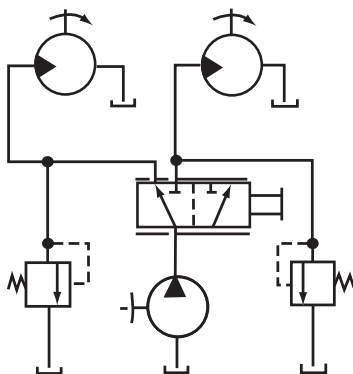
## STANDARD FEATURES

- 3/4 - 16 (1/2" SAE #8) ports on VS2
- 1-1/16" - 12 (3/4" SAE #12) ports on VS4
- Knob actuator (at port 'B')
- Front inlet port position

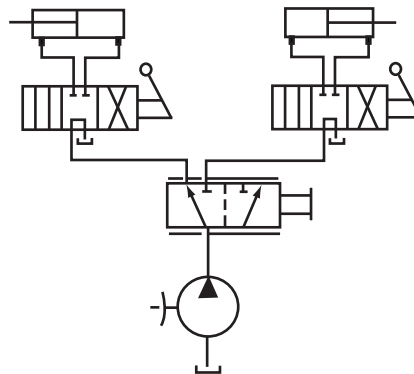
## OPTIONAL FEATURES AVAILABLE

- Various port sizes and types
- Bottom inlet port location
- Detent
- Spring Return
- Various actuators

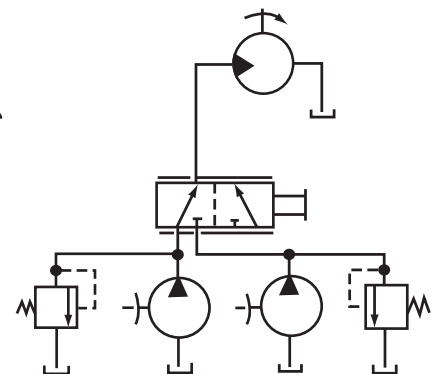
## TYPICAL APPLICATION (Simplified circuits)



**CIRCUIT SELECTOR**  
Allows either motor to be driven uni-directionally.



**CIRCUIT SELECTOR**  
Allows either cylinder to be operated independently from single pump.



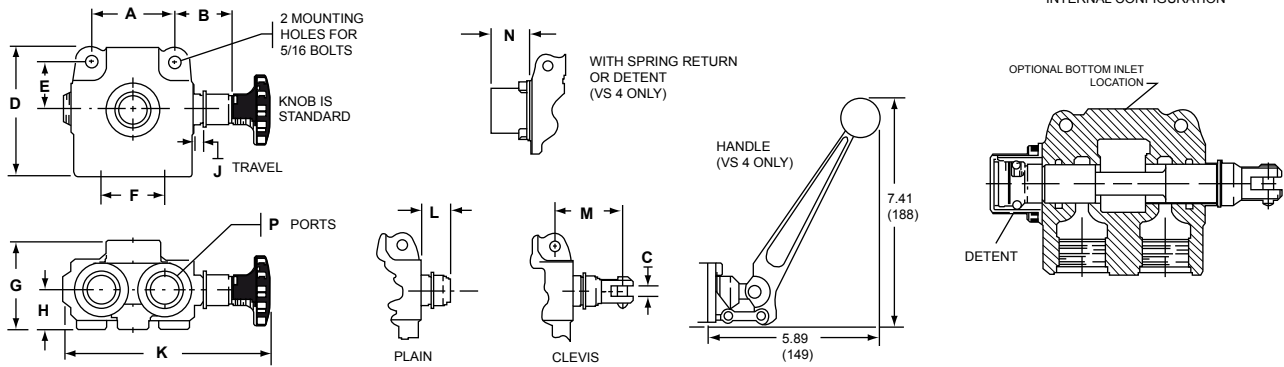
**INPUT SELECTOR**  
Allows motor to be driven from either of two input sources.

# VS Series

Hydraulic Selector Valve

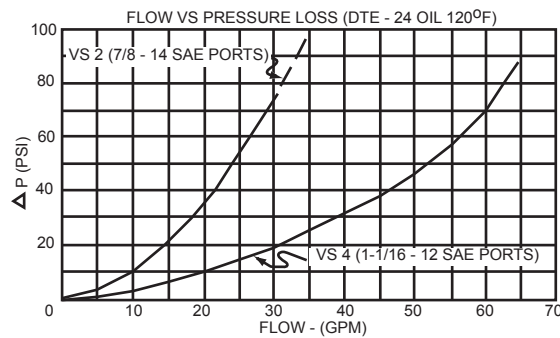


## DIMENSIONAL DATA: in inches and (millimetres)



MODEL	A	B	C	D	E	F	G	H	J	K	L	M	N	P	
<b>VS2</b>	in.	2.12	1.53	.34	3.25	1.19	1.62	2.25	1.00	.31	5.33	1.03	2.16	1.18	3/4 16 SAE #8
	mm	54	39	836	82	30	41	57	25.4	7.9	135	26	55	30	
<b>VS4</b>	in.	3.00	1.56	.34	4.12	1.50	2.12	2.62	1.12	.38	6.12	1.00	2.19	1.18	1-1/16 12 SAE #12
	mm	76	40	8.6	105	38	54	66	28	9.6	155	25.4	56	30	

## PERFORMANCE DATA: (Typical)



## ORDERING INFORMATION

SERIES	MODEL	ACTUATOR LOCATION	ACTUATOR OPTIONS	END CAP OPTIONS	INLET PORT (C) LOCATION	PORT SIZE (ALL)	
						VS2	VS4
VS	2 20 gpm	A port 'A' side	K* Knob	L* Plain	F Front position	2 1/2" NPTF	6 3/4" NPTF
	4 40 gpm	B* port 'B' side	C Clevis		B Bottom position	4* SAE #8 (3/4 - 16)	8* SAE #12 (1-1/16 - 12)
			L Plain		A Both pos. mach.	9 SAE #16 (1-5/16 - 12)	
				VS4 only	VS4 only		
				A - Handle U - Hydraulic Pilot G - Other, specify	B - Spring return D - 2 pos. detent U - Hydraulic pilot G - Other, specify		

\*Standard

Example: Model VS4BKL8 is a standard 40 gpm valve with knob actuator located at the 'B' port side with SAE #12 (1-1/16 - 12) o-ring ports.