

VS 280F Series

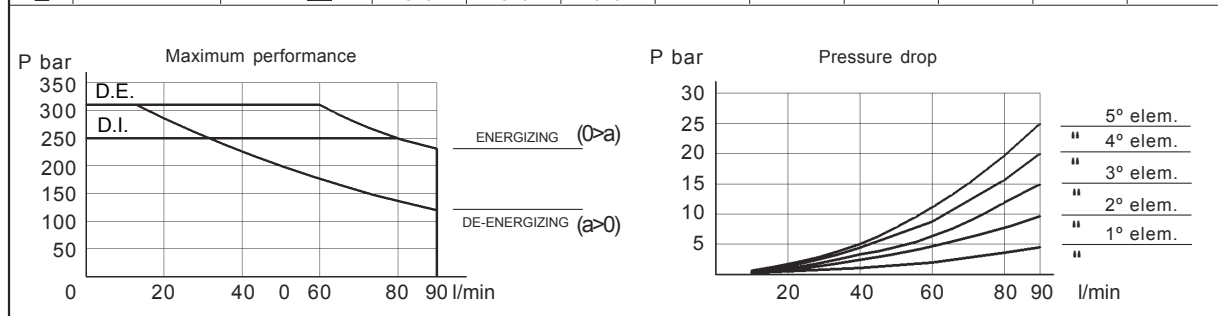
Solenoid Operated Selector Valves



Max flow	90 l/min	Code	L 7 4 5 U J W V * Y Z
Max pressure	310 bar		
Ports	1/2" G-SAE10 M18x1,5	Model	VS281/5/6F
Description: 6 way bankable flow diverters			

CIRCUIT					
Code	Circuit	* Transit position	Code	Circuit	* Transit position
W			W		
6B			6G		
6D			6H		
6E					

TECHNICAL FEATURES									
V	Drain	Circuit	Spool types						Pressure max bar
			6B	6D	6E	6G	6H		
I	Int. D.I.		250	250	250	310	310		
E	Ext. D.E.		310	310	310	-	-		



Internal leakage on C ports	MIN	MAX	Mineral oil with 32 cSt viscosity, at 40°C and 100 bar pressure.
	cm ³ /min	cm ³ /min	
	10	30	

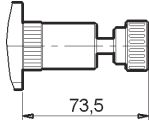
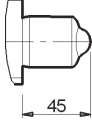
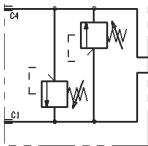
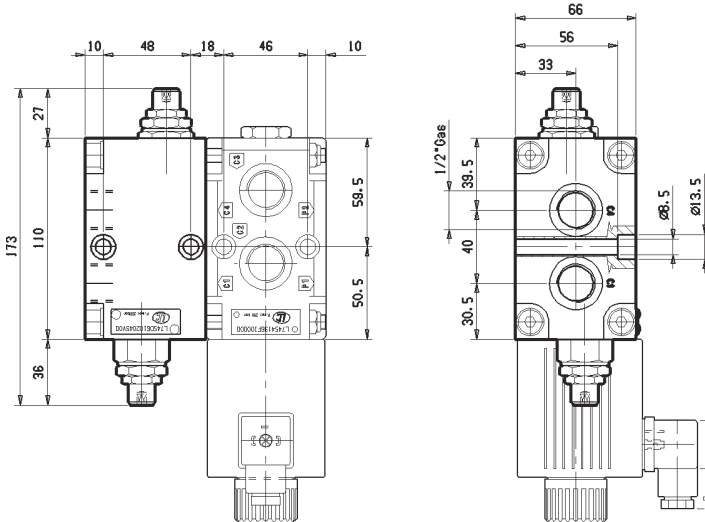
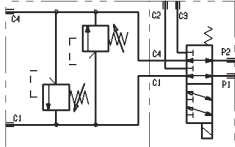
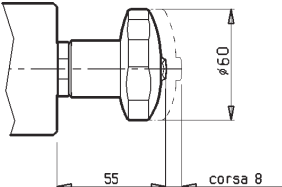
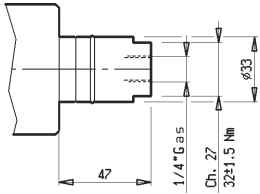
OVER-ALL DIMENSIONS			
U	Ports (D)	Ports (E)	Model
4	1/2" Gas	1/4" Gas	VS281F
D	SAE 10	SAE 4	VS285F
Y	M18x1,5	-	VS286F
Weight		4.15 kg	

Dimensions shown in drawings:
 - Overall height: 100.5 mm
 - Solenoid height: 110 mm
 - Port spacing: 99.5 mm, 66 mm, 33 mm
 - Solenoid diameter: 41.5 mm
 - Port diameter: 30.5 mm, 40 mm, 38.5 mm
 - Solenoid width: 56 mm, 33 mm
 - Port diameter: 3.5 mm, 17 mm, 227.5 mm

VS 280F Series

Solenoid Operated Selector Valves



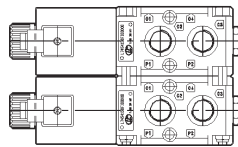
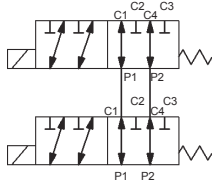
MAXIMUM BLOCKING TORQUES							
Tube ch. 19mm: 25÷ 27Nm		Retainer nut 7÷8Nm		Fixing screws DIN 912-8.8 M8x65: 15÷ 16Nm			
OPTIONS							
J	Screwed manual override EF Reference: LC2DZEF			J	Push-button manual override EP Reference: 281-0010		
_F				_P			
	73,5			45			
MODULAR ELEMENTS							
CIRCUIT		Ports (D)	Code	Description			
		1/2" Gas	L7404610214SV00	Modular element with cross pressure limiting valves on C1-C4.			
		SAE10	L740D610214SV00				
							
Weight	1.40 kg						
P. max bar	Q l/min	Cartridge					
250	70	VMD1.070.SV	EXAMPLE				
OTHER ACTUATORS							
J	X	Push-turn manual actuator Ref.: 26-0243000	J	X	Oleopneumatic actuator OP Reference: VS281P	Pilot pressure	
H1	SG		P1	00		P. Max 200bar	P. Min 4bar*
						* With external drain (DE).	
55		corsa 8		47		<p>With internal drain (DI), allow for pilot ratio 6,5:1. Example: at 100 bar pressure (C1,C2,C3,C4), will need a minimum pilot pressure of 100:6,5 = 15,4 bar.</p>	

VS 280F Series

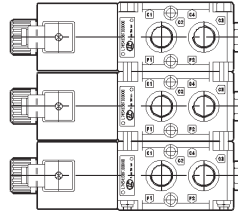
Solenoid Operated Selector Valves



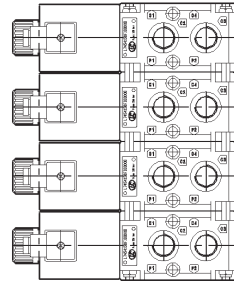
TYPES OF MOUNTING



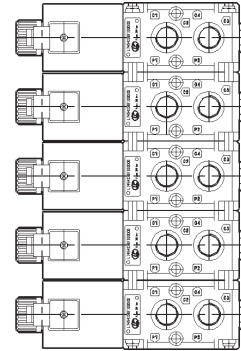
8 way



10 way



12 way



14 way

Model	Port number	L mm	Screws - Tie rods	Maximum blocking torque Nm
VS 281/5/6F-2	8	132	M8x125 (v)	17 Nm
VS 281/5/6F-3	10	198	M8x190 (v)	17 Nm
VS 281/5/6F-4	12	264	M8x270 (t)	17 Nm
VS 281/5/6F-5	14	330	M8x330 (t)	17 Nm

ORDERING CODE

L 7 4 5 U J W V * Y Z

U	PORTS
—	SEE PAGE 2.165
V	DRAIN
—	SEE PAGE 2.165
W	CIRCUIT
—	SEE PAGE 2.165

J	OPERATED
13	ELECTRICALLY OPERATED (DZ)
1F	ELECTRICALLY OPERATED + EF
1P	ELECTRICALLY OPERATED + EP
P1	OLEOPNEUMATICALLY OPERATED (OP)
H1	MANUALLY OPERATED (MN)

Z	VERSION
0	SINGLE ELEMENT
2	2 FLANGED ELEMENTS
3	3 FLANGED ELEMENTS
4	4 FLANGED ELEMENTS
5	5 FLANGED ELEMENTS

Y	CONNECTION
00	WITHOUT COIL AND CONNECTOR
01	WITH COIL, WITHOUT CONNECTOR
02	WITH CONNECTOR DIN 43650
03	AMP JUNIOR
07	DT04-2P DEUTSCH
31	CABLE 350 mm
34	CABLE 350 mm + DT04-2P DEUTSCH

X	VOLTAGE	Available connections					
		00	01	03	07	31	34
00	WITHOUT COIL						
OB	12V DC	X	X	X	X	X	X
AD	13V DC	X	X		X		
OC	24V DC	X	X	X	X	X	X
AC	27V DC	X	X		X		
OD	48V DC	X	X				
OV	24 RAC (21.5 DC)	X	X				
OW	110 RAC (98 DC)	X	X				
OZ	230 RAC (207 DC)	X	X				

VS 280F Series



Coils

COILS C65

J

14

4

Weight: 1,050 kg - Insulation Class: H - Working Duty: ED 100% only if the room temperature does not exceed 40°C.

Inlet voltage: should not exceed +5% / -10% of the nominal value.

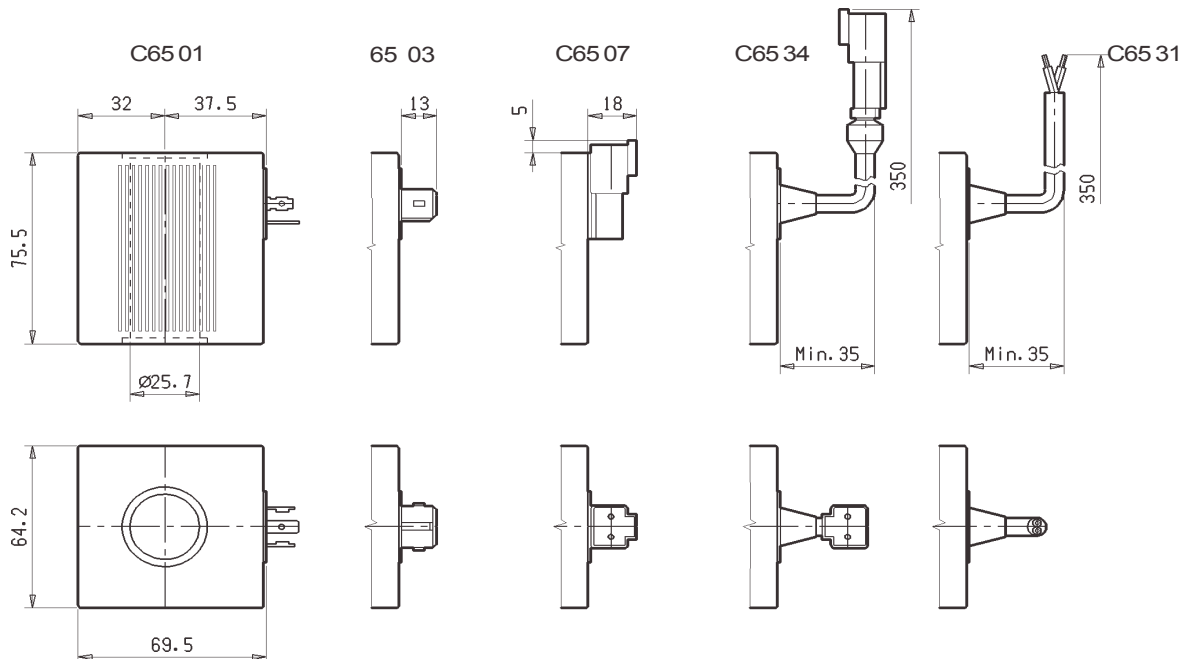
Available voltages: Look at table. On request different voltages can be supplied.

Low voltage: conforms to the 73/23/CEE and 89/336/CEE directives. Standard connections: DIN 43650-ISO 4400.

Versions with sheathed cables as well as with Deutsch and AMP JUNIOR connector are equipped with bi-directional diode.

Protection Class according to DIN 40050: only if the coil is assembled correctly with O'ring and retainer:

- IP65 with DIN 43650 connector, only if it is assembled with rubber sealings and the fixing screw is properly tightened.
- IP69k for versions with Deutsch connector.



Reference	Model	Connection	Nominal voltage volt	Marking	Power watt	Nominal current ampere	Resistance	
							#	± 7% T=20°C
281-0617	C6501 12DC	DIN 43650 - ISO 4400	12 DC	12 VDC	44	3.60	3.2	
281-06190	C6531 12DC	CABLES	12 DC	12 VDC	44	3.60	3.2	
281-0631	C6503 12DC	AMP JUNIOR	12 DC	12 VDC	44	3.60	3.2	
281-06191	C6534 12DC	CABLE + DEUTSCH	12 DC	12 VDC	44	3.60	3.2	
281-06194	C6507 12DC	DEUTSCH DT04-2P	12 DC	12 VDC	44	3.60	3.2	
281-061700	C6501 13DC	DIN 43650 - ISO 4400	13 DC	13 VDC	44	3.40	3.6	
281-06198	C6507 13DC	DEUTSCH DT04-2P	13 DC	13 VDC	44	3.40	3.9	
281-0618	C6501 24DC	DIN 43650 - ISO 4400	24 DC	24 VDC	44	1.80	12.8	
281-06195	C6531 24DC	CABLES	24 DC	24 VDC	44	1.80	12.8	
281-0632	C6503 24DC	AMP JUNIOR	24 DC	24 VDC	44	1.80	12.8	
281-06196	C6534 24DC	CABLE + DEUTSCH	24 DC	24 VDC	44	1.80	12.8	
281-06197	C6507 24DC	DEUTSCH DT04-2P	24 DC	24 VDC	44	1.80	12.8	
281-061800	C6501 27DC	DIN 43650 - ISO 4400	27 DC	27 VDC	44	1.60	16.9	
281-06199	C6507 27DC	DEUTSCH DT04-2P	27 DC	27 VDC	44	1.60	16.7	
281-0621	C6501 48DC	DIN 43650 - ISO 4400	48 DC	48 VDC	44	0.90	50.5	
281-0622	C6501 24 50 RAC	DIN 43650 - ISO 4400	21.5 DC	21.5 VDC	44	2.00	11	
281-0623	C6501 110 50 RAC	DIN 43650 - ISO 4400	98 DC	98 VDC	44	0.45	98	
281-0624	C6501 230 50 RAC	DIN 43650 - ISO 4400	207 DC	207 VDC	44	0.21	997	