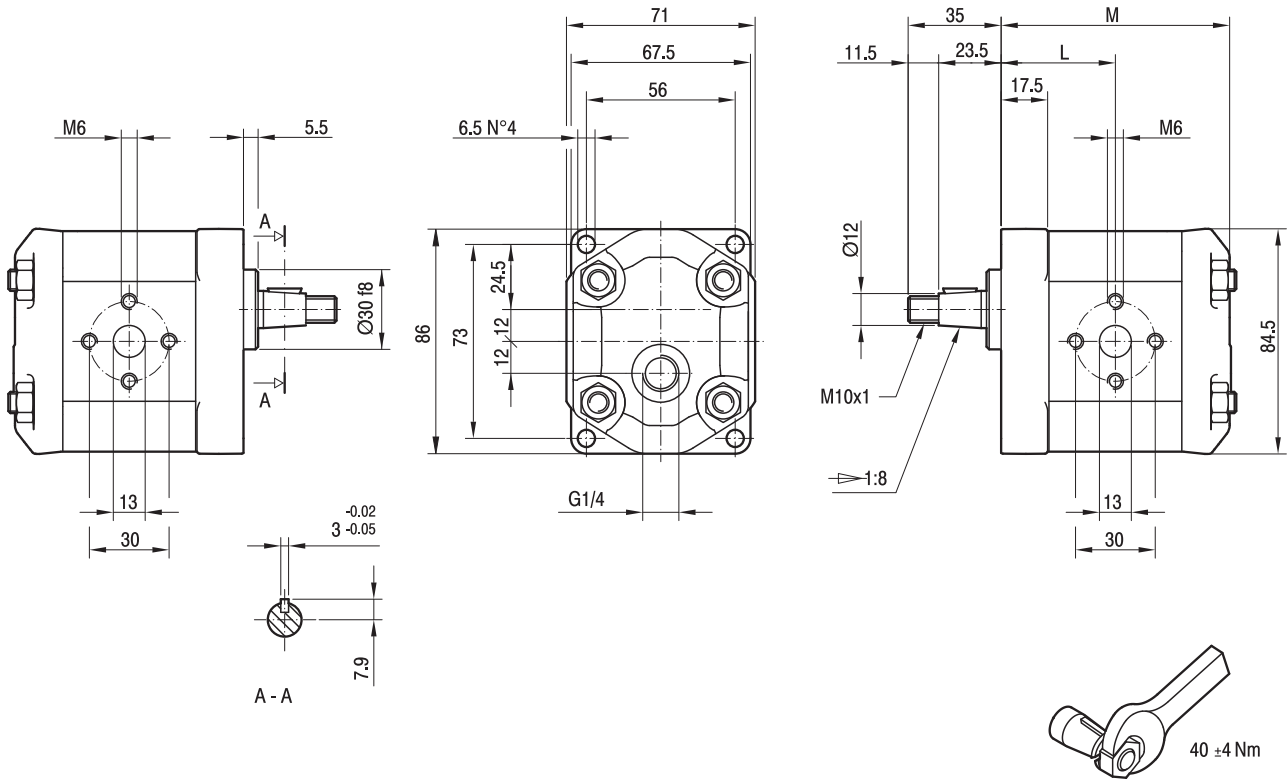


ALM1R Series

Gear Motors



DIMENSIONAL DETAILS



TYPE	DISPLACEMENT CM ³ /REV	FLOW AT 1500 REV/MIN	MAX. WORKING PRESSURE			MAX. SPEED RPM	DIMENSIONS MM	
			P1	P2	P3		L	M
ALM1R4FGE1	2.8	3.9	250	240	270	5000	42	84.5
ALM1R5FGE1	3.5	4.9	250	240	270	5000	43	86.5
ALM1R6FGE1	4.1	5.9	250	240	270	4000	44	88.5
ALM1R7FGE1	5.2	7.4	230	220	245	4000	45.5	91.5
ALM1R9FGE1	6.2	8.8	230	220	245	3800	47	94.5
ALM1R11FGE1	7.6	10.8	200	190	215	3200	49	98.5
ALM1R13GFE1	9.3	13.3	180	170	195	2600	51.5	103.5
ALM1R16FGE1	11.0	15.7	170	160	185	2200	54	108.5

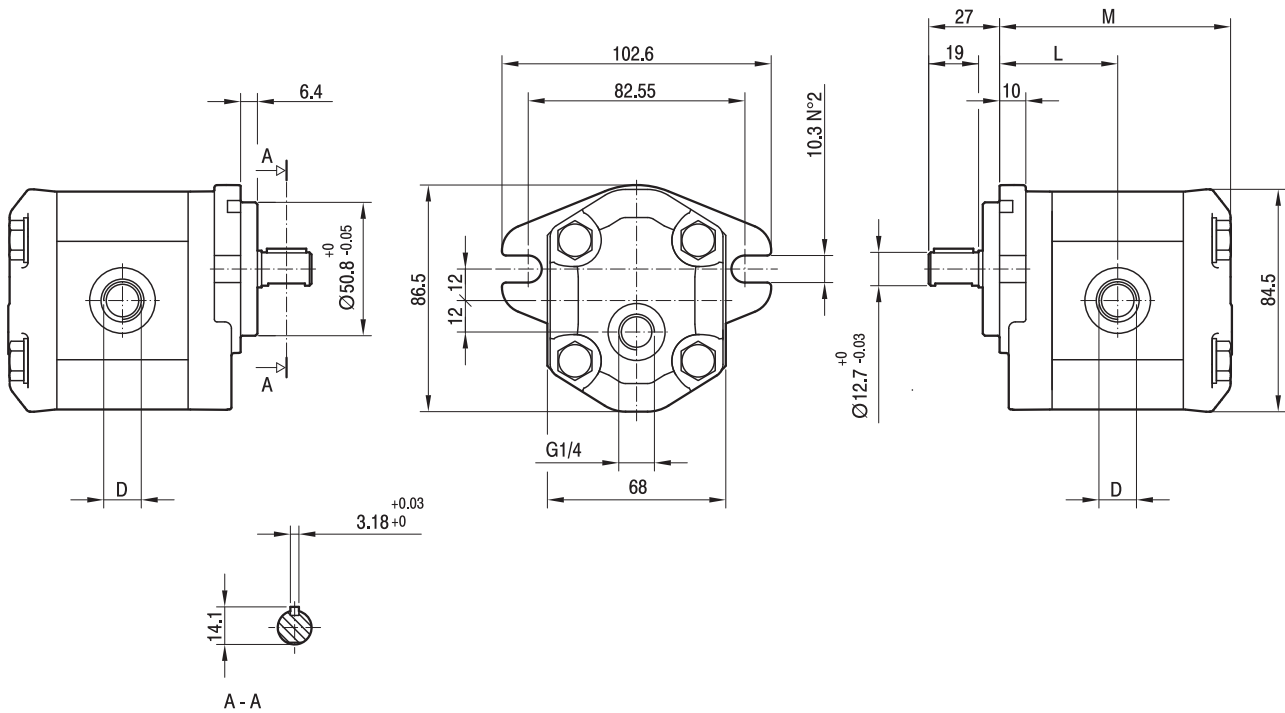
P1 = Continuous Operating Pressure
P2 = Intermittent Operating Pressure
P3 = Peak Pressure

ALM1A Series

Gear Motors



DIMENSIONAL DETAILS



TYPE	DIS-PLACEMENT CM ³ /REV	FLOW AT 1500 REV/MIN	MAX. WORKING PRESSURE			MAX. SPEED RPM	DIMENSIONS MM		
			P1	P2	P3		L	M	D
ALM1AR4C1	2.8	3.9	250	240	270	5000	44	86.5	3/4-16 UNF
ALM1AR5C1	3.5	4.9	250	240	270	5000	45	88.5	3/4-16 UNF
ALM1AR6C1	4.1	5.9	250	240	270	4000	46	90.5	3/4-16 UNF
ALM1AR7C1	5.2	7.4	230	220	245	3500	47.5	93.5	3/4-16 UNF
ALM1AR9C1	6.2	8.8	230	220	245	3000	49	96.5	3/4-16 UNF
ALM1AR11C1	7.6	10.8	200	190	215	3500	51	100.5	7/8-14 UNF
ALM1AR13C1	9.3	13.3	180	170	195	3000	53.5	105.5	7/8-14 UNF
ALM1AR16C1	11.0	15.7	170	160	185	2500	56	110.5	7/8-14 UNF

P1 = Continuous Operating Pressure
P2 = Intermittent Operating Pressure
P3 = Peak Pressure

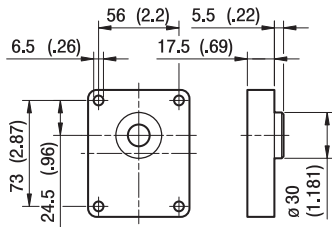
ALM1 Series

Gear Motors



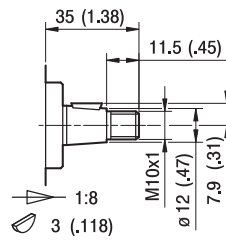
FLANGE & SHAFT DETAILS

FLANGES

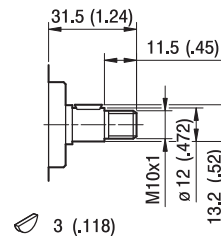


T0

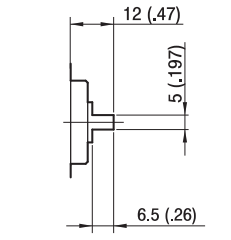
SHAFTS



C0



G0

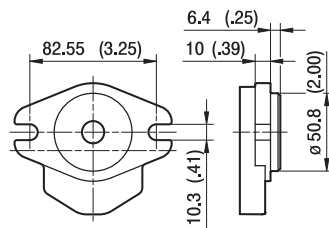


G0

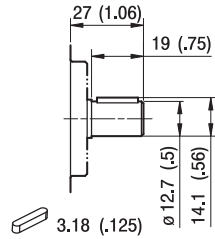
Max Torque 100 Nm

Max Torque 55 Nm

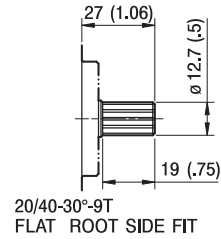
Max Torque 45 Nm



A



C1



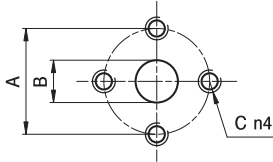
S1

Max Torque 60 Nm

Max Torque 100 Nm

PORT DETAILS

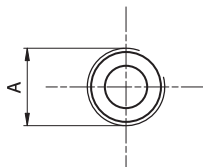
PORTS



E

TYPE	BI-DIRECTIONAL MOTOR			MONO-DIRECTIONAL MOTOR		
	OUTPUT - INPUT			INPUT		
	A	B	C	A	B	C
ALM1...4 ÷ ALM1...16	30	13	M6	30	13	M6

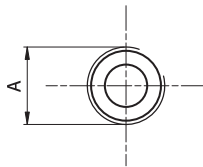
Tightening torques of the fittings screws are specified on page 46 (accessories section).



FG

TYPE	BI-DIRECTIONAL MOTOR	MONO-DIRECTIONAL MOTOR
	OUTPUT - INPUT	INPUT
	A	A
ALM1...4 ÷ ALM1...5	G1/2	G3/8
ALM1...6 ÷ ALM1...16	G1/ 2	G1/ 2

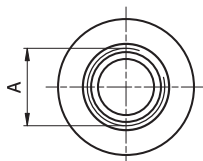
Tightening torques for G1/2 fitting: 50 Nm. Tightening torques for G3/8 fitting: 35 Nm. Please check with the fittings suppliers.



FC

TYPE	BI-DIRECTIONAL MOTOR	MONO-DIRECTIONAL MOTOR
	OUTPUT - INPUT	INPUT
	A	A
ALM1...4 ÷ ALM1...16	Rc1/ 2	Rc1/ 2

Tightening torques for Rc1/2 fitting: 50 Nm. Please check with the fittings suppliers.



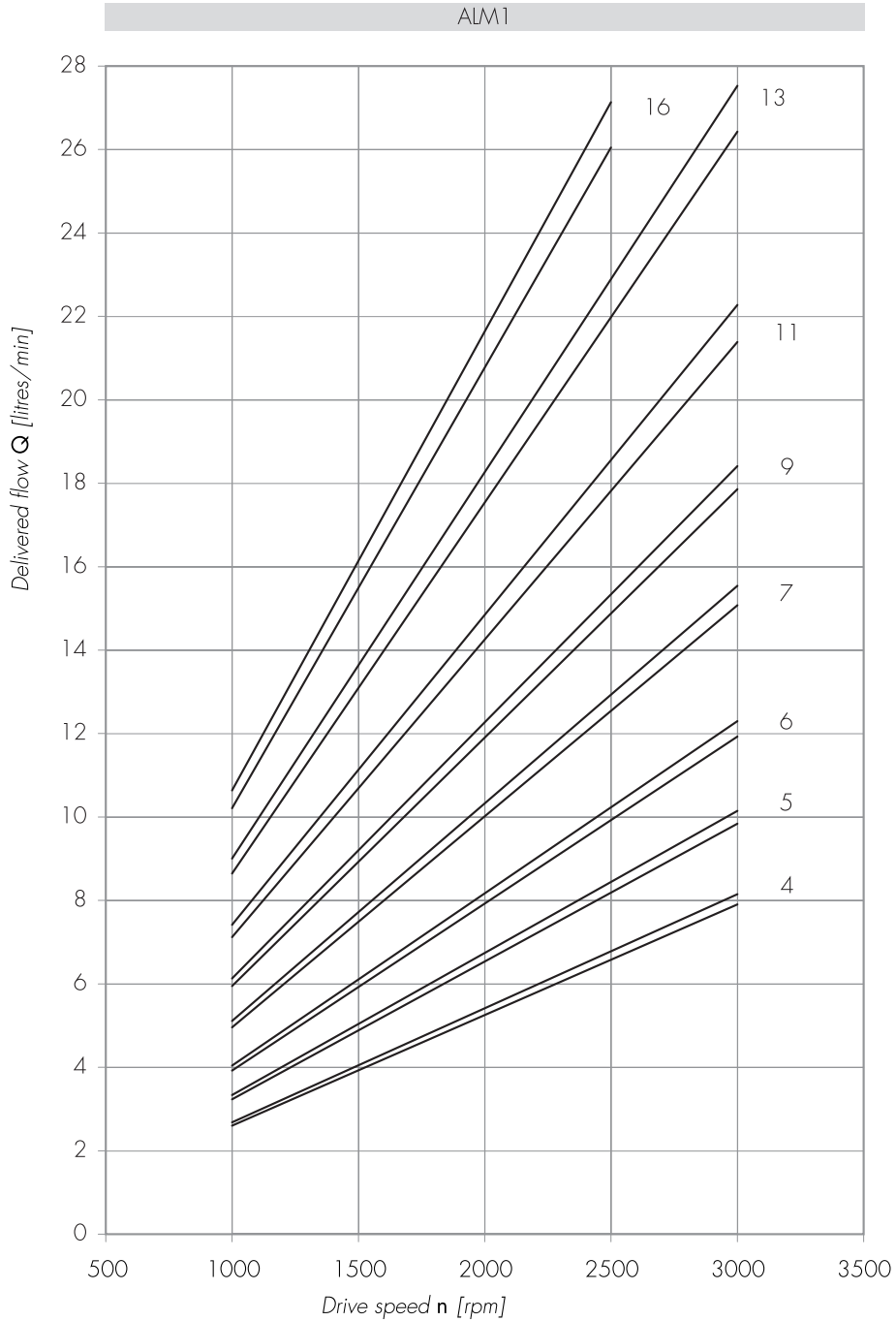
STANDARD SAE J1926/1

FA

TYPE	BI-DIRECTIONAL MOTOR	MONO-DIRECTIONAL MOTOR
	OUTPUT - INPUT	INPUT
	A	A
ALM1...4 ÷ ALM1...9	3/ 4-16 UNF	9/ 16-18 UNF
ALM1...11 ÷ ALM1...16	7/8-14 UNF	3/4-16 UNF

Tightening torques for 9/16-18 UNF fitting: 30 Nm. Tightening torques for 3/4-16 UNF fitting: 60 Nm. Tightening torques for 7/8-14 UNF fitting: 70 Nm. Please check with the fittings suppliers.

ALM1 PERFORMANCE CURVES



Each curve has been obtained at 50°C, using oil with viscosity 30 cSt at these pressure.

4 | 25-240 bar
5 |

9 | 25-220 bar

13 | 25-170 bar

6 | 25-230 bar
7 |

11 | 25-180 bar

16 | 25-150 bar

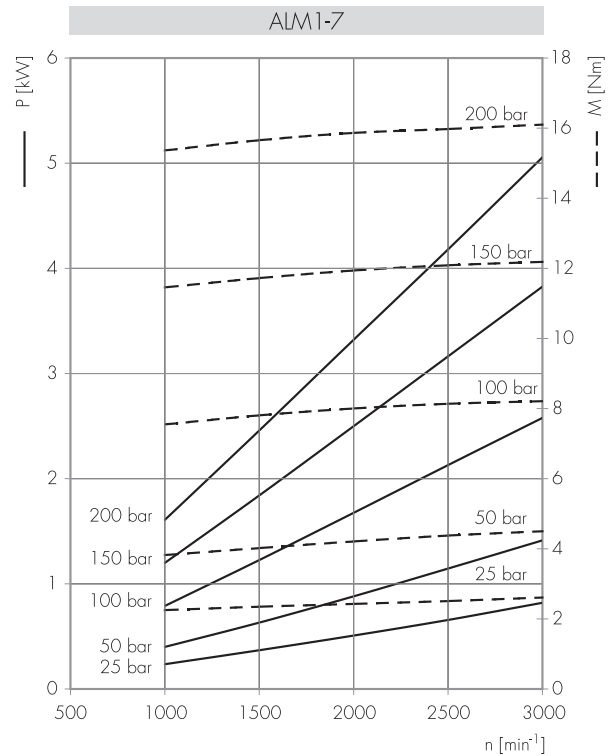
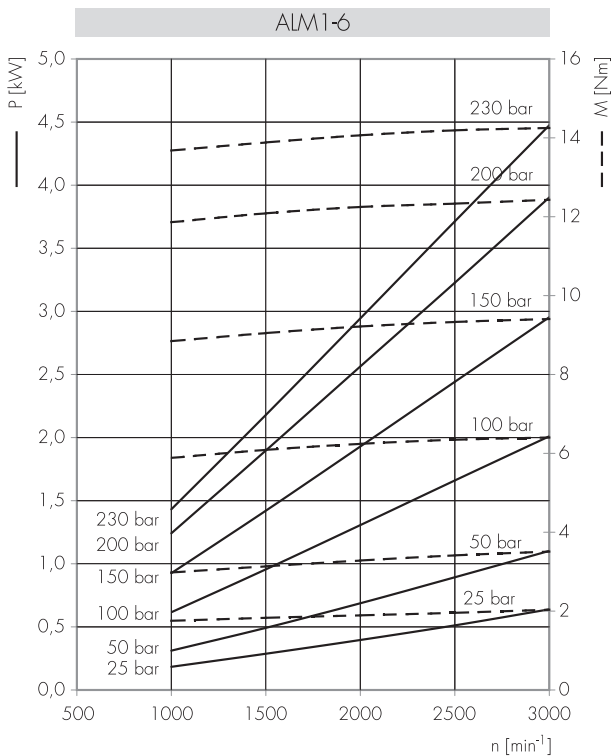
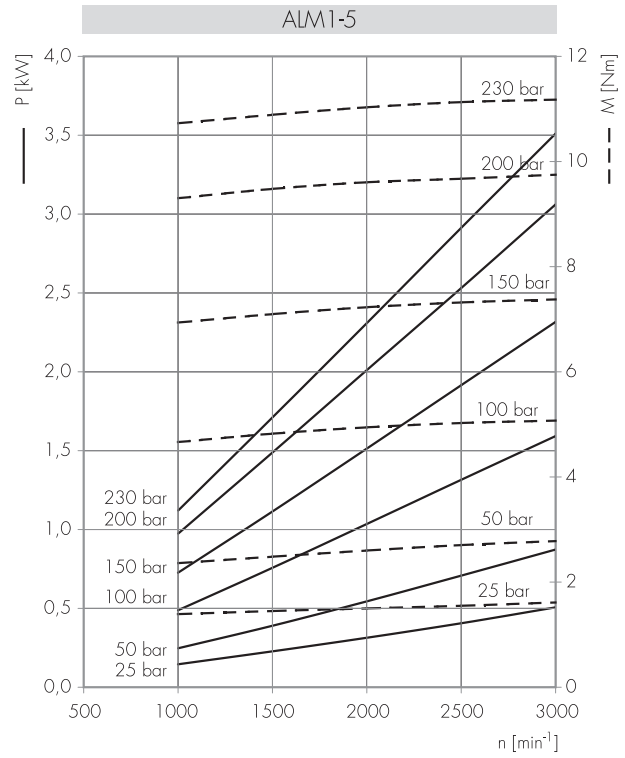
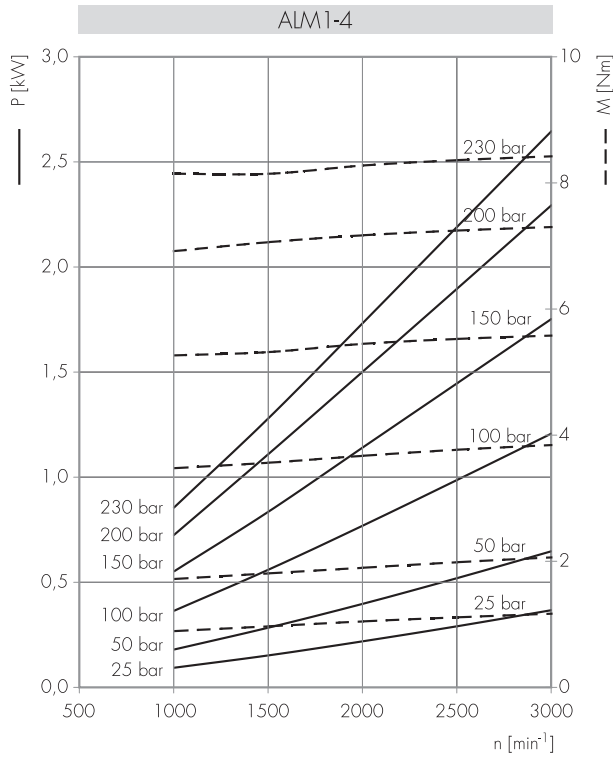
ALM1 Series

Gear Motors



TYPICAL PERFORMANCE DATA

Delivered power P [kW]
 Delivered torque M [Nm]
 Drive speed n [rpm]



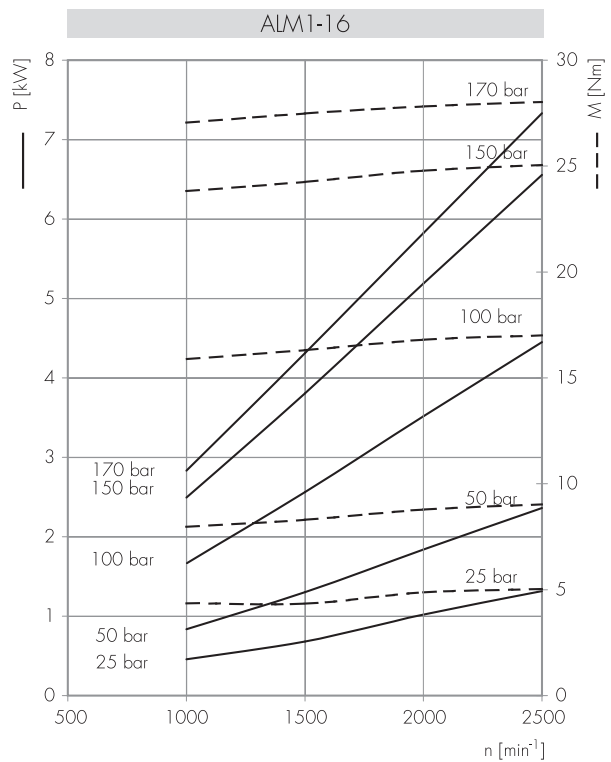
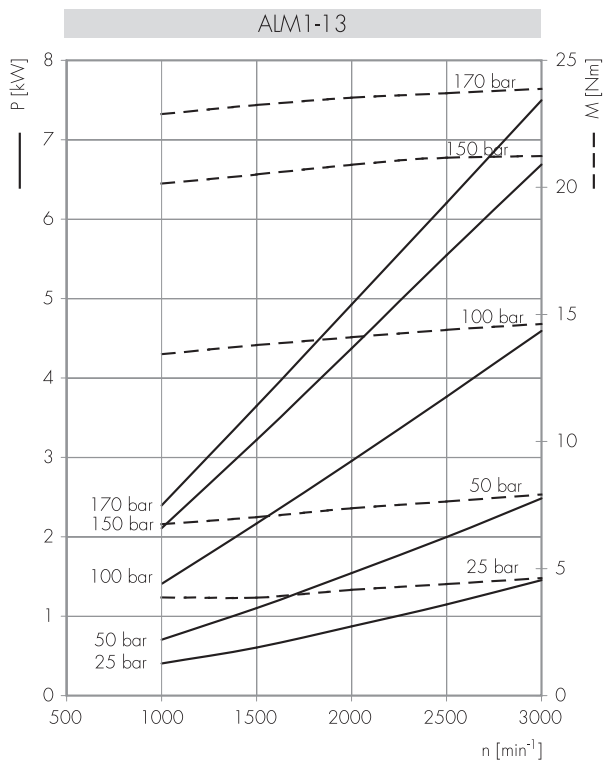
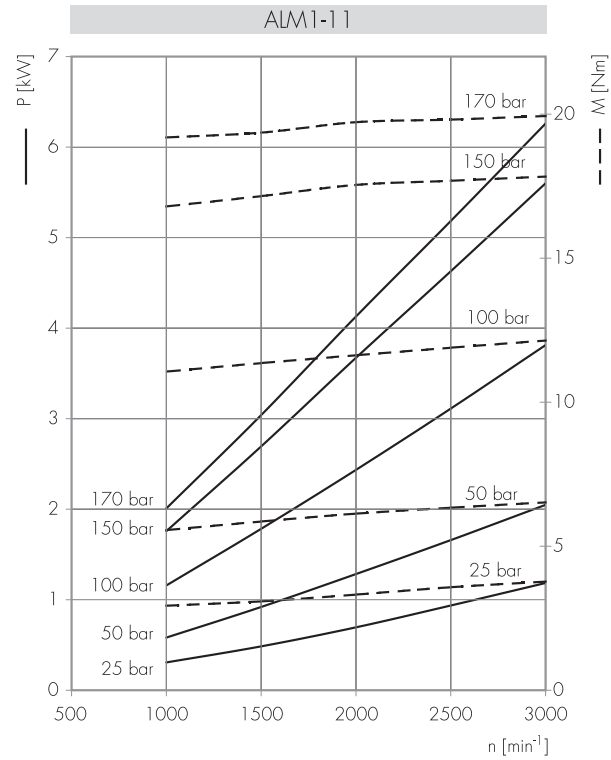
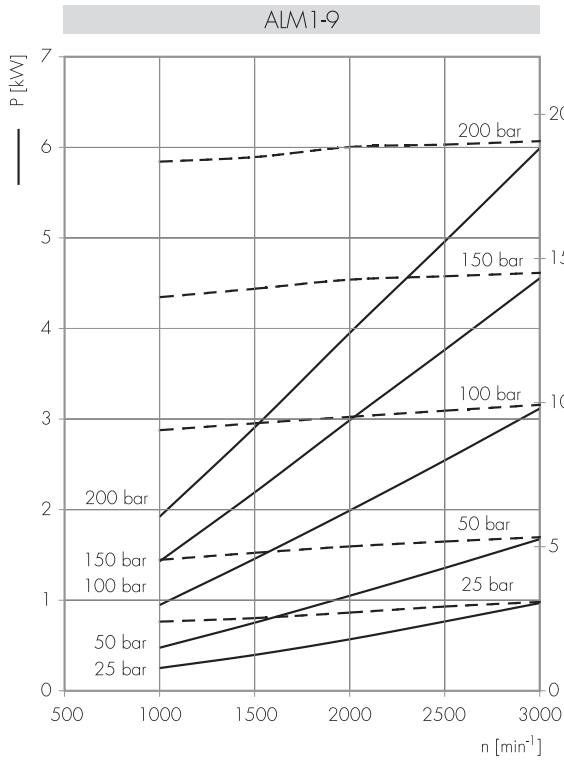
ALM1 Series

Gear Motors



TYPICAL PERFORMANCE DATA

Delivered power P [kW]
 Delivered torque M [Nm]
 Drive speed n [rpm]

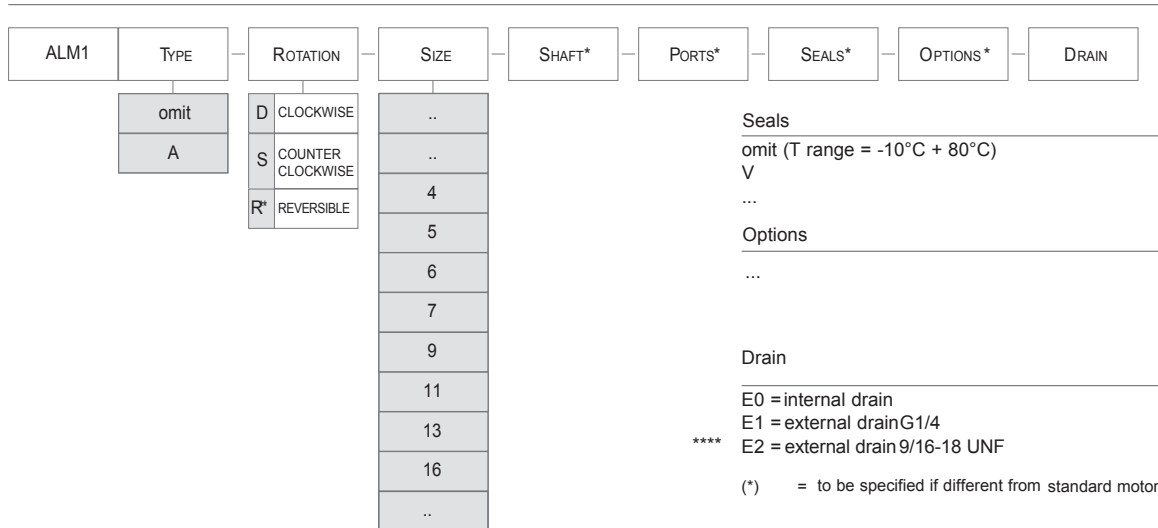


ALM1 Series

Gear Motors



HOW TO ORDER



Seals
omit (T range = -10°C + 80°C)
V
...

Options
...

Drain
E0 = internal drain
E1 = external drain G1/4
**** E2 = external drain 9/16-18 UNF

(*) = to be specified if different from standard motor type

(**) = only for R rotation

(***) = E2 Drain port is machined in compliance with threaded port with O-ring seal in truncated housing SAE J1926/1 (ISO 11926-1). Thread depth 12.7mm.

Motor Standard Types

omit = european flange + shaft T0 + ports E + standard seals
A = flange A + shaft C1 + ports FA + standard seals